


Anti-TDP1 antibody ab4166

★★★★★ 6 Abreviews 26 References 画像数 2

製品の概要

| | |
|----------|---|
| 製品名 | Anti-TDP1 antibody |
| 製品の詳細 | Rabbit polyclonal to TDP1 |
| 由来種 | Rabbit |
| アプリケーション | 適用あり: WB |
| 種交差性 | 交差種: Human, Recombinant fragment 交差が予測される動物種: Mouse, Rat  |
| 免疫原 | Synthetic peptide. This information is proprietary to Abcam and/or its suppliers. |
| 特記事項 | <p>The Life Science industry has been in the grips of a reproducibility crisis for a number of years. Abcam is leading the way in addressing this with our range of recombinant monoclonal antibodies and knockout edited cell lines for gold-standard validation. Please check that this product meets your needs before purchasing.</p> <p>If you have any questions, special requirements or concerns, please send us an inquiry and/or contact our Support team ahead of purchase. Recommended alternatives for this product can be found below, along with publications, customer reviews and Q&As</p> |

製品の特性

| | |
|--------|--|
| 製品の状態 | Liquid |
| 保存方法 | Shipped at 4°C. Store at +4°C short term (1-2 weeks). Upon delivery aliquot. Store at -20°C or -80°C. Avoid freeze / thaw cycle. |
| バッファー | <p>pH: 7.40</p> <p>Preservative: 0.02% Sodium azide</p> <p>Constituent: PBS</p> <p>Batches of this product that have a concentration < 1mg/ml may have BSA added as a stabilising agent. If you would like information about the formulation of a specific lot, please contact our scientific support team who will be happy to help.</p> |
| 精製度 | Immunogen affinity purified |
| ポリ/モノ | ポリクローナル |
| アイソタイプ | IgG |

アプリケーション

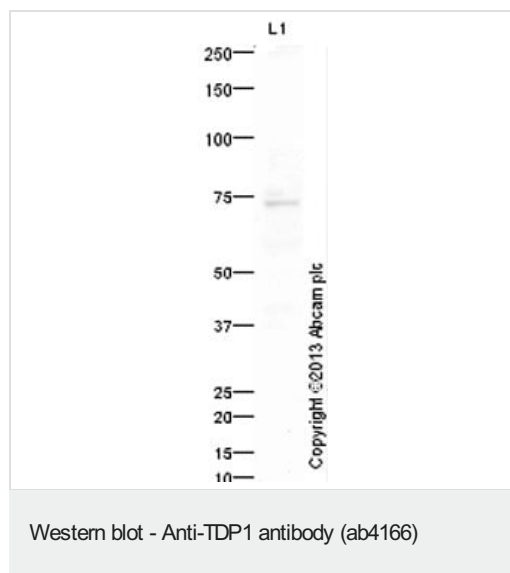
The Abpromise guarantee **Abpromise保証は、次のテスト済みアプリケーションにおけるab4166の使用に適用されます**
アプリケーションノートには、推奨の開始希釈率がありますが、適切な希釈率につきましてはご確認ください。

| アプリケーション | Abreviews | 特記事項 |
|----------|-----------|---|
| WB | ★★★★★ (3) | Use a concentration of 1 µg/ml. Detects a band of approximately 75 kDa (predicted molecular weight: 68 kDa). Abcam recommends blocking with 1-3% Milk. |

ターゲット情報

| | |
|-------|---|
| 機能 | DNA repair enzyme that can remove a variety of covalent adducts from DNA through hydrolysis of a 3'-phosphodiester bond, giving rise to DNA with a free 3' phosphate. Catalyzes the hydrolysis of dead-end complexes between DNA and the topoisomerase I active site tyrosine residue. Hydrolyzes 3'-phosphoglycolates on protruding 3' ends on DNA double-strand breaks due to DNA damage by radiation and free radicals. Acts on blunt-ended double-strand DNA breaks and on single-stranded DNA. Has low 3'exonuclease activity and can remove a single nucleoside from the 3'end of DNA and RNA molecules with 3'hydroxyl groups. Has no exonuclease activity towards DNA or RNA with a 3'phosphate. |
| 組織特異性 | Ubiquitously expressed. Similar expression throughout the central nervous system (whole brain, amygdala, caudate nucleus, cerebellum, cerebral cortex, frontal lobe, hippocampus, medulla oblongata, occipital lobe, putamen, substantia nigra, temporal lobe, thalamus, nucleus accumbens and spinal cord) and increased expression in testis and thymus. |
| 関連疾患 | Spinocerebellar ataxia, autosomal recessive, with axonal neuropathy |
| 配列類似性 | Belongs to the tyrosyl-DNA phosphodiesterase family. |
| 翻訳後修飾 | Phosphorylated on serine and/or threonine residues, but not on tyrosine residues. |
| 細胞内局在 | Nucleus. Cytoplasm. |

画像



Anti-TDP1 antibody (ab4166) at 1 µg/ml (blocked with 3% milk) +
Jurkat nuclear extract lysate (**ab14844**) at 20 µg

Secondary

Goat Anti-Rabbit IgG H&L (HRP) (**ab97051**) at 1/10000 dilution

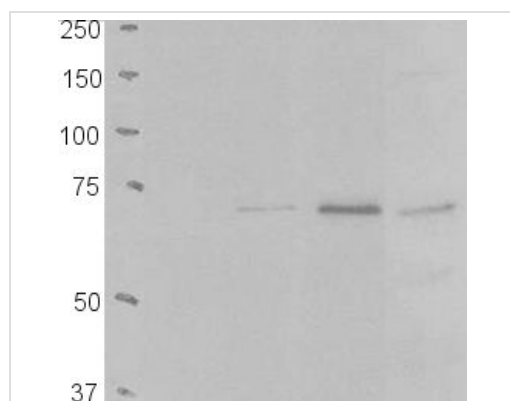
Developed using the ECL technique.

Performed under reducing conditions.

Predicted band size: 68 kDa

Observed band size: 75 kDa

Exposure time: 4 minutes



Western blot - Anti-TDP1 antibody (ab4166)

This image is courtesy of Keith Caldecott, University of Sussex

Lane 1 : Molecular weight markers

Lanes 2-5 : Anti-TDP1 antibody (ab4166) at 1/1000 dilution

Lane 2 : 1 ng purified recombinant human TDP1

Lane 3 : 3 ng purified recombinant human TDP1

Lane 4 : 6 ng purified recombinant human TDP1

Lane 5 : 6 micrograms total protein from MCF7 human cell extract

Developed using the ECL technique.

Performed under reducing conditions.

Predicted band size: 68 kDa

Observed band size: 68 kDa

ab4166 was incubated for 1 hr at room temp.

Please note: All products are "FOR RESEARCH USE ONLY. NOT FOR USE IN DIAGNOSTIC PROCEDURES"

Our Abpromise to you: Quality guaranteed and expert technical support

- Replacement or refund for products not performing as stated on the datasheet
- Valid for 12 months from date of delivery
- Response to your inquiry within 24 hours
- We provide support in Chinese, English, French, German, Japanese and Spanish
- Extensive multi-media technical resources to help you
- We investigate all quality concerns to ensure our products perform to the highest standards

If the product does not perform as described on this datasheet, we will offer a refund or replacement. For full details of the Abpromise, please visit <https://www.abcam.co.jp/abpromise> or contact our technical team.

Terms and conditions

- Guarantee only valid for products bought direct from Abcam or one of our authorized distributors