

Anti-TCR alpha antibody ab18861

★★★★ 4 Abbreviations 4 References 画像数 1

医薬用外劇物

製品の概要

| | |
|----------|--|
| 製品名 | Anti-TCR alpha antibody |
| 製品の詳細 | Rabbit polyclonal to TCR alpha |
| 由来種 | Rabbit |
| アプリケーション | 適用あり: WB |
| 種交差性 | 交差種: Human |
| 免疫原 | Recombinant full length protein (Human) |
| 特記事項 | <p>This product is manufactured by BioVision, an Abcam company and was previously called 5648 TCR alpha Antibody. 5648-100 is the same size as the 100 µg size of ab18861.</p> <p>The Life Science industry has been in the grips of a reproducibility crisis for a number of years. Abcam is leading the way in addressing this with our range of recombinant monoclonal antibodies and knockout edited cell lines for gold-standard validation. Please check that this product meets your needs before purchasing.</p> <p>If you have any questions, special requirements or concerns, please send us an inquiry and/or contact our Support team ahead of purchase. Recommended alternatives for this product can be found below, along with publications, customer reviews and Q&As</p> |

製品の特性

| | |
|--------|---|
| 製品の状態 | Liquid |
| 保存方法 | Shipped at 4°C. Upon delivery aliquot and store at -20°C or -80°C. Avoid repeated freeze / thaw cycles. |
| バッファー | Preservative: 0.02% Thimerosal (merthiolate) Constituents: PBS, 50% Glycerol (glycerin, glycerine), 1% BSA |
| 精製度 | Immunogen affinity purified |
| ポリ/モノ | ポリクローナル |
| アイソタイプ | IgG |

アプリケーション

The Abpromise guarantee

Abpromise保証は、次のテスト済みアプリケーションにおけるab18861の使用に適用されます

アプリケーションノートには、推奨の開始希釈率がありますが、適切な希釈率につきましてはご確認ください。

| アプリケーション | Abreviews | 特記事項 |
|----------|-----------|--|
| WB | ★★★★★ (2) | Use a concentration of 1 - 4 µg/ml. Detects a band of approximately 21 kDa (predicted molecular weight: 16 kDa). |

ターゲット情報

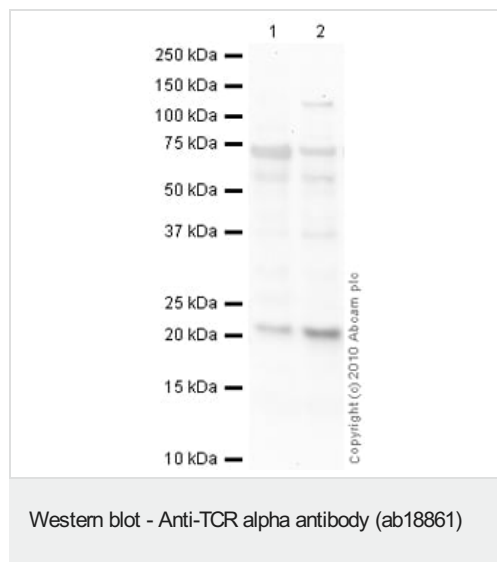
関連性

TCR (T cell antigen receptor) recognizes foreign antigens and translates such recognition events into intracellular signals that elicit a change in the cell from a dormant to an activated state. TCR is a heterodimer composed of either alpha and beta or gamma and delta chains. CD3 chains and the CD4 or CD8 coreceptors are also required for efficient signal transduction through the TCR.

細胞内局在

Plasma membrane

画像



All lanes : Anti-TCR alpha antibody (ab18861) at 1 µg/ml

Lane 1 : Human thymus tissue lysate - total protein ([ab30146](#))

Lane 2 : Human spleen tissue lysate - total protein ([ab29699](#))

Lysates/proteins at 10 µg per lane.

Secondary

All lanes : Goat Anti-Rabbit IgG H&L (HRP) preadsorbed ([ab97080](#)) at 1/5000 dilution

Developed using the ECL technique.

Performed under reducing conditions.

Predicted band size: 16 kDa

Observed band size: 21 kDa

Additional bands at: 56 kDa, 74 kDa. We are unsure as to the identity of these extra bands.

Exposure time: 90 seconds

TCR alpha contains a number of potential glycosylation sites (SwissProt) which may explain its migration at a higher molecular weight than predicted.

Please note: All products are "FOR RESEARCH USE ONLY. NOT FOR USE IN DIAGNOSTIC PROCEDURES"

Our Abpromise to you: Quality guaranteed and expert technical support

- Replacement or refund for products not performing as stated on the datasheet
- Valid for 12 months from date of delivery
- Response to your inquiry within 24 hours
- We provide support in Chinese, English, French, German, Japanese and Spanish
- Extensive multi-media technical resources to help you
- We investigate all quality concerns to ensure our products perform to the highest standards

If the product does not perform as described on this datasheet, we will offer a refund or replacement. For full details of the Abpromise, please visit <https://www.abcam.co.jp/abpromise> or contact our technical team.

Terms and conditions

- Guarantee only valid for products bought direct from Abcam or one of our authorized distributors