


Anti-TCP1 theta antibody ab96321

1 References [画像数 2](#)

医薬用外劇物

製品の概要

製品名	Anti-TCP1 theta antibody
製品の詳細	Rabbit polyclonal to TCP1 theta
由来種	Rabbit
アプリケーション	適用あり: WB, IHC-P
種交差性	交差種: Human 交差が予測される動物種: Mouse, Rat, Cow, Zebrafish 
免疫原	Recombinant fragment, corresponding to a region within internal sequence amino acids 111 - 337 of Human TCP1 theta.
特記事項	<p>The Life Science industry has been in the grips of a reproducibility crisis for a number of years. Abcam is leading the way in addressing this with our range of recombinant monoclonal antibodies and knockout edited cell lines for gold-standard validation. Please check that this product meets your needs before purchasing.</p> <p>If you have any questions, special requirements or concerns, please send us an inquiry and/or contact our Support team ahead of purchase. Recommended alternatives for this product can be found below, along with publications, customer reviews and Q&As</p>

製品の特性

製品の状態	Liquid
保存方法	Shipped at 4°C. Upon delivery aliquot and store at -20°C. Avoid repeated freeze / thaw cycles.
バッファー	pH: 7.00 Preservative: 0.01% Thimerosal (merthiolate) Constituents: 78.99% PBS, 1% BSA, 20% Glycerol (glycerin, glycerine)
精製度	Immunogen affinity purified
ポリ/モノ	ポリクローナル
アイソタイプ	IgG

アプリケーション

The Abpromise guarantee

Abpromise保証は、次のテスト済みアプリケーションにおけるab96321の使用に適用されます

アプリケーションノートには、推奨の開始希釈率がありますが、適切な希釈率につきましてはご確認ください。

アプリケーション	Abreviews	特記事項
WB		1/500 - 1/3000. Predicted molecular weight: 60 kDa.
IHC-P		1/100 - 1/500.

ターゲット情報

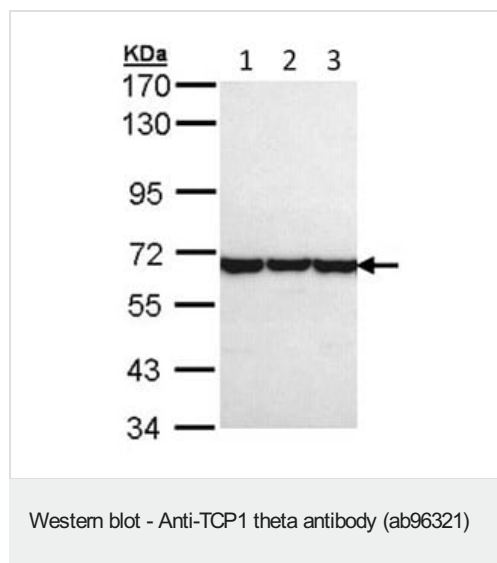
関連性

TCP1 theta is the theta polypeptide of the CCT chaperonin molecule complex. The intact CCT complex is composed of eight polypeptides in a double ring. TCP1 theta is a molecular chaperone that assists the folding of proteins upon ATP hydrolysis. CCT is important within cells in aiding the folding of proteins including actin, tubulin and the VHL tumour suppressor protein.

細胞内局在

Cytoplasm. Cytoplasm; cytoskeleton; centrosome

画像



All lanes : Anti-TCP1 theta antibody (ab96321) at 1/1000 dilution

Lane 1 : A431 whole cell lysate

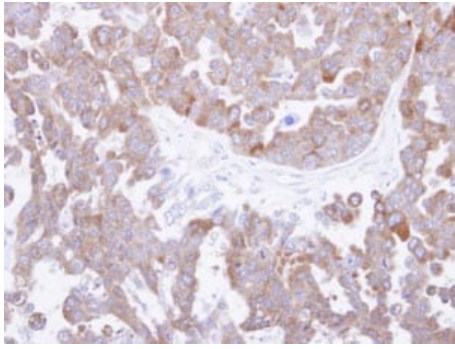
Lane 2 : H1299 whole cell lysate

Lane 3 : HeLa whole cell lysate

Lysates/proteins at 30 µg per lane.

Predicted band size: 60 kDa

7.5% SDS PAGE



Immunohistochemistry analysis of paraffin-embedded OVCAR3 xenograft, using ab96321 at 1/500 dilution.

Immunohistochemistry (Formalin/PFA-fixed paraffin-embedded sections) - Anti-TCP1 theta antibody (ab96321)

Please note: All products are "FOR RESEARCH USE ONLY. NOT FOR USE IN DIAGNOSTIC PROCEDURES"

Our Abpromise to you: Quality guaranteed and expert technical support

- Replacement or refund for products not performing as stated on the datasheet
- Valid for 12 months from date of delivery
- Response to your inquiry within 24 hours
- We provide support in Chinese, English, French, German, Japanese and Spanish
- Extensive multi-media technical resources to help you
- We investigate all quality concerns to ensure our products perform to the highest standards

If the product does not perform as described on this datasheet, we will offer a refund or replacement. For full details of the Abpromise, please visit <https://www.abcam.co.jp/abpromise> or contact our technical team.

Terms and conditions

- Guarantee only valid for products bought direct from Abcam or one of our authorized distributors