

### Anti-Tcl1 antibody [EPR3949] ab108978

リコンビナント **RabMAb**

★★★★☆ **3 Abreviews** **1 References** 画像数 **13**

#### 製品の概要

製品名	Anti-Tcl1 antibody [EPR3949]
製品の詳細	Rabbit monoclonal [EPR3949] to Tcl1
由来種	Rabbit
アプリケーション	<b>適用あり:</b> Flow Cyt (Intra), WB, IHC-P, ICC/IF
種交差性	<b>交差種:</b> Human
免疫原	Synthetic peptide. This information is proprietary to Abcam and/or its suppliers.
ポジティブ・コントロール	Daudi and ramos cell lysates Human tonsil tissue Ramos whole cell lysates Jurkat (human acute T cell leukemia)
特記事項	<p>This product is a recombinant monoclonal antibody, which offers several advantages including:</p> <ul style="list-style-type: none"> <li>- High batch-to-batch consistency and reproducibility</li> <li>- Improved sensitivity and specificity</li> <li>- Long-term security of supply</li> <li>- Animal-free production</li> </ul> <p>For more information <a href="#">see here</a>.</p> <p>Our RabMAb<sup>®</sup> technology is a patented hybridoma-based technology for making rabbit monoclonal antibodies. For details on our patents, please refer to <a href="#">RabMAb<sup>®</sup> patents</a>.</p> <p>Mouse, Rat: We have preliminary internal testing data to indicate this antibody may not react with these species. Please contact us for more information.</p>

#### 製品の特性

製品の状態	Liquid
保存方法	Shipped at 4°C. Store at +4°C short term (1-2 weeks). Upon delivery aliquot. Store at -20°C. Avoid freeze / thaw cycle.
バッファー	<p>pH: 7.20</p> <p>Preservative: 0.01% Sodium azide</p> <p>Constituents: 40% Glycerol (glycerin, glycerine), 59% PBS, 0.05% BSA</p>
精製度	Protein A purified
ポリ/モノ	モノクローナル

クローン名	EPR3949
アイソタイプ	IgG

## アプリケーション

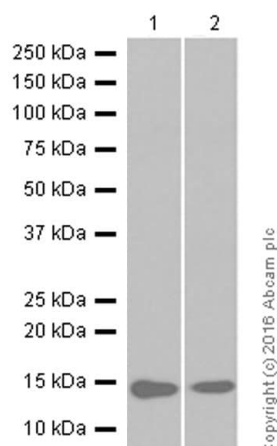
**The Abpromise guarantee**      **Abpromise保証は、**次のテスト済みアプリケーションにおけるab108978の使用に適用されます  
アプリケーションノートには、推奨の開始希釈率がありますが、適切な希釈率につきましてはご検討ください。

アプリケーション	Abreviews	特記事項
Flow Cyt (Intra)		1/400. <b>ab172730</b> - Rabbit monoclonal IgG, is suitable for use as an isotype control with this antibody. Unpurified format: 1/100 - 1/1000.
WB		1/1000 - 1/10000. Predicted molecular weight: 13 kDa.
IHC-P	★★★★★ (2)	1/100 - 1/700. Perform heat mediated antigen retrieval before commencing with IHC staining protocol. Perform antigen retrieval
ICC/IF		1/100 - 1/250.

## ターゲット情報

機能	Enhances the phosphorylation and activation of AKT1, AKT2 and AKT3. Promotes nuclear translocation of AKT1. Enhances cell proliferation, stabilizes mitochondrial membrane potential and promotes cell survival.
組織特異性	Restricted in the T-cell lineage to immature thymocytes and activated peripheral lymphocytes. Preferentially expressed early in T- and B-lymphocyte differentiation.
関連疾患	Note=Chromosomal aberrations activating TCL1A are found in chronic T-cell leukemias (T-CLL). Translocation t(14;14)(q11;q32); translocation t(7;14)(q35;q32); inversion inv(14)(q11;q32) that involves the T-cell receptor alpha/delta loci.
配列類似性	Belongs to the TCL1 family.
細胞内局在	Cytoplasm. Nucleus. Microsome. Endoplasmic reticulum. Microsomal fraction.

## 画像



Western blot - Anti-Tcl1 antibody [EPR3949]  
(ab108978)

**All lanes :** Anti-Tcl1 antibody [EPR3949] (ab108978) at 1/1000 dilution

**Lane 1 :** Ramos (human Burkitt's lymphoma) whole cell lysate

**Lane 2 :** Daudi (human Burkitt's lymphoma) whole cell lysate

Lysates/proteins at 20 µg per lane.

#### Secondary

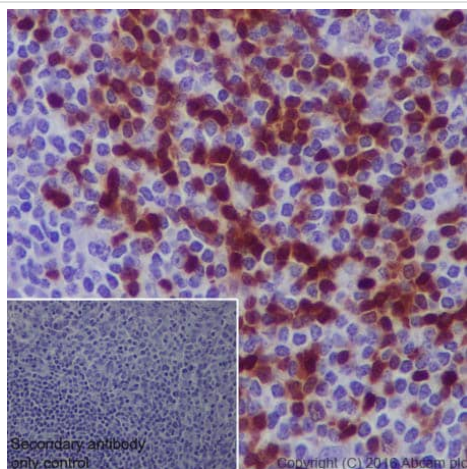
**All lanes :** Anti-Rabbit IgG (HRP), specific to the non-reduced form of IgG at 1/2000 dilution

**Predicted band size:** 13 kDa

**Additional bands at:** 13 kDa. We are unsure as to the identity of these extra bands.

**Blocking buffer:** 5% NFDM/TBST

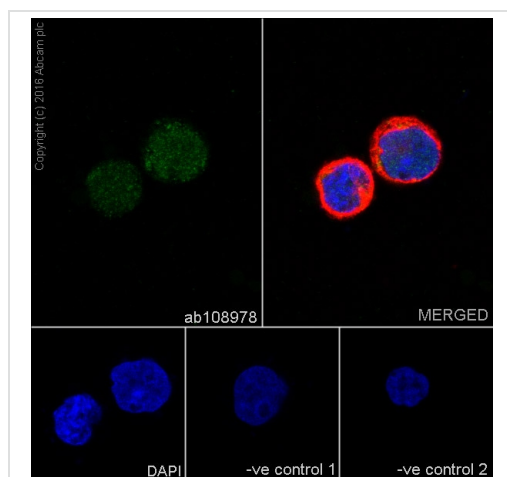
**Diluting buffer:** 5% NFDM/TBST



Immunohistochemistry (Formalin/PFA-fixed paraffin-embedded sections) - Anti-Tcl1 antibody [EPR3949]  
(ab108978)

ab108978 staining Tcl1 in human tonsil tissue sections by Immunohistochemistry (IHC-P - paraformaldehyde-fixed, paraffin-embedded sections). Tissue was fixed with paraformaldehyde and antigen retrieval was by heat mediation in a EDTA buffer. Samples were incubated with primary antibody at a dilution of 1/700. A goat anti-rabbit IgG H&L (HRP) **ab97051** was used as the secondary antibody at 1/500.

**Negative control 1:** PBS in place of primary antibody.

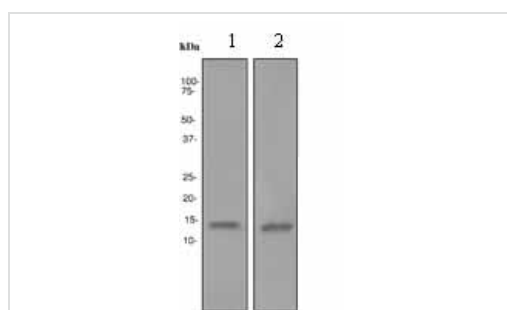


Immunocytochemistry/ Immunofluorescence - Anti-Tc11 antibody [EPR3949] (ab108978)

ab108978 staining Tc11 in Jurkat (human acute T cell leukemia) cells by ICC/IF (Immunocytochemistry/immunofluorescence). Cells were fixed with 4% Paraformaldehyde and permeabilized with 0.1% Triton X-100. Samples were incubated with primary antibody at a dilution of 1/200. A goat anti rabbit IgG (Alexa Fluor® 488) ([ab150077](#)) was used as the secondary antibody at 1/1000. [ab7291](#) and [ab150120](#) were used as counterstains for primary antibody ab108978 and secondary antibody [ab150077](#) respectively and DAPI was used as a nuclear counterstain.

**Negative control 1:** Rabbit primary antibody and anti-mouse secondary antibody ([ab150120](#))

**Negative control 2:** Mouse primary antibody ([ab7291](#)) and anti-rabbit secondary antibody ([ab150077](#))



Western blot - Anti-Tc11 antibody [EPR3949] (ab108978)

**All lanes :** Anti-Tc11 antibody [EPR3949] (ab108978) at 1/1000 dilution

**Lane 1 :** Daudi cell lysate

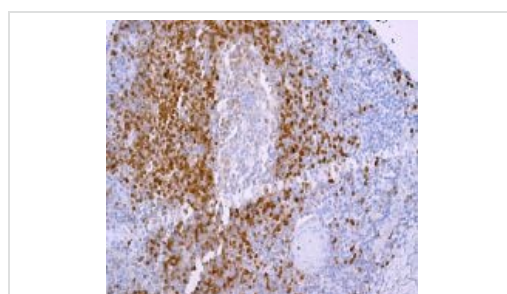
**Lane 2 :** Ramos cell lysates

Lysates/proteins at 10 µg per lane.

## Secondary

**All lanes :** Standard HRP labelled goat anti-goat. at 1/2000 dilution

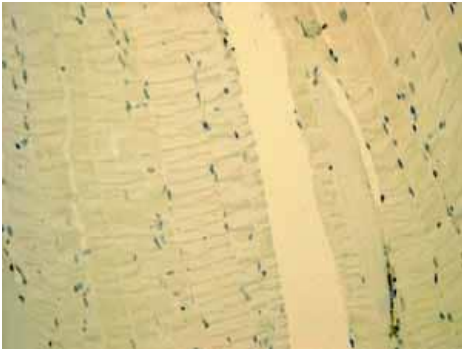
**Predicted band size:** 13 kDa



Immunohistochemistry (Formalin/PFA-fixed paraffin-embedded sections) - Anti-Tc11 antibody [EPR3949] (ab108978)

Immunohistochemical analysis of paraffin-embedded Human tonsil tissue using ab108978.

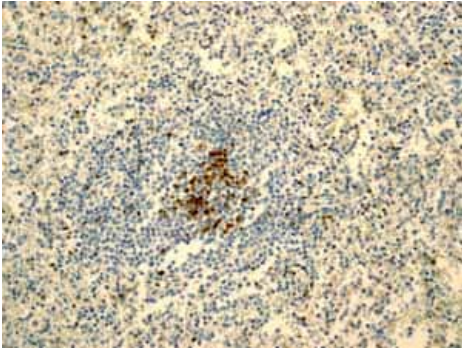
Perform heat mediated antigen retrieval before commencing with IHC staining protocol.



Immunohistochemistry (Formalin/PFA-fixed paraffin-embedded sections) - Anti-Tcl1 antibody [EPR3949] (ab108978)

ab108978 showing negative staining in Skeletal muscle tissue.

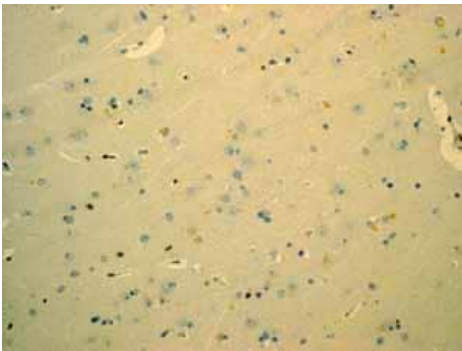
Perform heat mediated antigen retrieval before commencing with IHC staining protocol.



Immunohistochemistry (Formalin/PFA-fixed paraffin-embedded sections) - Anti-Tcl1 antibody [EPR3949] (ab108978)

ab108978 showing positive staining in Normal spleen tissue.

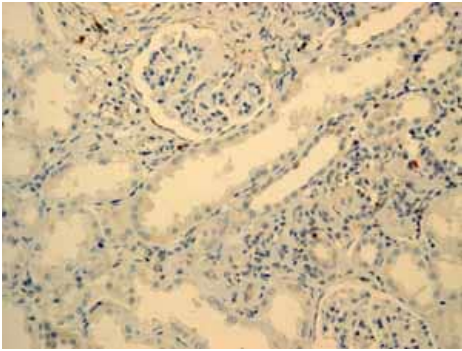
Perform heat mediated antigen retrieval before commencing with IHC staining protocol.



Immunohistochemistry (Formalin/PFA-fixed paraffin-embedded sections) - Anti-Tcl1 antibody [EPR3949] (ab108978)

ab108978 showing negative staining in Normal brain tissue.

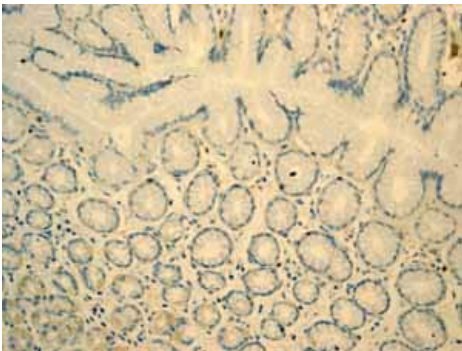
Perform heat mediated antigen retrieval before commencing with IHC staining protocol.



Immunohistochemistry (Formalin/PFA-fixed paraffin-embedded sections) - Anti-Tc11 antibody [EPR3949] (ab108978)

ab108978 showing negative staining in Normal kidney tissue.

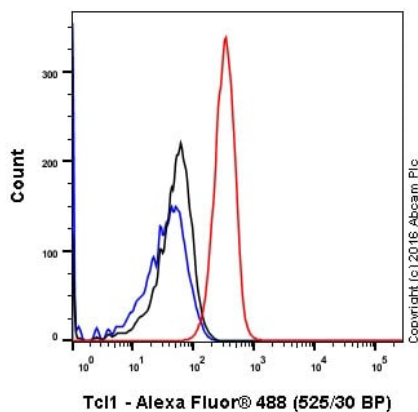
Perform heat mediated antigen retrieval before commencing with IHC staining protocol.



Immunohistochemistry (Formalin/PFA-fixed paraffin-embedded sections) - Anti-Tc11 antibody [EPR3949] (ab108978)

ab108978 showing negative staining in Normal stomach tissue.

Perform heat mediated antigen retrieval before commencing with IHC staining protocol.



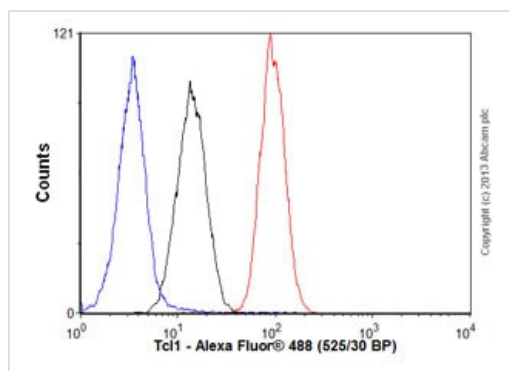
Flow Cytometry (Intracellular) - Anti-Tc11 antibody [EPR3949] (ab108978)

ab108978 staining Tc11 in the human cell line Ramos (human Burkitt's lymphoma) by intracellular flow cytometry. Cells were fixed with 4% paraformaldehyde and the sample was incubated with the primary antibody at a dilution of 1/400. A goat anti rabbit IgG (Alexa Fluor® 488) at a dilution of 1/2000 was used as the secondary antibody.

Isoytype control: Rabbit monoclonal IgG (Black)

Unlabelled control: Cell without incubation with primary antibody and secondary antibody (Blue)





Flow Cytometry (Intracellular) - Anti-Tcl1 antibody  
[EPR3949] (ab108978)

Overlay histogram showing Ramos cells stained with ab108978 (red line). The cells were fixed with 80% methanol (5 min) and then permeabilized with 0.1% PBS-Tween for 20 min. The cells were then incubated in 1x PBS / 10% normal goat serum / 0.3M glycine to block non-specific protein-protein interactions followed by the antibody (ab108978, 1/1000 dilution) for 30 min at 22°C. The secondary antibody used was Alexa Fluor® 488 goat anti-rabbit IgG (H&L) (**ab150077**) at 1/2000 dilution for 30 min at 22°C. Isotype control antibody (black line) was rabbit IgG (monoclonal) (0.1µg/1x10<sup>6</sup> cells) used under the same conditions. Unlabelled sample (blue line) was also used as a control. Acquisition of >5,000 events were collected using a 20mW Argon ion laser (488nm) and 525/30 bandpass filter. This antibody gave a positive signal in Ramos cells fixed with 4% paraformaldehyde (10 min)/permeabilized with 0.1% PBS-Tween for 20 min used under the same conditions.

#### Why choose a recombinant antibody?



**Research with confidence**  
Consistent and reproducible results



**Long-term and scalable supply**  
Recombinant technology



**Success from the first experiment**  
Confirmed specificity



**Ethical standards compliant**  
Animal-free production

Anti-Tcl1 antibody [EPR3949] (ab108978)

**Please note:** All products are "FOR RESEARCH USE ONLY. NOT FOR USE IN DIAGNOSTIC PROCEDURES"

#### Our Abpromise to you: Quality guaranteed and expert technical support

- Replacement or refund for products not performing as stated on the datasheet
- Valid for 12 months from date of delivery
- Response to your inquiry within 24 hours
- We provide support in Chinese, English, French, German, Japanese and Spanish
- Extensive multi-media technical resources to help you

- We investigate all quality concerns to ensure our products perform to the highest standards

If the product does not perform as described on this datasheet, we will offer a refund or replacement. For full details of the Abpromise, please visit <https://www.abcam.co.jp/abpromise> or contact our technical team.

#### **Terms and conditions**

---

- Guarantee only valid for products bought direct from Abcam or one of our authorized distributors