


### Anti-Tau (phospho S199) antibody [EPR2401Y] ab81268

リコンビナント RabMAb

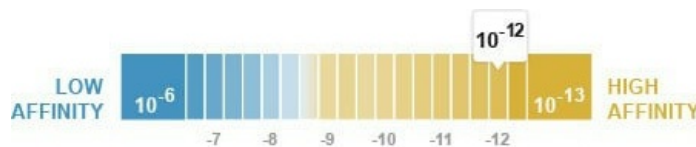
★★★★☆ **2 Abreviews** **12 References** 画像数 7

#### 製品の概要

|              |   |
|--------------|---|
| 製品名          | Anti-Tau (phospho S199) antibody [EPR2401Y]   |
| 製品の詳細        | Rabbit monoclonal [EPR2401Y] to Tau (phospho S199)  |
| 由来種          | Rabbit  |
| 特異性          | The specificity of this antibody refers to P10636-8.  |
| アプリケーション     | <b>適用あり:</b> WB, Dot blot<br><b>適用なし:</b> IHC-P   |
| 種交差性         | <b>交差種:</b> Mouse, Human<br><b>交差が予測される動物種:</b> Rat    |
| 免疫原          | Synthetic peptide. This information is proprietary to Abcam and/or its suppliers.   |
| ポジティブ・コントロール | WB: Mouse cerebral cortex and human hippocampus tissue lysates, SH SY5Y cell lysate.  |
| 特記事項         | This product is a recombinant monoclonal antibody, which offers several advantages including:<br><ul style="list-style-type: none"> <li>- High batch-to-batch consistency and reproducibility</li> <li>- Improved sensitivity and specificity</li> <li>- Long-term security of supply</li> <li>- Animal-free production</li> </ul> For more information <a href="#">see here</a> .<br>Our RabMAb <sup>®</sup> technology is a patented hybridoma-based technology for making rabbit monoclonal antibodies. For details on our patents, please refer to <a href="#">RabMAb<sup>®</sup> patents</a> . |

#### 製品の特性

|                         |  |
|-------------------------|--|
| 製品の状態                   | Liquid   |
| 保存方法                    | Shipped at 4°C. Upon delivery aliquot and store at -20°C. Avoid repeated freeze / thaw cycles. |
| 解離定数 (K <sub>D</sub> 値) | K <sub>D</sub> = 2.95 x 10 <sup>-12</sup> M  |



[Learn more about K<sub>D</sub>](#)

|        |  |
|--------|--|
| バッファー  | pH: 7.20<br>Preservative: 0.01% Sodium azide<br>Constituents: 0.05% BSA, 40% Glycerol (glycerin, glycerine), 59% PBS |
| 精製度    | Protein A purified   |
| ポリ/モノ  | モノクローナル  |
| クローン名  | EPR2401Y   |
| アイソタイプ | IgG  |

## アプリケーション

**The Abpromise guarantee**      **Abpromise保証は、次のテスト済みアプリケーションにおけるab81268の使用に適用されます**  
 アプリケーションノートには、推奨の開始希釈率がありますが、適切な希釈率につきましてはご検討ください。

| アプリケーション | Abreviews | 特記事項   |
|----------|-----------|--|
| WB       | ★★★★☆ (1) | 1/5000 - 1/20000. Detects a band of approximately 55 kDa (predicted molecular weight: 79 kDa). |
| Dot blot |           | 1/1000.  |

**追加情報**      Is unsuitable for IHC-P.

## ターゲット情報

|              |   |
|--------------|---|
| <b>機能</b>    | Promotes microtubule assembly and stability, and might be involved in the establishment and maintenance of neuronal polarity. The C-terminus binds axonal microtubules while the N-terminus binds neural plasma membrane components, suggesting that tau functions as a linker protein between both. Axonal polarity is predetermined by tau localization (in the neuronal cell) in the domain of the cell body defined by the centrosome. The short isoforms allow plasticity of the cytoskeleton whereas the longer isoforms may preferentially play a role in its stabilization.   |
| <b>組織特異性</b> | Expressed in neurons. Isoform PNS-tau is expressed in the peripheral nervous system while the others are expressed in the central nervous system.   |
| <b>関連疾患</b>  | Note=In Alzheimer disease, the neuronal cytoskeleton in the brain is progressively disrupted and replaced by tangles of paired helical filaments (PHF) and straight filaments, mainly composed of hyperphosphorylated forms of TAU (PHF-TAU or AD P-TAU).<br>Defects in MAPT are a cause of frontotemporal dementia (FTD) [MIM:600274]; also called frontotemporal dementia (FTD), pallido-ponto-nigral degeneration (PPND) or historically termed Pick complex. This form of frontotemporal dementia is characterized by presenile dementia with behavioral changes, deterioration of cognitive capacities and loss of memory. In some cases, parkinsonian symptoms are prominent. Neuropathological changes include frontotemporal atrophy often associated with atrophy of the basal ganglia, substantia nigra, amygdala. In most cases, protein tau deposits are found in glial cells and/or neurons.<br>Defects in MAPT are a cause of Pick disease of the brain (PIDB) [MIM:172700]. It is a rare form of dementia pathologically defined by severe atrophy, neuronal loss and gliosis. It is characterized by the occurrence of tau-positive inclusions, swollen neurons (Pick cells) and argentophilic neuronal inclusions known as Pick bodies that disproportionately affect the frontal and temporal cortical regions. Clinical features include aphasia, apraxia, confusion, anomia, memory loss and personality deterioration. |

Note=Defects in MAPT are a cause of corticobasal degeneration (CBD). It is marked by extrapyramidal signs and apraxia and can be associated with memory loss. Neuropathologic features may overlap Alzheimer disease, progressive supranuclear palsy, and Parkinson disease.

Defects in MAPT are a cause of progressive supranuclear palsy type 1 (PSNP1) [MIM:601104, 260540]; also abbreviated as PSP and also known as Steele-Richardson-Olszewski syndrome. PSNP1 is characterized by akinetic-rigid syndrome, supranuclear gaze palsy, pyramidal tract dysfunction, pseudobulbar signs and cognitive capacities deterioration. Neurofibrillary tangles and gliosis but no amyloid plaques are found in diseased brains. Most cases appear to be sporadic, with a significant association with a common haplotype including the MAPT gene and the flanking regions. Familial cases show an autosomal dominant pattern of transmission with incomplete penetrance; genetic analysis of a few cases showed the occurrence of tau mutations, including a deletion of Asn-613.

**配列類似性**

Contains 4 Tau/MAP repeats.

**発生段階**

Four-repeat (type II) tau is expressed in an adult-specific manner and is not found in fetal brain, whereas three-repeat (type I) tau is found in both adult and fetal brain.

**ドメイン**

The tau/MAP repeat binds to tubulin. Type I isoforms contain 3 repeats while type II isoforms contain 4 repeats.

**翻訳後修飾**

Phosphorylation at serine and threonine residues in S-P or T-P motifs by proline-directed protein kinases (PDPK: CDK1, CDK5, GSK-3, MAPK) (only 2-3 sites per protein in interphase, seven-fold increase in mitosis, and in PHF-tau), and at serine residues in K-X-G-S motifs by MAP/microtubule affinity-regulating kinase (MARK) in Alzheimer diseased brains.

Phosphorylation decreases with age. Phosphorylation within tau's repeat domain or in flanking regions seems to reduce tau's interaction with, respectively, microtubules or plasma membrane components. Phosphorylation on Ser-610, Ser-622, Ser-641 and Ser-673 in several isoforms during mitosis.

Polyubiquitinated. Requires functional TRAF6 and may provoke SQSTM1-dependent degradation by the proteasome (By similarity). PHF-tau can be modified by three different forms of polyubiquitination. 'Lys-48'-linked polyubiquitination is the major form, 'Lys-6'-linked and 'Lys-11'-linked polyubiquitination also occur.

Glycation of PHF-tau, but not normal brain tau. Glycation is a non-enzymatic post-translational modification that involves a covalent linkage between a sugar and an amino group of a protein molecule forming ketoamine. Subsequent oxidation, fragmentation and/or cross-linking of ketoamine leads to the production of advanced glycation endproducts (AGES). Glycation may play a role in stabilizing PHF aggregation leading to tangle formation in AD.

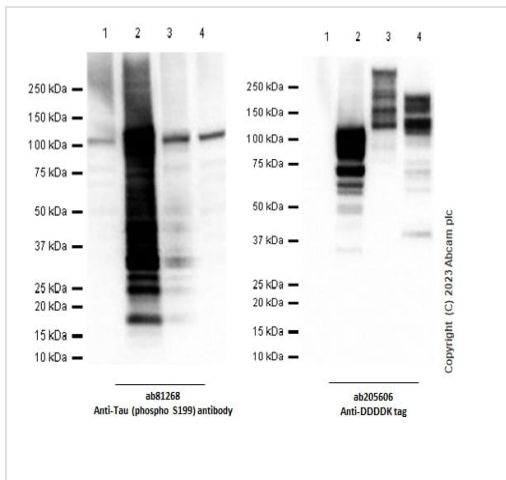
**細胞内局在**

Cytoplasm > cytosol. Cell membrane. Cytoplasm > cytoskeleton. Cell projection > axon. Mostly found in the axons of neurons, in the cytosol and in association with plasma membrane components.

**製品の状態**

There are 9 isoforms produced by alternative splicing.

**画像**



Western blot - Anti-Tau (phospho S199) antibody [EPR2401Y] (ab81268)

**All lanes :** Anti-Tau (phospho S199) antibody [EPR2401Y] (ab81268) at 1/1000 dilution

**Lane 1 :** 293T cells transfected with an empty vector containing a flag tag whole cell lysate

**Lane 2 :** 293T cells transfected with a human Tau expression vector containing a flag whole cell lysate

**Lane 3 :** 293T cells transfected with a human MAP2 expression vector containing a flag whole cell lysate

**Lane 4 :** 293T cells transfected with a human MAP4 expression vector containing a flag whole cell lysate

Lysates/proteins at 20 µg per lane.

### Secondary

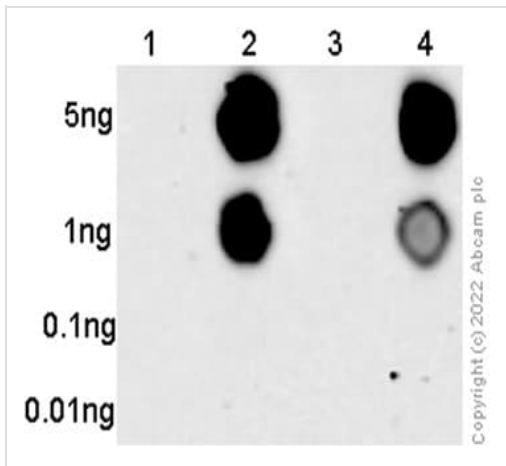
**All lanes :** Goat Anti-Rabbit IgG H&L (HRP) (**ab97051**) at 1/20000 dilution (Goat Anti-Rabbit IgG, (H+L), Peroxidase conjugated)

**Predicted band size:** 79 kDa

**Observed band size:** 55-100 kDa

**Exposure time:** 1 second

**Blocking/dilution buffer:** 5% NFDM/TBST



Dot Blot - Anti-Tau (phospho S199) antibody [EPR2401Y] (ab81268)

Dot blot analysis using 1/1000 dilution ab81268 and Goat Anti-Rabbit IgG, (H+L), Peroxidase conjugated (**ab97051**) secondary at 1/100000 dilution.

Blocking and diluting buffer: 5% NFDN/TBST

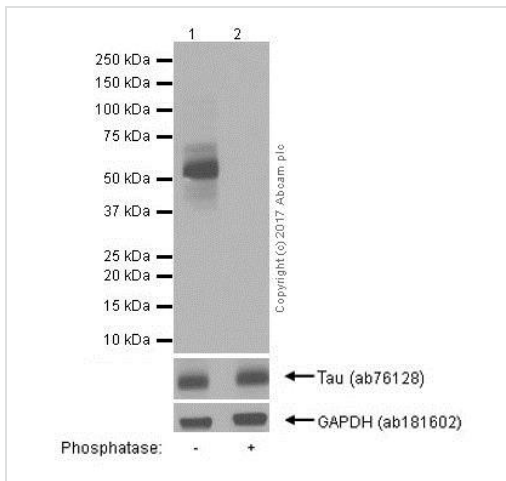
Lane 1: Tau non-phospho peptide

Lane 2: Tau S199 phospho peptide

Lane 3: Tau S202 phospho peptide

Lane 4: Tau S199+S202 phospho peptide

Exposure time: 3 minutes



Western blot - Anti-Tau (phospho S199) antibody [EPR2401Y] (ab81268)

**All lanes** : Anti-Tau (phospho S199) antibody [EPR2401Y] (ab81268) at 1/1000 dilution

**Lane 1** : Mouse cerebral cortex tissue lysate

**Lane 2** : Mouse cerebral cortex tissue lysate, The membrane was incubated with phosphatase

Lysates/proteins at 10 µg per lane.

### Secondary

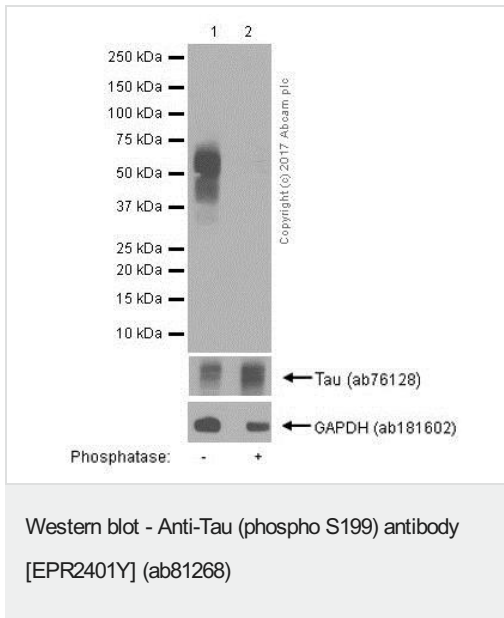
**All lanes** : Goat Anti-Rabbit IgG H&L (HRP) (**ab97051**) at 1/100000 dilution

**Predicted band size:** 79 kDa

**Observed band size:** 55 kDa

**Exposure time:** 5 seconds

**Blocking and dilution buffer:** 5% NFDN/TBST.



**All lanes :** Anti-Tau (phospho S199) antibody [EPR2401Y] (ab81268) at 1/1000 dilution

**Lane 1 :** Human hippocampus tissue lysate

**Lane 2 :** Human hippocampus tissue lysate. The membrane was incubated with phosphatase

Lysates/proteins at 10 µg per lane.

### Secondary

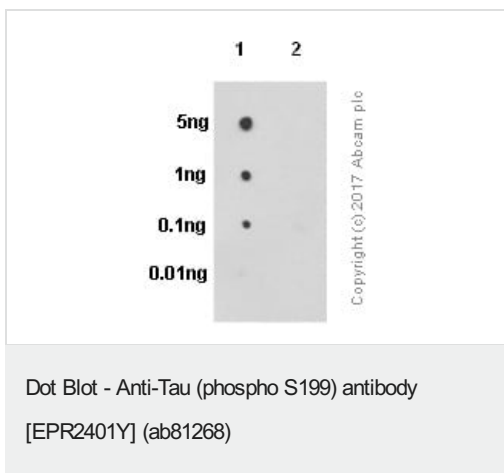
**All lanes :** VeriBlot for IP Detection Reagent (HRP) (**ab131366**) at 1/2000 dilution

**Predicted band size:** 79 kDa

**Observed band size:** 55 kDa

**Exposure time:** 1 minute

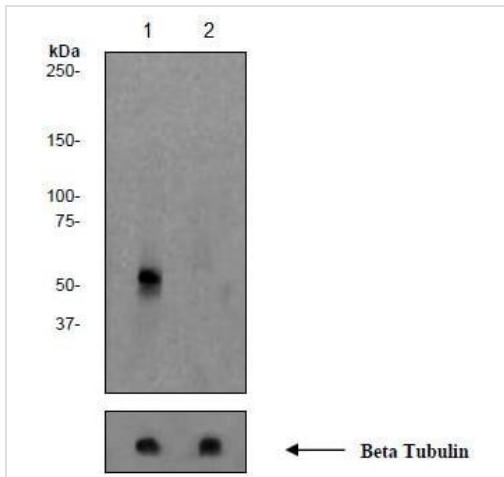
**Blocking and dilution buffer:** 5% NFDm/TBST.



Dot blot analysis of Tau (pS199) peptide (Lane 1) and Tau non-phospho peptide (Lane 2) labelling Tau (pS199) with ab81268 at a dilution of 1/1000. **ab97051** (peroxidase-conjugated goat anti-rabbit IgG (H+L)) was used as the secondary antibody at a dilution of 1/100000.

**Exposure time:** 3 minutes.

**Blocking and dilution buffer:** 5% NFDm/TBST.



Western blot - Anti-Tau (phospho S199) antibody [EPR2401Y] (ab81268)

**All lanes :** Anti-Tau (phospho S199) antibody [EPR2401Y] (ab81268) at 1/20000 dilution

**Lane 1 :** SH SY5Y cell lysate

**Lane 2 :** SH SY5Y cell lysate treated with alkaline phosphatase

Lysates/proteins at 10 µg per lane.





**Secondary**

**All lanes :** HRP labelled goat anti-rabbit at 1/2000 dilution

**Predicted band size:** 79 kDa

**Observed band size:** 55 kDa

Why choose a recombinant antibody?

|  |  |
|--|--|
| <br><b>Research with confidence</b><br>Consistent and reproducible results | <br><b>Long-term and scalable supply</b><br>Recombinant technology |
| <br><b>Success from the first experiment</b><br>Confirmed specificity     | <br><b>Ethical standards compliant</b><br>Animal-free production  |

Anti-Tau (phospho S199) antibody [EPR2401Y] (ab81268)

**Please note:** All products are "FOR RESEARCH USE ONLY. NOT FOR USE IN DIAGNOSTIC PROCEDURES"

**Our Abpromise to you: Quality guaranteed and expert technical support**

- Replacement or refund for products not performing as stated on the datasheet
- Valid for 12 months from date of delivery
- Response to your inquiry within 24 hours
- We provide support in Chinese, English, French, German, Japanese and Spanish
- Extensive multi-media technical resources to help you
- We investigate all quality concerns to ensure our products perform to the highest standards

If the product does not perform as described on this datasheet, we will offer a refund or replacement. For full details of the Abpromise, please visit <https://www.abcam.co.jp/abpromise> or contact our technical team.

## **Terms and conditions**

---

- Guarantee only valid for products bought direct from Abcam or one of our authorized distributors