


Anti-Talin 1 antibody ab71333

★★★★☆ **4 Abreviews** **29 References** 画像数 5

製品の概要

製品名	Anti-Talin 1 antibody
製品の詳細	Rabbit polyclonal to Talin 1
由来種	Rabbit
特異性	Replenishment batches of our polyclonal antibody, ab71333 are tested in WB. Previous batches were additionally validated in ICC/IF and IHC-P. These applications are still expected to work and are covered by our Abpromise guarantee. You may also be interested in our alternative recombinant antibody, ab108480 .
アプリケーション	適用あり: ICC/IF, IHC-P, WB
種交差性	交差種: Mouse, Human 交差が予測される動物種: Rat, Chicken 
免疫原	Synthetic peptide corresponding to Human Talin 1 aa 1650-1750 (internal sequence) conjugated to keyhole limpet haemocyanin. (Peptide available as ab71332)
ポジティブ・コントロール	ICC/IF: HeLa cells.
特記事項	<p>The Life Science industry has been in the grips of a reproducibility crisis for a number of years. Abcam is leading the way in addressing this with our range of recombinant monoclonal antibodies and knockout edited cell lines for gold-standard validation. Please check that this product meets your needs before purchasing.</p> <p>If you have any questions, special requirements or concerns, please send us an inquiry and/or contact our Support team ahead of purchase. Recommended alternatives for this product can be found below, along with publications, customer reviews and Q&As</p>

製品の特性

製品の状態	Liquid
保存方法	Shipped at 4°C. Store at +4°C short term (1-2 weeks). Upon delivery aliquot. Store at -20°C or -80°C. Avoid freeze / thaw cycle.
バッファー	pH: 7.40 Preservative: 0.02% Sodium azide Constituent: PBS

Batches of this product that have a concentration < 1mg/ml may have BSA added as a stabilising agent. If you would like information about the formulation of a specific lot, please contact our scientific support team who will be happy to help.

精製度	Immunogen affinity purified
ポリ/モノ	ポリクローナル
アイソタイプ	IgG

アプリケーション

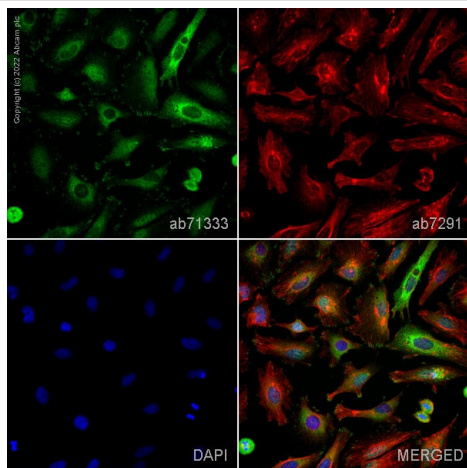
The Abpromise guarantee **Abpromise保証は、** 次のテスト済みアプリケーションにおけるab71333の使用に適用されます
アプリケーションノートには、推奨の開始希釈率がありますが、適切な希釈率につきましてはご検討ください。

アプリケーション	Abreviews	特記事項
ICC/IF		Use a concentration of 1 µg/ml.
IHC-P	★★★★★ (1)	Use a concentration of 5 µg/ml.
WB	★★★★★ (2)	Use a concentration of 1 µg/ml. Detects a band of approximately 270 kDa (predicted molecular weight: 270 kDa).

ターゲット情報

機能	Probably involved in connections of major cytoskeletal structures to the plasma membrane. High molecular weight cytoskeletal protein concentrated at regions of cell-substratum contact and, in lymphocytes, at cell-cell contacts.
配列類似性	Contains 1 FERM domain. Contains 1 ILWEQ domain.
細胞内局在	Cell projection, ruffle membrane. Cytoplasm, cytoskeleton. Cell surface. Cell junction, focal adhesion. Colocalizes with LAYN at the membrane ruffles. Localized preferentially in focal adhesions than fibrillar adhesions (By similarity).

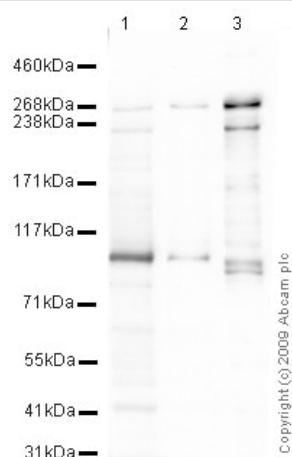
画像



Immunocytochemistry/ Immunofluorescence - Anti-Talin 1 antibody (ab71333)

ab71333 staining Talin 1 in HeLa cells. The cells were fixed with 4% paraformaldehyde (10 min), permeabilized with 0.1% PBS-Tween for 5 minutes and then blocked with 1% BSA/10% normal goat serum/0.3M glycine in 0.1%PBS-Tween for 1h. The cells were then incubated overnight at 4°C with ab71333 at 1µg/ml and **ab7291**, Mouse monoclonal [DM1A] to alpha Tubulin - Loading Control. Cells were then incubated with **ab150081**, Goat polyclonal Secondary Antibody to Rabbit IgG - H&L (Alexa Fluor® 488), pre-adsorbed at 1/1000 dilution (shown in green) and **ab150120**, Goat polyclonal Secondary Antibody to Mouse IgG - H&L (Alexa Fluor® 594), pre-adsorbed at 1/1000 dilution (shown in pseudocolour red). Nuclear DNA was labelled with DAPI (shown in blue).

Image was acquired with a high-content analyser (Operetta CLS, Perkin Elmer) and a maximum intensity projection of confocal sections is shown.



Western blot - Anti-Talin 1 antibody (ab71333)

All lanes : Anti-Talin 1 antibody (ab71333) at 1 µg/ml

Lane 1 : Jurkat (Human T cell lymphoblast-like cell line) Whole Cell Lysate

Lane 2 : Ramos (Human Burkitt's lymphoma cell line) Whole Cell Lysate

Lane 3 : MEF1 (Mouse embryonic fibroblast cell line) Whole Cell Lysate

Lysates/proteins at 10 µg per lane.

Secondary

All lanes : Goat polyclonal to Rabbit IgG - H&L - Pre-Adsorbed (HRP) at 1/3000 dilution

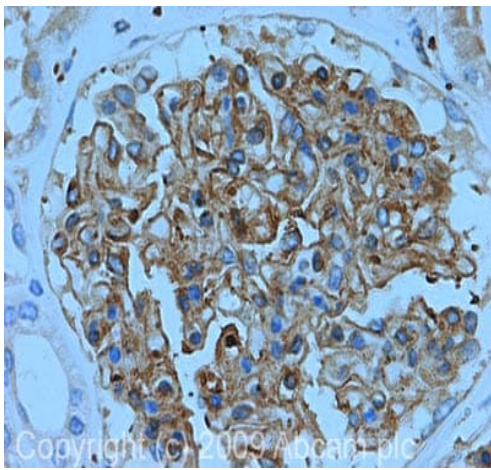
Performed under reducing conditions.

Predicted band size: 270 kDa

Observed band size: 270 kDa

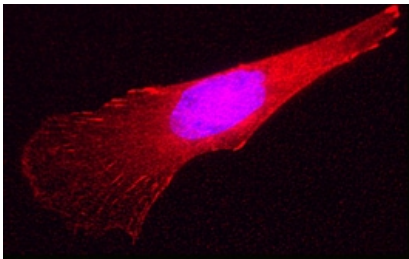
Additional bands at: 100 kDa, 230 kDa. We are unsure as to the identity of these extra bands.

Exposure time: 8 minutes



Immunohistochemistry (Formalin/PFA-fixed paraffin-embedded sections) - Anti-Talin 1 antibody (ab71333)

IHC image of Talin 1 staining in Human Normal Kidney FFPE section, performed on a BondTM system using the standard protocol F. The section was pre-treated using heat mediated antigen retrieval with sodium citrate buffer (pH6, epitope retrieval solution 1) for 20 mins. The section was then incubated with ab71333, 5µg/ml, for 15 mins at room temperature and detected using an HRP conjugated compact polymer system. DAB was used as the chromogen. The section was then counterstained with haematoxylin and mounted with DPX.



Immunocytochemistry/ Immunofluorescence - Anti-Talin 1 antibody (ab71333)

Courtesy of Dr. Shaohua Li, UMDNJ-Robert Wood Johnson Medical School

Image: Courtesy of Dr. Shaohua Li, UMDNJ-Robert Wood Johnson Medical School

Sample: mouse endoderm cell

Preparation:

Fix in 3% PFA in PBS for 30 min at RT

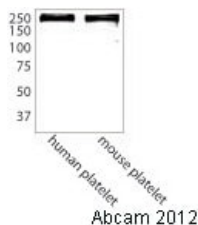
Primary antibody: Rabbit anti-talin (ab71333), 1:100

Secondary antibody: Goat polyclonal Secondary Antibody to Rabbit IgG - H&L (Cy3® 488) preadsorbed ([ab97075](#)), 1:100

Nuclear counterstain: DAPI

Rhodamine-phalloidin, 1:100

Nuclei were counterstained with DAPI



Western blot - Anti-Talin 1 antibody (ab71333)

This image is courtesy of an anonymous abreview.

All lanes : Anti-Talin 1 antibody (ab71333) at 1/1000 dilution

Lane 1 : Human platelets

Lane 2 : Mouse platelets

Lysates/proteins at 20 µg per lane.

Secondary

All lanes : Goat polyclonal to rabbit IgG conjugated to IRDye 800CW (undiluted)

Performed under reducing conditions.

Predicted band size: 270 kDa

Exposure time: 1 minute

Detection method: Licor System

Please note: All products are "FOR RESEARCH USE ONLY. NOT FOR USE IN DIAGNOSTIC PROCEDURES"

Our Abpromise to you: Quality guaranteed and expert technical support

- Replacement or refund for products not performing as stated on the datasheet
- Valid for 12 months from date of delivery
- Response to your inquiry within 24 hours
- We provide support in Chinese, English, French, German, Japanese and Spanish
- Extensive multi-media technical resources to help you
- We investigate all quality concerns to ensure our products perform to the highest standards

If the product does not perform as described on this datasheet, we will offer a refund or replacement. For full details of the Abpromise, please visit <https://www.abcam.co.jp/abpromise> or contact our technical team.

Terms and conditions

- Guarantee only valid for products bought direct from Abcam or one of our authorized distributors