




Anti-TAGLN/Transgelin antibody ab10135

★★★★★ [2 Abreviews](#) [125 References](#) [画像数 1](#)

製品の概要

製品名	Anti-TAGLN/Transgelin antibody
製品の詳細	Goat polyclonal to TAGLN/Transgelin
由来種	Goat
アプリケーション	適用あり: WB, IHC-P, IHC-Fr, ICC/IF, IHC-FoFr, Flow Cyt
種交差性	交差種: Mouse, Rat, Rabbit, Human 交差が予測される動物種: Cow, Dog 
免疫原	Synthetic peptide corresponding to Human TAGLN/Transgelin aa 189-200 (C terminal). Sequence: C-MTGYGRPRQIIS (Peptide available as ab16067 , ab23184) <div>  Run BLAST with  Run BLAST with </div>
ポジティブ・コントロール	WB: Human testes lysate
特記事項	<p>In contrast to fast and slow skeletal muscle cells that fuse and terminally differentiate, smooth muscle cells are able to simultaneously proliferate and express lineage-restricted proteins. One of these proteins, expressed exclusively in smooth muscles, has been referred to as SM22-alpha, a 22-kD protein with structural similarity to the vertebrate thin filament myofibrillar regulatory protein calponin and the Drosophila muscle protein mp20, neither of which play a direct role in the contractile apparatus. The protein is a transformation and shape-change sensitive actin cross-linking/gelling protein found in fibroblasts and smooth muscle. Its expression is down-regulated in many cell lines, and this down-regulation may be an early and sensitive marker for the onset of transformation. A functional role of this protein is unclear.</p> <p>The Life Science industry has been in the grips of a reproducibility crisis for a number of years. Abcam is leading the way in addressing this with our range of recombinant monoclonal antibodies and knockout edited cell lines for gold-standard validation. Please check that this product meets your needs before purchasing.</p> <p>If you have any questions, special requirements or concerns, please send us an inquiry and/or contact our Support team ahead of purchase. Recommended alternatives for this product can be found below, along with publications, customer reviews and Q&As</p>

製品の特性

製品の状態	Liquid
保存方法	Shipped at 4°C. Upon delivery aliquot and store at -20°C or -80°C. Avoid repeated freeze / thaw cycles.
バッファー	pH: 7.30 Preservative: 0.02% Sodium azide Constituents: Tris buffered saline, 0.5% BSA
精製度	Immunogen affinity purified
特記事項 (精製)	Purified from goat serum by ammonium sulphate precipitation followed by antigen affinity chromatography using the immunizing peptide.
一次抗体 備考	In contrast to fast and slow skeletal muscle cells that fuse and terminally differentiate, smooth muscle cells are able to simultaneously proliferate and express lineage-restricted proteins. One of these proteins, expressed exclusively in smooth muscles, has been referred to as SM22-alpha, a 22-kD protein with structural similarity to the vertebrate thin filament myofibrillar regulatory protein calponin and the Drosophila muscle protein mp20, neither of which play a direct role in the contractile apparatus. The protein is a transformation and shape-change sensitive actin cross-linking/gelling protein found in fibroblasts and smooth muscle. Its expression is down-regulated in many cell lines, and this down-regulation may be an early and sensitive marker for the onset of transformation. A functional role of this protein is unclear.
ポリ/モノ	ポリクローナル
アイソタイプ	IgG

アプリケーション

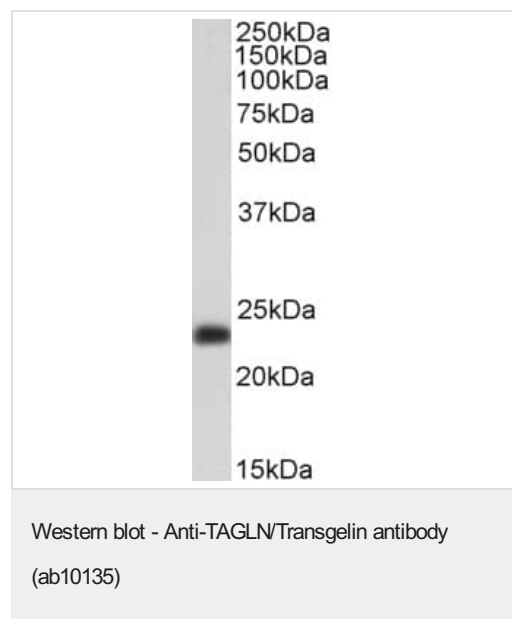
The Abpromise guarantee **Abpromise保証は、次のテスト済みアプリケーションにおけるab10135の使用に適用されます**
 アプリケーションノートには、推奨の開始希釈率がありますが、適切な希釈率につきましてはご検討ください。

アプリケーション	Abreviews	特記事項
WB	★★★★★ (2)	Use a concentration of 0.1 - 1 µg/ml. Detects a band of approximately 24 kDa (predicted molecular weight: 23 kDa). Primary incubation for 1 hour at room temperature.
IHC-P		Use at an assay dependent concentration. PubMed: 16080196
IHC-Fr		Use at an assay dependent concentration. PubMed: 28955046
ICC/IF		Use at an assay dependent concentration. PubMed: 22257561
IHC-FoFr		Use at an assay dependent concentration. PubMed: 26183159
Flow Cyt		Use at an assay dependent concentration. PubMed: 17099777 ab37373 - Goat polyclonal IgG, is suitable for use as an isotype control with this antibody.

ターゲット情報

機能	Actin cross-linking/gelling protein (By similarity). Involved in calcium interactions and contractile properties of the cell that may contribute to replicative senescence.
配列類似性	Belongs to the calponin family. Contains 1 calponin-like repeat. Contains 1 CH (calponin-homology) domain.
細胞内局在	Cytoplasm.

画像



Anti-TAGLN/Transgelin antibody (ab10135) at 0.3 µg/ml + Human Testes lysate at 35 µg

Predicted band size: 23 kDa

Please note: All products are "FOR RESEARCH USE ONLY. NOT FOR USE IN DIAGNOSTIC PROCEDURES"

Our Abpromise to you: Quality guaranteed and expert technical support

- Replacement or refund for products not performing as stated on the datasheet
- Valid for 12 months from date of delivery
- Response to your inquiry within 24 hours
- We provide support in Chinese, English, French, German, Japanese and Spanish
- Extensive multi-media technical resources to help you
- We investigate all quality concerns to ensure our products perform to the highest standards

If the product does not perform as described on this datasheet, we will offer a refund or replacement. For full details of the Abpromise, please visit <https://www.abcam.co.jp/abpromise> or contact our technical team.

Terms and conditions

- Guarantee only valid for products bought direct from Abcam or one of our authorized distributors