

Anti-SYPL2 antibody ab106438

1 References [画像数 3](#)

製品の概要

製品名	Anti-SYPL2 antibody
製品の詳細	Rabbit polyclonal to SYPL2
由来種	Rabbit
アプリケーション	適用あり: ICC/IF, WB, IHC-P
種交差性	交差種: Human
免疫原	15 amino acid synthetic peptide from near the C-terminus of Human SYPL2 (NP_001035799).
ポジティブ・コントロール	Human spleen tissue.
特記事項	<p>The Life Science industry has been in the grips of a reproducibility crisis for a number of years. Abcam is leading the way in addressing this with our range of recombinant monoclonal antibodies and knockout edited cell lines for gold-standard validation. Please check that this product meets your needs before purchasing.</p> <p>If you have any questions, special requirements or concerns, please send us an inquiry and/or contact our Support team ahead of purchase. Recommended alternatives for this product can be found below, along with publications, customer reviews and Q&As</p>

製品の特性

製品の状態	Liquid
保存方法	Shipped at 4°C. Store at 4°C (stable for up to 12 months).
バッファー	pH: 7.2 Preservative: 0.02% Sodium azide Constituent: PBS
精製度	Immunogen affinity purified
ポリ/モノ	ポリクローナル
アイソタイプ	IgG

アプリケーション

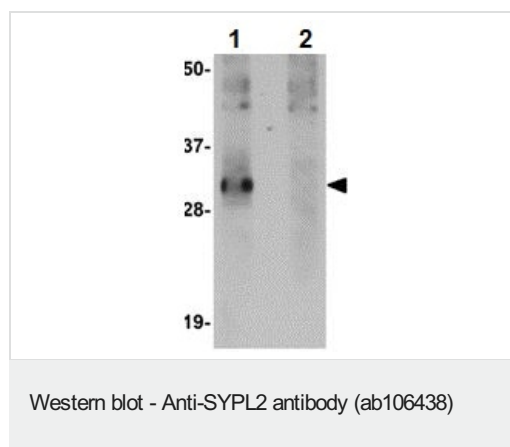
The Abpromise guarantee **Abpromise保証は、次のテスト済みアプリケーションにおけるab106438の使用に適用されます**
アプリケーションノートには、推奨の開始希釈率がありますが、適切な希釈率につきましてはご検討ください。

アプリケーション	Abreviews	特記事項
ICC/IF		Use a concentration of 20 µg/ml.
WB		Use a concentration of 1 - 2 µg/ml. Predicted molecular weight: 30 kDa.
IHC-P		Use at an assay dependent concentration.

ターゲット情報

機能	Involved in communication between the T-tubular and junctional sarcoplasmic reticulum (SR) membranes.
配列類似性	Belongs to the synaptophysin/synaptobrevin family. Contains 1 MARVEL domain.
細胞内局在	Membrane. Triad junction, the junctional complex between the transverse tubule and the sarcoplasmic reticulum.
製品の状態	There are 2 isoforms produced by alternative splicing.

画像



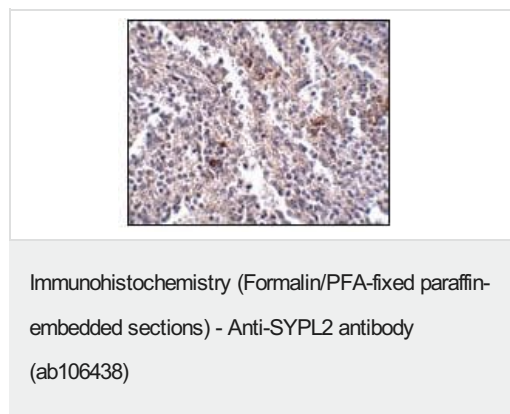
All lanes : Anti-SYPL2 antibody (ab106438) at 1 µg/ml

Lane 1 : Human spleen tissue lysate

Lane 2 : Human spleen tissue lysate with blocking peptide

Lysates/proteins at 15 µg per lane.

Predicted band size: 30 kDa



ab106438, at 2.5 ug/ml, staining SYPL2 in Human spleen tissue by immunohistochemistry.

Immunocytochemistry/ Immunofluorescence - Anti-SYPL2 antibody (ab106438)

Immunofluorescence of SYPL2 in human spleen cells using ab106438

Please note: All products are "FOR RESEARCH USE ONLY. NOT FOR USE IN DIAGNOSTIC PROCEDURES"

Our Abpromise to you: Quality guaranteed and expert technical support

- Replacement or refund for products not performing as stated on the datasheet
- Valid for 12 months from date of delivery
- Response to your inquiry within 24 hours
- We provide support in Chinese, English, French, German, Japanese and Spanish
- Extensive multi-media technical resources to help you
- We investigate all quality concerns to ensure our products perform to the highest standards

If the product does not perform as described on this datasheet, we will offer a refund or replacement. For full details of the Abpromise, please visit <https://www.abcam.co.jp/abpromise> or contact our technical team.

Terms and conditions

- Guarantee only valid for products bought direct from Abcam or one of our authorized distributors