

Anti-Syntaxin antibody [STX01 (HPC-1)] ab3265

★★★★★ [1 Abreviews](#) [15 References](#) [画像数 2](#)

製品の概要

製品名	Anti-Syntaxin antibody [STX01 (HPC-1)]
製品の詳細	Mouse monoclonal [STX01 (HPC-1)] to Syntaxin
由来種	Mouse
特異性	In hippocampus, the antibody recognizes the stratum radiatum, the layer formed by the fibers of denate granule cells, as they synapse onto hippocampal pyramidal cells. In rat retina, it stains the membrane of the amacrine cell bodies and inner plexiform layer. It recognizes some neurons early in development and can be detected on migrating amacrine cells in embryonic retina.
アプリケーション	適用あり: WB, ICC/IF
種交差性	交差種: Rat, Human
免疫原	Recombinant fragment corresponding to Rat Syntaxin aa 3-225.
ポジティブ・コントロール	IMR-5 cells Cerebral cortex tissue sections. SH-SY5Y cell lysate
特記事項	<p>The Life Science industry has been in the grips of a reproducibility crisis for a number of years. Abcam is leading the way in addressing this with our range of recombinant monoclonal antibodies and knockout edited cell lines for gold-standard validation. Please check that this product meets your needs before purchasing.</p> <p>If you have any questions, special requirements or concerns, please send us an inquiry and/or contact our Support team ahead of purchase. Recommended alternatives for this product can be found below, along with publications, customer reviews and Q&As</p>

製品の特性

製品の状態	Liquid
保存方法	Shipped at 4°C. Store at +4°C short term (1-2 weeks). Store at -20°C or -80°C. Avoid freeze / thaw cycle.
バッファー	pH: 7.40 Constituent: PBS
精製度	Protein G purified
ポリ/モノ	モノクローナル
クローン名	STX01 (HPC-1)
アイソタイプ	IgG1

アプリケーション

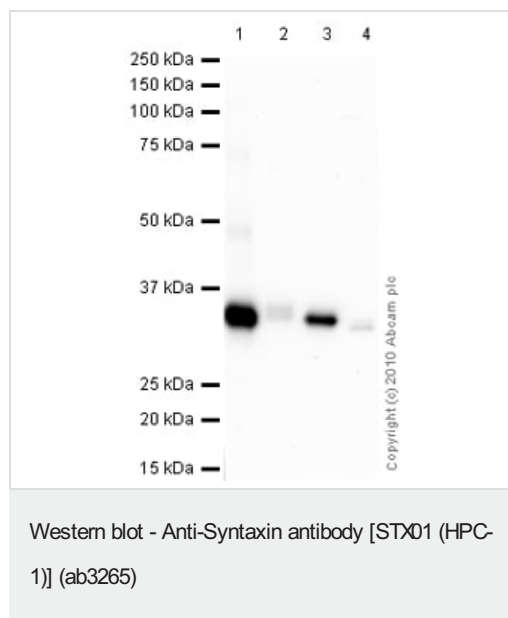
The Abpromise guarantee **Abpromise保証は、** 次のテスト済みアプリケーションにおけるab3265の使用に適用されます
アプリケーションノートには、推奨の開始希釈率がありますが、適切な希釈率につきましてはご検討ください。

アプリケーション	Abreviews	特記事項
WB		1/100. Detects a band of approximately 31 kDa (predicted molecular weight: 35 kDa).
ICC/IF		1/50.

ターゲット情報

機能	Potentially involved in docking of synaptic vesicles at presynaptic active zones. May mediate Ca(2+)-regulation of exocytosis acrosomal reaction in sperm.
配列類似性	Belongs to the syntaxin family. Contains 1 t-SNARE coiled-coil homology domain.
翻訳後修飾	Phosphorylated by CK2.
細胞内局在	Membrane.

画像



All lanes : Anti-Syntaxin antibody [STX01 (HPC-1)] (ab3265) at 1 µg/ml

Lane 1 : Human brain tissue lysate - total protein ([ab29466](#))

Lane 2 : Human spinal cord tissue lysate - total protein ([ab29188](#))

Lane 3 : Spinal Cord (Rat) Tissue Lysate

Lane 4 : SHSY-5Y (Human neuroblastoma cell line) Whole Cell Lysate

Lysates/proteins at 10 µg per lane.

Secondary

All lanes : Goat polyclonal Secondary Antibody to Rabbit IgG - H&L (HRP), pre-adsorbed at 1/3000 dilution

Developed using the ECL technique.

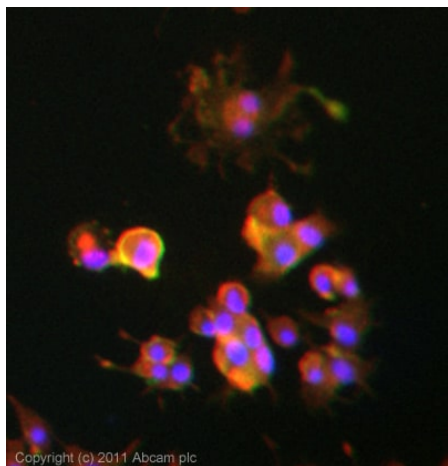
Performed under reducing conditions.

Predicted band size: 35 kDa

Observed band size: 35 kDa

Additional bands at: 48 kDa. We are unsure as to the identity of these extra bands.

Exposure time: 1 minute



Immunocytochemistry/ Immunofluorescence - Anti-Syntaxin antibody [STX01 (HPC-1)] (ab3265)

ICC/IF image of ab3265 stained PC12 cells. The cells were 4% formaldehyde fixed (10 min) and then incubated in 1%BSA / 10% normal goat serum / 0.3M glycine in 0.1% PBS-Tween for 1h to permeabilise the cells and block non-specific protein-protein interactions. The cells were then incubated with the antibody (ab3265, 1µg/ml) overnight at +4°C. The secondary antibody (green) was Alexa Fluor® 488 goat anti-mouse IgG (H+L) used at a 1/1000 dilution for 1h. Alexa Fluor® 594 WGA was used to label plasma membranes (red) at a 1/200 dilution for 1h. DAPI was used to stain the cell nuclei (blue) at a concentration of 1.43µM.

Please note: All products are "FOR RESEARCH USE ONLY. NOT FOR USE IN DIAGNOSTIC PROCEDURES"

Our Abpromise to you: Quality guaranteed and expert technical support

- Replacement or refund for products not performing as stated on the datasheet
- Valid for 12 months from date of delivery
- Response to your inquiry within 24 hours
- We provide support in Chinese, English, French, German, Japanese and Spanish
- Extensive multi-media technical resources to help you
- We investigate all quality concerns to ensure our products perform to the highest standards

If the product does not perform as described on this datasheet, we will offer a refund or replacement. For full details of the Abpromise, please visit <https://www.abcam.co.jp/abpromise> or contact our technical team.

Terms and conditions

- Guarantee only valid for products bought direct from Abcam or one of our authorized distributors