


### Anti-Syntaxin 1a antibody ab41453

★★★★★ 6 Abreviews 17 References 画像数 4

#### 製品の概要

製品名	Anti-Syntaxin 1a antibody
製品の詳細	Rabbit polyclonal to Syntaxin 1a
由来種	Rabbit
アプリケーション	適用あり: IP, ICC/IF, WB
種交差性	交差種: Mouse, Rat, Human 交差が予測される動物種: Sheep, Cow, Macaque monkey, Orangutan 
免疫原	Synthetic peptide corresponding to Rat Syntaxin 1a aa 1-100 conjugated to keyhole limpet haemocyanin. (Peptide available as <a href="#">ab41452</a> )
ポジティブ・コントロール	ICC/IF: primary hippocampal rat neurons/glia, DIV14. cells, and PC12 cells. WB: Mouse Brain, Rat Brain, Human Brain tissue lysates. IP: Mouse Brain
特記事項	<p>The Life Science industry has been in the grips of a reproducibility crisis for a number of years. Abcam is leading the way in addressing this with our range of recombinant monoclonal antibodies and knockout edited cell lines for gold-standard validation. Please check that this product meets your needs before purchasing.</p> <p>If you have any questions, special requirements or concerns, please send us an inquiry and/or contact our Support team ahead of purchase. Recommended alternatives for this product can be found below, along with publications, customer reviews and Q&amp;As</p>

#### 製品の特性

製品の状態	Liquid
保存方法	Shipped at 4°C. Store at +4°C short term (1-2 weeks). Upon delivery aliquot. Store at -20°C or -80°C. Avoid freeze / thaw cycle.
バッファー	pH: 7.40 Preservative: 0.02% Sodium azide Constituent: PBS
	Batches of this product that have a concentration < 1mg/ml may have BSA added as a stabilising agent. If you would like information about the formulation of a specific lot, please contact our scientific support team who will be happy to help.

精製度	Immunogen affinity purified
ポリ/モノ	ポリクローナル
アイソタイプ	IgG

アプリケーション

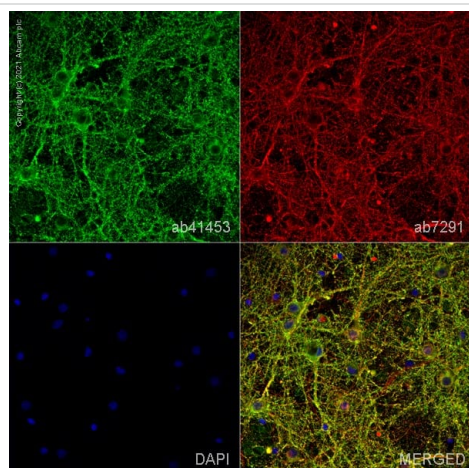
The Abpromise guarantee      **Abpromise保証は、次のテスト済みアプリケーションにおけるab41453の使用に適用されます**  
 アプリケーションノートには、推奨の開始希釈率がありますが、適切な希釈率につきましてはご検討ください。

アプリケーション	Abreviews	特記事項
IP	★★★★★ (1)	Use a concentration of 5 µg/ml.
ICC/IF		Use a concentration of 1 - 5 µg/ml.
WB	★★★★★ (2)	Use a concentration of 1 µg/ml. Detects a band of approximately 33 kDa (predicted molecular weight: 33 kDa).

ターゲット情報

機能	Potentially involved in docking of synaptic vesicles at presynaptic active zones. May play a critical role in neurotransmitter exocytosis. May mediate Ca(2+)-regulation of exocytosis acrosomal reaction in sperm.
組織特異性	Isoform 1 is highly expressed in embryonic spinal chord and ganglia and in adult cerebellum and cerebral cortex. Isoform 2 is expressed in heart, liver, fat, skeletal muscle, kidney and brain.
関連疾患	Note=STX1A is located in the Williams-Beuren syndrome (WBS) critical region. WBS results from a hemizygous deletion of several genes on chromosome 7q11.23, thought to arise as a consequence of unequal crossing over between highly homologous low-copy repeat sequences flanking the deleted region.
配列類似性	Belongs to the syntaxin family. Contains 1 t-SNARE coiled-coil homology domain.
細胞内局在	Secreted and Cytoplasmic vesicle > secretory vesicle > synaptic vesicle membrane. Cell junction > synapse > synaptosome.

画像

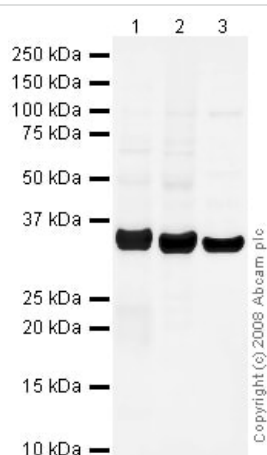


Immunocytochemistry/ Immunofluorescence - Anti-Syntaxin 1a antibody (ab41453)

ab41453 staining Syntaxin 1a in primary hippocampal rat neurons/glia, (obtained from Neuromics, cat. no. PC35101), DIV14. cells. The cells were fixed with 100% methanol (5 min), permeabilized with 0.1% PBS-Tween for 5 minutes and then blocked with 1% BSA/10% normal goat serum/0.3M glycine in 0.1% PBS-Tween for 1h. The cells were then incubated overnight at 4°C with ab41453 at 5µg/ml and **ab7291**, Mouse monoclonal [DM1A] to alpha Tubulin - Loading Control. Cells were then incubated with **ab150081**, Goat polyclonal Secondary Antibody to Rabbit IgG - H&L (Alexa Fluor® 488), pre-adsorbed at 1/1000 dilution (shown in green) and **ab150080**, Goat polyclonal Secondary Antibody to Rabbit IgG - H&L (Alexa Fluor® 594) at 1/1000 dilution (shown in pseudocolour red). Nuclear DNA was labelled with DAPI (shown in blue).

Also suitable in cells fixed with 4% paraformaldehyde (10 min).

Image was acquired with a high-content analyser (Operetta CLS, Perkin Elmer) and a maximum intensity projection of confocal sections is shown.



Western blot - Anti-Syntaxin 1a antibody (ab41453)

**All lanes** : Anti-Syntaxin 1a antibody (ab41453) at 1 µg/ml

**Lane 1** : Human brain tissue lysate - total protein (**ab29466**)

**Lane 2** : Brain (Mouse) Mouse Tissue Lysate

**Lane 3** : Brain (Rat) Rat Tissue Lysate

Lysates/proteins at 10 µg per lane.

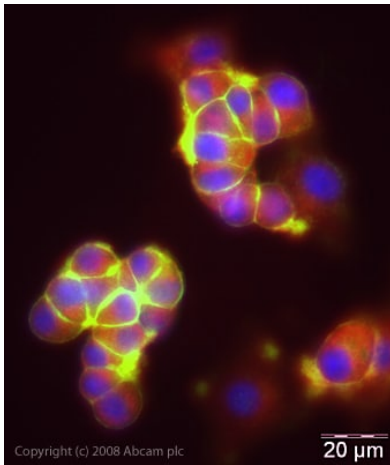
### Secondary

**All lanes** : IRDye 680 Conjugated Goat Anti-Rabbit IgG (H+L) at 1/10000 dilution

Performed under reducing conditions.

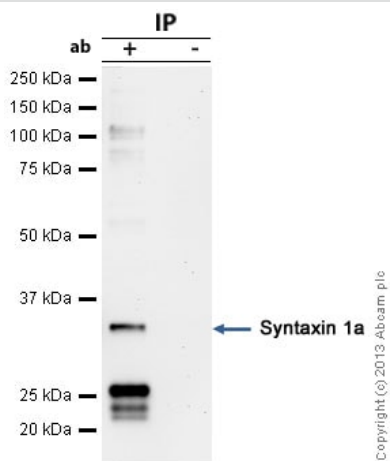
**Predicted band size:** 33 kDa

**Observed band size:** 33 kDa



Immunocytochemistry/ Immunofluorescence - Anti-Syntaxin 1a antibody (ab41453)

ICC/IF image of ab41453 stained rat PC12 cells. The cells were methanol fixed (5 min), permeabilised in PBS-T (20 min) and incubated with the antibody (ab41453, 1µg/ml) for 1h at room temperature. 1%BSA / 10% normal goat serum / 0.3M glycine was used to block non-specific protein-protein interactions. The secondary antibody (green) was Alexa Fluor® 488 goat anti-rabbit IgG (H+L) used at a 1/1000 dilution for 1h. Alexa Fluor® 594 WGA was used to label plasma membranes (red). DAPI was used to stain the cell nuclei (blue).



Immunoprecipitation - Anti-Syntaxin 1a antibody (ab41453)

Syntaxin 1a was immunoprecipitated using 0.5mg Mouse Brain tissue lysate, 5µg of Rabbit polyclonal to Syntaxin 1a and 50µl of protein G magnetic beads (+). No antibody was added to the control (-).

The antibody was incubated under agitation with Protein G beads for 10min, Mouse Brain tissue lysate lysate diluted in RIPA buffer was added to each sample and incubated for a further 10min under agitation.

Proteins were eluted by addition of 40µl SDS loading buffer and incubated for 10min at 70°C; 10µl of each sample was separated on a SDS PAGE gel, transferred to a nitrocellulose membrane, blocked with 5% BSA and probed with ab41453.

Secondary: Mouse monoclonal [SB62a] Secondary Antibody to Rabbit IgG light chain (HRP) ([ab99697](#)).

Band: 33kDa, non specific band - 25kDa: We are unsure as to the identity of this extra band; Syntaxin 1a

**Please note:** All products are "FOR RESEARCH USE ONLY. NOT FOR USE IN DIAGNOSTIC PROCEDURES"

## Our Abpromise to you: Quality guaranteed and expert technical support

- Replacement or refund for products not performing as stated on the datasheet
- Valid for 12 months from date of delivery
- Response to your inquiry within 24 hours
- We provide support in Chinese, English, French, German, Japanese and Spanish
- Extensive multi-media technical resources to help you

- We investigate all quality concerns to ensure our products perform to the highest standards

If the product does not perform as described on this datasheet, we will offer a refund or replacement. For full details of the Abpromise, please visit <https://www.abcam.co.jp/abpromise> or contact our technical team.

### **Terms and conditions**

---

- Guarantee only valid for products bought direct from Abcam or one of our authorized distributors