

Anti-Syndecan-1 antibody [B-A38] ab34164

★★★★★ [10 Abreviews](#) [49 References](#) [画像数 1](#)

製品の概要

製品名	Anti-Syndecan-1 antibody [B-A38]
製品の詳細	Mouse monoclonal [B-A38] to Syndecan-1
由来種	Mouse
アプリケーション	適用あり: Flow Cyt
種交差性	交差種: Human
免疫原	Tissue, cells or virus corresponding to Syndecan-1. U266 cell line.
ポジティブ・コントロール	Bone Marrow
特記事項	<p>This antibody stains all plasma cells and plasma cell lines. No staining of other leucocytes is seen in peripheral blood or bone marrow, although some ALL cell lines express the antigen weakly. Some staining of epithelial and endothelial cells may be seen in immunohistology.</p> <p>The Life Science industry has been in the grips of a reproducibility crisis for a number of years. Abcam is leading the way in addressing this with our range of recombinant monoclonal antibodies and knockout edited cell lines for gold-standard validation. Please check that this product meets your needs before purchasing.</p> <p>If you have any questions, special requirements or concerns, please send us an inquiry and/or contact our Support team ahead of purchase. Recommended alternatives for this product can be found below, along with publications, customer reviews and Q&As</p>

製品の特性

製品の状態	Liquid
保存方法	Shipped at 4°C. Store at +4°C short term (1-2 weeks). Upon delivery aliquot. Store at -20°C long term. Avoid freeze / thaw cycle.
バッファー	Preservative: 0.09% Sodium azide Constituents: PBS, 1% BSA
精製度	Ion Exchange Chromatography
特記事項(精製)	Purified IgG prepared by ion exchange chromatography
一次抗体 備考	This antibody stains all plasma cells and plasma cell lines. No staining of other leucocytes is seen in peripheral blood or bone marrow, although some ALL cell lines express the antigen weakly. Some staining of epithelial and endothelial cells may be seen in immunohistology.

ポリ/モノ	モノクローナル
クローン名	B-A38
ミエローマ	x63-Ag8.653
アイソタイプ	IgG1

アプリケーション

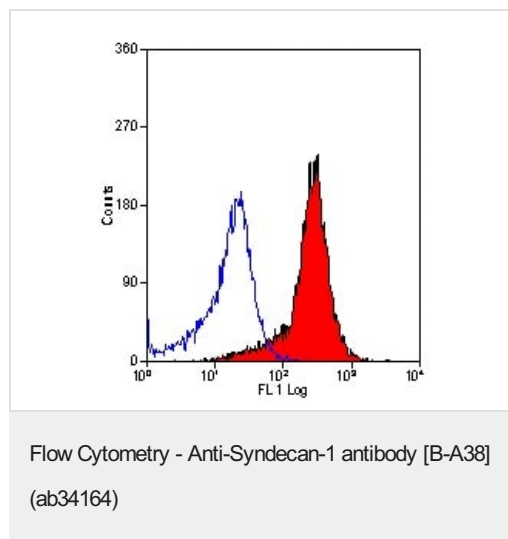
The Abpromise guarantee Abpromise保証は、次のテスト済みアプリケーションにおけるab34164の使用に適用されます
 アプリケーションノートには、推奨の開始希釈率がありますが、適切な希釈率につきましてはご確認ください。

アプリケーション	Abreviews	特記事項
Flow Cyt		Use 10µl for 10 ⁶ cells. ab170190 - Mouse monoclonal IgG1, is suitable for use as an isotype control with this antibody.

ターゲット情報

機能	Cell surface proteoglycan that bears both heparan sulfate and chondroitin sulfate and that links the cytoskeleton to the interstitial matrix.
配列類似性	Belongs to the syndecan proteoglycan family.
細胞内局在	Membrane.

画像



Flow cytometry analysis of U266 cell line using ab34164

Please note: All products are "FOR RESEARCH USE ONLY. NOT FOR USE IN DIAGNOSTIC PROCEDURES"

Our Abpromise to you: Quality guaranteed and expert technical support

- Replacement or refund for products not performing as stated on the datasheet
- Valid for 12 months from date of delivery
- Response to your inquiry within 24 hours

- We provide support in Chinese, English, French, German, Japanese and Spanish
- Extensive multi-media technical resources to help you
- We investigate all quality concerns to ensure our products perform to the highest standards

If the product does not perform as described on this datasheet, we will offer a refund or replacement. For full details of the Abpromise, please visit <https://www.abcam.co.jp/abpromise> or contact our technical team.

Terms and conditions

- Guarantee only valid for products bought direct from Abcam or one of our authorized distributors