


Anti-Synaptotagmin VII antibody ab106618

1 References [画像数 1](#)

製品の概要

製品名	Anti-Synaptotagmin VII antibody
製品の詳細	Rabbit polyclonal to Synaptotagmin VII
由来種	Rabbit
アプリケーション	適用あり: WB
種交差性	交差種: Mouse, Rat 交差が予測される動物種: Rabbit, Human, Chimpanzee, Macaque monkey, Gorilla, Orangutan 
免疫原	Synthetic peptide corresponding to Human Synaptotagmin VII aa 50-150 conjugated to keyhole limpet haemocyanin. (Peptide available as ab154624)
ポジティブ・コントロール	WB: Mouse and Rat Brain tissue lysates
特記事項	<p>The Life Science industry has been in the grips of a reproducibility crisis for a number of years. Abcam is leading the way in addressing this with our range of recombinant monoclonal antibodies and knockout edited cell lines for gold-standard validation. Please check that this product meets your needs before purchasing.</p> <p>If you have any questions, special requirements or concerns, please send us an inquiry and/or contact our Support team ahead of purchase. Recommended alternatives for this product can be found below, along with publications, customer reviews and Q&As</p>

製品の特性

製品の状態	Liquid
保存方法	Shipped at 4°C. Store at +4°C short term (1-2 weeks). Upon delivery aliquot. Store at -20°C or -80°C. Avoid freeze / thaw cycle.
バッファー	pH: 7.40 Preservative: 0.02% Sodium azide Constituent: PBS
	Batches of this product that have a concentration < 1mg/ml may have BSA added as a stabilising agent. If you would like information about the formulation of a specific lot, please contact our scientific support team who will be happy to help.

精製度	Immunogen affinity purified
ポリ/モノ	ポリクローナル
アイソタイプ	IgG

アプリケーション

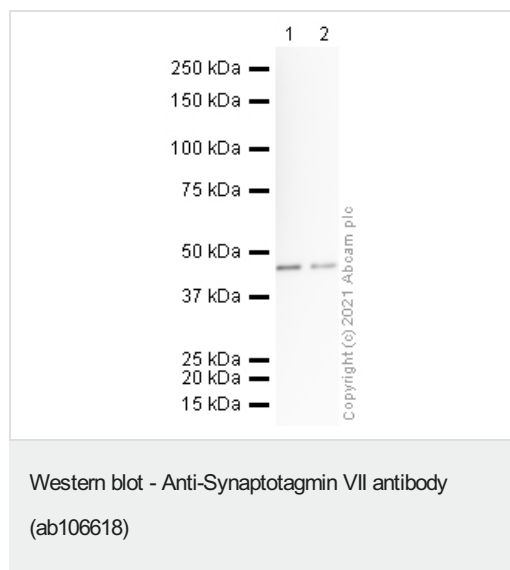
The Abpromise guarantee **Abpromise保証は、**次のテスト済みアプリケーションにおけるab106618の使用に適用されます
アプリケーションノートには、推奨の開始希釈率がありますが、適切な希釈率につきましてはご確認ください。

アプリケーション	Abreviews	特記事項
WB		Use a concentration of 1 µg/ml. Detects a band of approximately 45 kDa (predicted molecular weight: 45 kDa). Abcam recommends using milk as the blocking agent - 3%.

ターゲット情報

機能	May be involved in Ca(2+)-dependent exocytosis of secretory vesicles through Ca(2+) and phospholipid binding to the C2 domain or may serve as Ca(2+) sensors in the process of vesicular trafficking and exocytosis.
組織特異性	Expressed in a variety of adult and fetal tissues.
配列類似性	Belongs to the synaptotagmin family. Contains 2 C2 domains.
ドメイン	The second C2 domain/C2B is responsible for SYNCRIP binding.
細胞内局在	Cytoplasmic vesicle > secretory vesicle > synaptic vesicle membrane.

画像



All lanes : Anti-Synaptotagmin VII antibody (ab106618) at 1 µg/ml

Lane 1 : Mouse Brain Tissue lysate

Lane 2 : Rat Brain Tissue lysate

Lysates/proteins at 10 µg per lane.

Secondary

All lanes : Goat polyclonal to Rabbit IgG - H&L - Pre-Adsorbed (HRP) at 1/50000 dilution

Predicted band size: 45 kDa

Observed band size: 45 kDa

Exposure time: 8 minutes

Blocking buffer: 3% Milk

Gel type: MOPS

Please note: All products are "FOR RESEARCH USE ONLY. NOT FOR USE IN DIAGNOSTIC PROCEDURES"

Our Abpromise to you: Quality guaranteed and expert technical support

- Replacement or refund for products not performing as stated on the datasheet
- Valid for 12 months from date of delivery
- Response to your inquiry within 24 hours
- We provide support in Chinese, English, French, German, Japanese and Spanish
- Extensive multi-media technical resources to help you
- We investigate all quality concerns to ensure our products perform to the highest standards

If the product does not perform as described on this datasheet, we will offer a refund or replacement. For full details of the Abpromise, please visit <https://www.abcam.co.jp/abpromise> or contact our technical team.

Terms and conditions

- Guarantee only valid for products bought direct from Abcam or one of our authorized distributors