


Anti-Synaptopodin antibody ab117702

4 References [画像数 2](#)

製品の概要

製品名	Anti-Synaptopodin antibody
製品の詳細	Rabbit polyclonal to Synaptopodin
由来種	Rabbit
アプリケーション	適用あり: IHC-P
種交差性	交差種: Human 交差が予測される動物種: Mouse, Rat 
免疫原	Synthetic peptide from the C terminal region of Human Synaptopodin, conjugated to KLH.
ポジティブ・コントロール	Human perineural or perivascular process.
特記事項	<p>The Life Science industry has been in the grips of a reproducibility crisis for a number of years. Abcam is leading the way in addressing this with our range of recombinant monoclonal antibodies and knockout edited cell lines for gold-standard validation. Please check that this product meets your needs before purchasing.</p> <p>If you have any questions, special requirements or concerns, please send us an inquiry and/or contact our Support team ahead of purchase. Recommended alternatives for this product can be found below, along with publications, customer reviews and Q&As</p>

製品の特性

製品の状態	Liquid
保存方法	Shipped at 4°C. Store at +4°C short term (1-2 weeks). Store at -20°C or -80°C. Avoid freeze / thaw cycle.
バッファー	pH: 7.4 Preservative: 0.02% Sodium azide Constituent: 99% PBS
精製度	Immunogen affinity purified
ポリ/モノ	ポリクローナル
アイソタイプ	IgG

アプリケーション

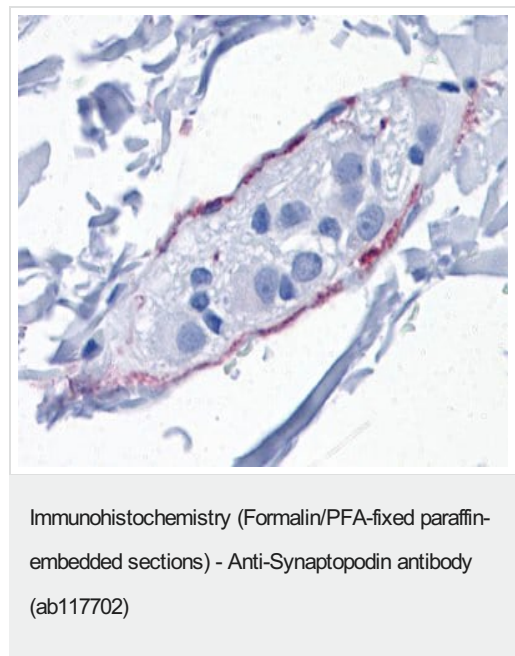
The Abpromise guarantee Abpromise保証は、 次のテスト済みアプリケーションにおけるab117702の使用に適用されます
 アプリケーションノートには、推奨の開始希釈率がありますが、適切な希釈率につきましてはご検討ください。

アプリケーション	Abreviews	特記事項
IHC-P		Use a concentration of 5 µg/ml.

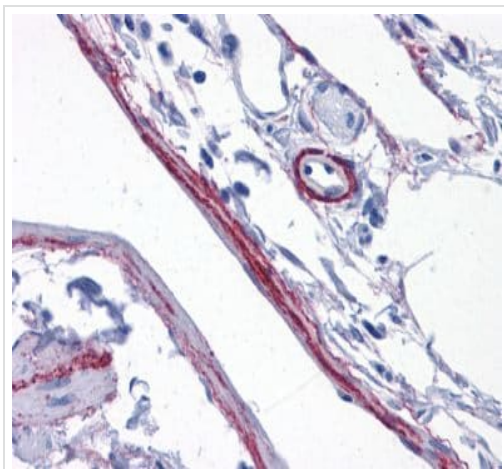
ターゲット情報

機能	Actin-associated protein that may play a role in modulating actin-based shape and motility of dendritic spines and renal podocyte foot processes. Seems to be essential for the formation of spine apparatuses in spines of telencephalic neurons, which is involved in synaptic plasticity.
組織特異性	Expressed in cerebral cortex.
配列類似性	Belongs to the synaptopodin family.
翻訳後修飾	O-glycosylated. Isoform 2 is phosphorylated on Ser-826, Thr-836, Ser-840 and Ser-871.
細胞内局在	Cytoplasm > cytoskeleton. Cell junction > tight junction. Perikaryon. Cell projection > dendritic spine. Cell junction > synapse > postsynaptic cell membrane > postsynaptic density. Cell junction > synapse. Localized at the tight junction of cells. In brain, localized to the postsynaptic densities and in the perikarya. Associated with dendritic spines of a subset of synapses.

画像



Human Perineural Processes, Formalin-Fixed, Paraffin-Embedded tissue, stained with ab117702 at 5µg/ml.



Human Perivascular Processes, Formalin-Fixed, Paraffin-Embedded tissue, stained with ab117702 at 5µg/ml.

Immunohistochemistry (Formalin/PFA-fixed paraffin-embedded sections) - Anti-Synaptopodin antibody (ab117702)

Please note: All products are "FOR RESEARCH USE ONLY. NOT FOR USE IN DIAGNOSTIC PROCEDURES"

Our Abpromise to you: Quality guaranteed and expert technical support

- Replacement or refund for products not performing as stated on the datasheet
- Valid for 12 months from date of delivery
- Response to your inquiry within 24 hours
- We provide support in Chinese, English, French, German, Japanese and Spanish
- Extensive multi-media technical resources to help you
- We investigate all quality concerns to ensure our products perform to the highest standards

If the product does not perform as described on this datasheet, we will offer a refund or replacement. For full details of the Abpromise, please visit <https://www.abcam.co.jp/abpromise> or contact our technical team.

Terms and conditions

- Guarantee only valid for products bought direct from Abcam or one of our authorized distributors