

### Anti-Synaptophysin antibody [SY38] ab8049

★★★★★ [15 Abreviews](#) [199 References](#) [画像数 5](#)

#### 製品の概要

製品名	Anti-Synaptophysin antibody [SY38]
製品の詳細	Mouse monoclonal [SY38] to Synaptophysin
由来種	Mouse
アプリケーション	<b>適用あり:</b> WB, ICC/IF, IHC-Fr, Flow Cyt, IHC-P
種交差性	<b>交差種:</b> Mouse, Rat, Hamster, Cow, Human
免疫原	Full length native protein (purified) corresponding to Bovine Synaptophysin. Synaptophysin from presynaptic vesicles, prepared from bovine brain. Database link: <a href="#">P20488</a>
ポジティブ・コントロール	Adrenal pheochromocytoma and pancreatic islet cell neoplasm
特記事項	<p>The Life Science industry has been in the grips of a reproducibility crisis for a number of years. Abcam is leading the way in addressing this with our range of recombinant monoclonal antibodies and knockout edited cell lines for gold-standard validation. Please check that this product meets your needs before purchasing.</p> <p>If you have any questions, special requirements or concerns, please send us an inquiry and/or contact our Support team ahead of purchase. Recommended alternatives for this product can be found below, along with publications, customer reviews and Q&amp;As</p>

#### 製品の特性

製品の状態	Liquid
保存方法	Shipped at 4°C. Store at +4°C short term (1-2 weeks). Upon delivery aliquot. Store at +4°C.
バッファー	pH: 7.3 Preservative: 0.09% Sodium azide Constituents: 0.5% BSA, PBS
精製度	Protein A purified
ポリ/モノ	モノクローナル
クローン名	SY38
アイソタイプ	IgG1

#### アプリケーション

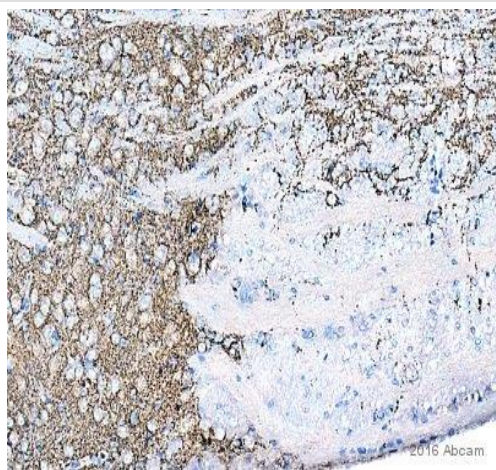
**The Abpromise guarantee**      **Abpromise保証は、**次のテスト済みアプリケーションにおけるab8049の使用に適用されます  
 アプリケーションノートには、推奨の開始希釈率がありますが、適切な希釈率につきましてはご確認ください。

アプリケーション	Abreviews	特記事項
WB	★★★★★ (2)	1/500. Detects a band of approximately 38 kDa (predicted molecular weight: 34 kDa).
ICC/IF	★★★★★ (2)	Use at an assay dependent concentration.
IHC-Fr	★★★★★ (1)	Use at an assay dependent concentration.
Flow Cyt	★★★★★ (1)	1/20. <b>ab170190</b> - Mouse monoclonal IgG1, is suitable for use as an isotype control with this antibody.
IHC-P	★★★★★ (6)	Use at an assay dependent concentration.

## ターゲット情報

機能	Possibly involved in structural functions as organizing other membrane components or in targeting the vesicles to the plasma membrane. Involved in the regulation of short-term and long-term synaptic plasticity.
組織特異性	Characteristic of a type of small (30-80 nm) neurosecretory vesicles, including presynaptic vesicles, but also vesicles of various neuroendocrine cells of both neuronal and epithelial phenotype.
関連疾患	Mental retardation, X-linked, SYP-related
配列類似性	Belongs to the synaptophysin/synaptobrevin family. Contains 1 MARVEL domain.
ドメイン	The calcium-binding activity is thought to be localized in the cytoplasmic tail of the protein.
翻訳後修飾	Ubiquitinated; mediated by SIAH1 or SIAH2 and leading to its subsequent proteasomal degradation.
細胞内局在	Cytoplasmic vesicle, secretory vesicle, synaptic vesicle membrane. Cell junction, synapse, synaptosome.

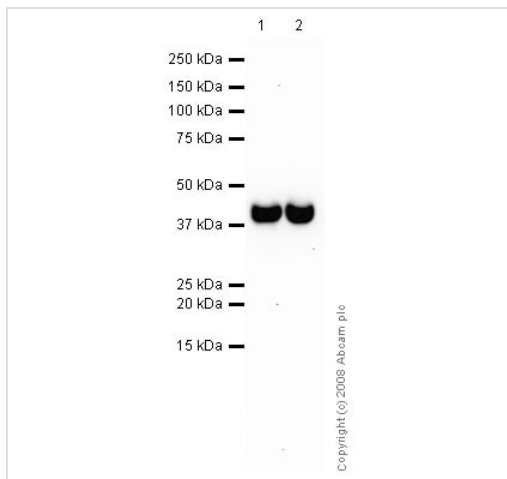
## 画像



Immunohistochemistry (Formalin/PFA-fixed paraffin-embedded sections) - Anti-Synaptophysin antibody [SY38] (ab8049)

This image is courtesy of an Abreview provided by Carl Hobbs

ab8049 staining Synaptophysin in Mouse brain tissue sections by Immunohistochemistry (IHC-P - paraformaldehyde-fixed, paraffin-embedded sections). Tissue was fixed with formaldehyde and blocked with 2% BSA for 10 minutes at 21°C; antigen retrieval was by heat mediation in a citric acid. Samples were incubated with primary antibody (1/100) for 16 hours at 21°C. A Biotin-conjugated Goat anti-mouse IgG polyclonal (1/300) was used as the secondary antibody.



Western blot - Anti-Synaptophysin antibody [SY38] (ab8049)

**All lanes :** Anti-Synaptophysin antibody [SY38] (ab8049) at 1/500 dilution

**Lane 1 :** Human brain tissue lysate - total protein ([ab29466](#))

**Lane 2 :** Brain (Mouse) Tissue Lysate

Lysates/proteins at 10 µg per lane.

### Secondary

**All lanes :** Goat polyclonal to Mouse IgG - H&L - Pre-Adsorbed at 1/3000 dilution

**Predicted band size:** 34 kDa

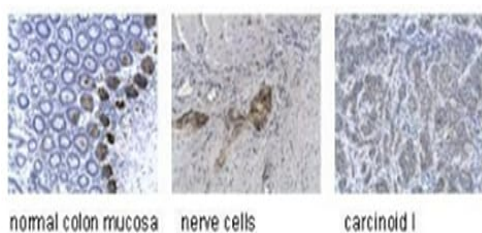
**Observed band size:** 38 kDa



Immunohistochemistry (Formalin/PFA-fixed paraffin-embedded sections) - Anti-Synaptophysin antibody [SY38] (ab8049)

This image is courtesy of an Abreview provided by Carl Hobbs.

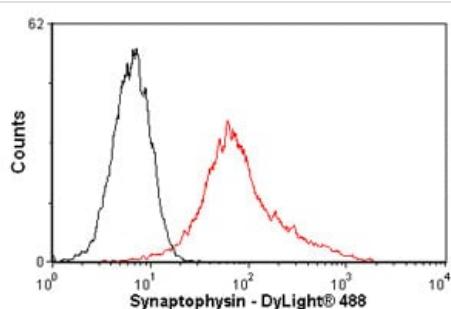
ab8049 staining MAFA in human colon tissue sections by Immunohistochemistry (IHC-P - paraformaldehyde-fixed, paraffin-embedded sections). Tissue was fixed with formaldehyde and blocked with 1% BSA for 10 minutes at 21°C; antigen retrieval was by heat mediation in citric acid. Samples were incubated with primary antibody (1/100 in TBS/BSA/azide) for 16 hours at 21°C. A Biotin-conjugated goat anti-mouse IgG polyclonal (1/300) was used as the secondary antibody.



Immunohistochemistry (Formalin/PFA-fixed paraffin-embedded sections) - Anti-Synaptophysin antibody [SY38] (ab8049)

The pictures show immunohistochemical staining of normal mucosa and neuroendocrine tumour of the small intestine. The antibody (ab8049) stains positive in a 1:10 dilution in nerve cells of the colon as well as some cells in normal colon mucosa and some neuroendocrine tumors of the digestive tract. Staining protocol: Mouse monoclonal to Synaptophysin (ab8049), diluted 1:10 in PBS plus BSA, 60 min at room temperature, secondary antibody: HRP solution with anti mouse polyclonal antibodies, 30min. DAB staining 10 min; Hematoxylin 30 sec.

These images were kindly supplied as part of the review submitted by Karin Birkenkamp-Demtroeder.



Flow Cytometry - Anti-Synaptophysin antibody [SY38] (ab8049)

Overlay histogram showing PC12 cells stained with ab8049 (red line). The cells were fixed with methanol (5 min) and then permeabilized with 0.1% PBS-Tween for 20 min. The cells were then incubated in 1x PBS / 10% normal goat serum / 0.3M glycine to block non-specific protein-protein interactions followed by the antibody (ab8049, 1/20 dilution) for 30 min at 22°C. The secondary antibody used was DyLight® 488 goat anti-mouse IgG (H+L) (**ab96879**) at 1/500 dilution for 30 min at 22°C. Isotype control antibody (black line) was mouse IgG1 [ICIGG1] (**ab91353**, 2µg/1x10<sup>6</sup> cells) used under the same conditions. Acquisition of >5,000 events was performed. This antibody gave a decreased

signal in PC12 cells fixed with 4% paraformaldehyde (10 min)/permeabilized with 0.1% PBS-Tween used under the same conditions.

**Please note:** All products are "FOR RESEARCH USE ONLY. NOT FOR USE IN DIAGNOSTIC PROCEDURES"

#### **Our Abpromise to you: Quality guaranteed and expert technical support**

---

- Replacement or refund for products not performing as stated on the datasheet
- Valid for 12 months from date of delivery
- Response to your inquiry within 24 hours
  
- We provide support in Chinese, English, French, German, Japanese and Spanish
- Extensive multi-media technical resources to help you
- We investigate all quality concerns to ensure our products perform to the highest standards

If the product does not perform as described on this datasheet, we will offer a refund or replacement. For full details of the Abpromise, please visit <https://www.abcam.co.jp/abpromise> or contact our technical team.

#### **Terms and conditions**

---

- Guarantee only valid for products bought direct from Abcam or one of our authorized distributors