




Anti-Synaptophysin antibody ab32594

★★★★★ [13 Abreviews](#) [54 References](#) [画像数 9](#)

製品の概要

製品名	Anti-Synaptophysin antibody
製品の詳細	Rabbit polyclonal to Synaptophysin
由来種	Rabbit
アプリケーション	適用あり: WB, ICC/IF
種交差性	交差種: Rat 交差が予測される動物種: Human 
免疫原	Synthetic peptide: GPGGYGPQDSYGPQGGYQPD , corresponding to amino acids 253-272 of Rat Synaptophysin  Run BLAST with  Run BLAST with
ポジティブ・コントロール	WB: Mouse and rat brain tissue lysates. ICC/IF: rat hippocampal neurons
特記事項	<p>The Life Science industry has been in the grips of a reproducibility crisis for a number of years. Abcam is leading the way in addressing this with our range of recombinant monoclonal antibodies and knockout edited cell lines for gold-standard validation. Please check that this product meets your needs before purchasing.</p> <p>If you have any questions, special requirements or concerns, please send us an inquiry and/or contact our Support team ahead of purchase. Recommended alternatives for this product can be found below, along with publications, customer reviews and Q&As</p>

製品の特性

製品の状態	Liquid
保存方法	Shipped at 4°C. Upon delivery aliquot and store at -20°C or -80°C. Avoid repeated freeze / thaw cycles.
バッファー	Preservative: 0.05% Sodium azide Constituents: PBS, 0.1% BSA
精製度	Immunogen affinity purified
ポリ/モノ	ポリクローナル
アイソタイプ	IgG

アプリケーション

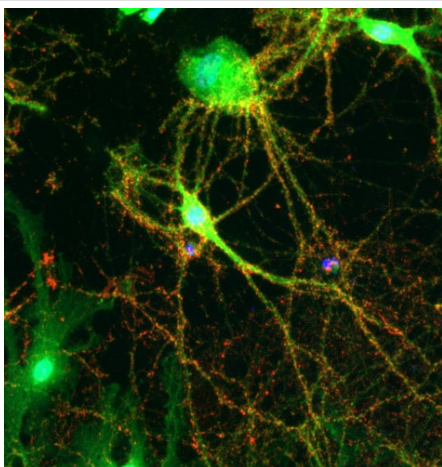
The Abpromise guarantee Abpromise保証は、次のテスト済みアプリケーションにおけるab32594の使用に適用されます
アプリケーションノートには、推奨の開始希釈率がありますが、適切な希釈率につきましてはご検討ください。

アプリケーション	Abreviews	特記事項
WB	★★★★★ (5)	1/5000. Detects a band of approximately 33.8 kDa (predicted molecular weight: 34 kDa).
ICC/IF	★★★★★ (1)	Use at an assay dependent concentration.

ターゲット情報

機能	Possibly involved in structural functions as organizing other membrane components or in targeting the vesicles to the plasma membrane. Involved in the regulation of short-term and long-term synaptic plasticity.
組織特異性	Characteristic of a type of small (30-80 nm) neurosecretory vesicles, including presynaptic vesicles, but also vesicles of various neuroendocrine cells of both neuronal and epithelial phenotype.
関連疾患	Mental retardation, X-linked, SYP-related
配列類似性	Belongs to the synaptophysin/synaptobrevin family. Contains 1 MARVEL domain.
ドメイン	The calcium-binding activity is thought to be localized in the cytoplasmic tail of the protein.
翻訳後修飾	Ubiquitinated; mediated by SIAH1 or SIAH2 and leading to its subsequent proteasomal degradation.
細胞内局在	Cytoplasmic vesicle, secretory vesicle, synaptic vesicle membrane. Cell junction, synapse, synaptosome.

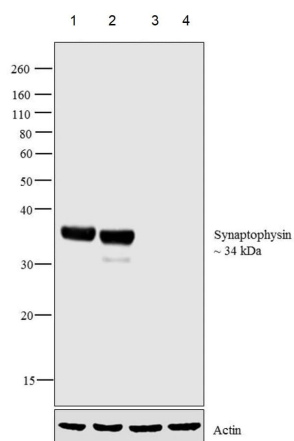
画像



Immunocytochemistry/ Immunofluorescence - Anti-Synaptophysin antibody (ab32594)

ab32594 labelling Synaptophysin by Immunocytochemistry/Immunofluorescence in rat hippocampal neurons. The cells were fixed with 1% formaldehyde in fume hood at room temperature for 10 minutes.

ab32594 is used at 1:1500 dilution and DyLight 649 Conjugated Goat anti-Rabbit IgG used as secondary antibody at 1:1500 dilution.



Western blot - Anti-Synaptophysin antibody (ab32594)

All lanes : Anti-Synaptophysin antibody (ab32594) at 1/1000 dilution

Lane 1 : Mouse brain tissue lysate

Lane 2 : Rat brain tissue lysate

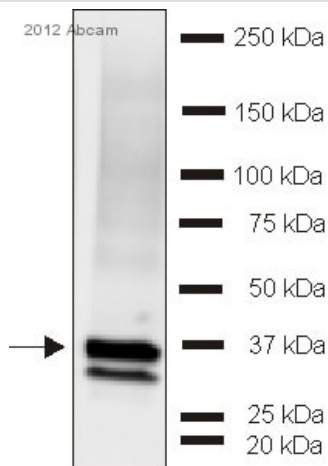
Lane 3 : Rat liver tissue lysate

Lane 4 : Rat kidney tissue lysate

Lysates/proteins at 30 µg per lane.

Predicted band size: 34 kDa

Western blot analysis was performed on tissue extracts (30 µg lysate). The blot was probed with ab32594 (1:1000 dilution) and detected by chemiluminescence using Goat anti-Rabbit IgG (H+L) Superclonal™ Secondary Antibody, HRP conjugate. A 34 kDa band corresponding to Synaptophysin was observed in Mouse Brain, Rat Brain and not observed in other tissues which are documented to be Synaptophysin negative.



Western blot - Anti-Synaptophysin antibody (ab32594)

This image is courtesy of an anonymous Abreview

Anti-Synaptophysin antibody (ab32594) at 1/1000 dilution + Apterionotus leptorhynchus brain tissue lysate at 50 µg

Secondary

AlexaFluor®488-conjugated goat anti-rabbit polyclonal IgG at 1/1000 dilution

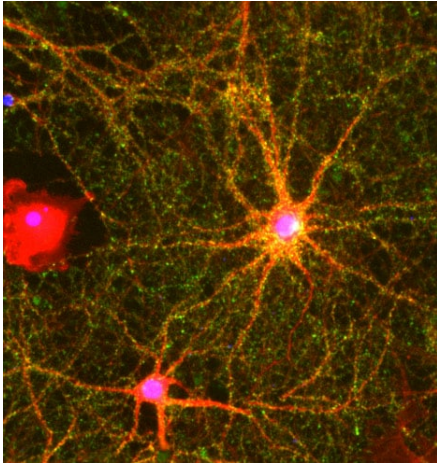
Developed using the ECL technique.

Performed under reducing conditions.

Predicted band size: 34 kDa

Observed band size: 33,35 kDa

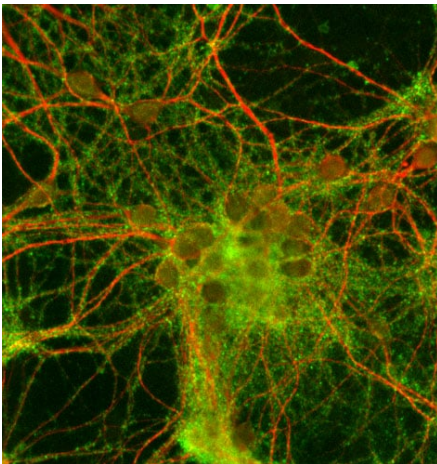
Exposure time: 7 minutes



Immunocytochemistry/ Immunofluorescence - Anti-Synaptophysin antibody (ab32594)

ab32594 labelling Synaptophysin by Immunocytochemistry/Immunofluorescence in rat hippocampal neurons. The cells were fixed with 1% formaldehyde in fume hood at room temperature for 10 minutes.

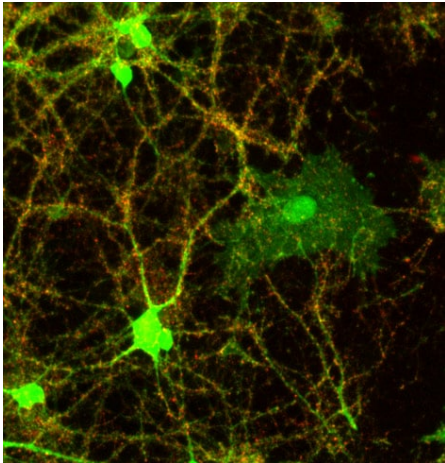
ab32594 is used at 1:1500 dilution and DyLight 649 Conjugated Goat anti-Rabbit IgG used as secondary antibody at 1:1500 dilution.



Immunocytochemistry/ Immunofluorescence - Anti-Synaptophysin antibody (ab32594)

ab32594 labelling Synaptophysin by Immunocytochemistry/Immunofluorescence in rat hippocampal neurons. The cells were fixed with 1% formaldehyde in fume hood at room temperature for 10 minutes.

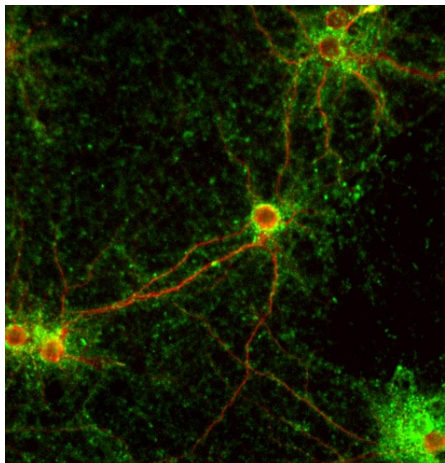
ab32594 is used at 1:1500 dilution and DyLight 649 Conjugated Goat anti-Rabbit IgG used as secondary antibody at 1:1500 dilution.



Immunocytochemistry/ Immunofluorescence - Anti-Synaptophysin antibody (ab32594)

ab32594 labelling Synaptophysin by Immunocytochemistry/Immunofluorescence in rat hippocampal neurons. The cells were fixed with 1% formaldehyde in fume hood at room temperature for 10 minutes.

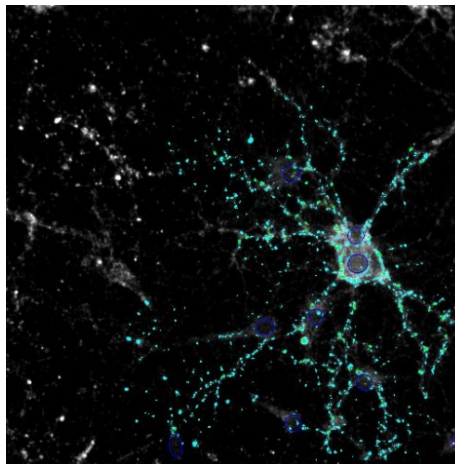
ab32594 is used at 1:1500 dilution and DyLight 649 Conjugated Goat anti-Rabbit IgG used as secondary antibody at 1:1500 dilution.



Immunocytochemistry/ Immunofluorescence - Anti-Synaptophysin antibody (ab32594)

ab32594 labelling Synaptophysin by Immunocytochemistry/Immunofluorescence in rat hippocampal neurons. The cells were fixed with 1% formaldehyde in fume hood at room temperature for 10 minutes.

ab32594 is used at 1:1500 dilution and DyLight 649 Conjugated Goat anti-Rabbit IgG used as secondary antibody at 1:1500 dilution.



Immunocytochemistry/ Immunofluorescence - Anti-Synaptophysin antibody (ab32594)

ab32594 labelling Synaptophysin by Immunocytochemistry/Immunofluorescence in rat hippocampal neurons. The cells were fixed with 1% formaldehyde in fume hood at room temperature for 10 minutes.

ab32594 is used at 1:1500 dilution and DyLight 649 Conjugated Goat anti-Rabbit IgG used as secondary antibody at 1:1500 dilution.



Western blot - Anti-Synaptophysin antibody (ab32594)

Anti-Synaptophysin antibody (ab32594) at 1/5000 dilution + Rat brain

Predicted band size: 34 kDa

Observed band size: 33.8 kDa

Please note: All products are "FOR RESEARCH USE ONLY. NOT FOR USE IN DIAGNOSTIC PROCEDURES"

Our Abpromise to you: Quality guaranteed and expert technical support

- Replacement or refund for products not performing as stated on the datasheet
- Valid for 12 months from date of delivery
- Response to your inquiry within 24 hours
- We provide support in Chinese, English, French, German, Japanese and Spanish
- Extensive multi-media technical resources to help you
- We investigate all quality concerns to ensure our products perform to the highest standards

If the product does not perform as described on this datasheet, we will offer a refund or replacement. For full details of the Abpromise, please visit <https://www.abcam.co.jp/abpromise> or contact our technical team.

Terms and conditions

- Guarantee only valid for products bought direct from Abcam or one of our authorized distributors