

# Anti-Synaptogyrin 3 antibody ab106460

## 1 References [画像数 1](#)

### 製品の概要

---

製品名	Anti-Synaptogyrin 3 antibody
製品の詳細	Rabbit polyclonal to Synaptogyrin 3
由来種	Rabbit
特異性	ab106460 does not cross-react with other Synaptogyrin family members
アプリケーション	<b>適用あり:</b> WB
種交差性	<b>交差種:</b> Mouse
免疫原	A 19 amino acid peptide from near the C terminal of Human Synaptogyrin 3 (NP_004200).
ポジティブ・コントロール	WB: Mouse brain tissue lysate
特記事項	<p>The Life Science industry has been in the grips of a reproducibility crisis for a number of years. Abcam is leading the way in addressing this with our range of recombinant monoclonal antibodies and knockout edited cell lines for gold-standard validation. Please check that this product meets your needs before purchasing.</p> <p>If you have any questions, special requirements or concerns, please send us an inquiry and/or contact our Support team ahead of purchase. Recommended alternatives for this product can be found below, along with publications, customer reviews and Q&amp;As</p>

### 製品の特性

---

製品の状態	Liquid
保存方法	Shipped at 4°C. Store at +4°C short term (1-2 weeks). Store at +4°C.
バッファー	pH: 7.2 Preservative: 0.02% Sodium azide Constituent: PBS
精製度	Immunogen affinity purified
ポリ/モノ	ポリクローナル
アイソタイプ	IgG

### アプリケーション

---

**Abpromise保証は、次のテスト済みアプリケーションにおけるab106460の使用に適用されます**

## The Abpromise guarantee

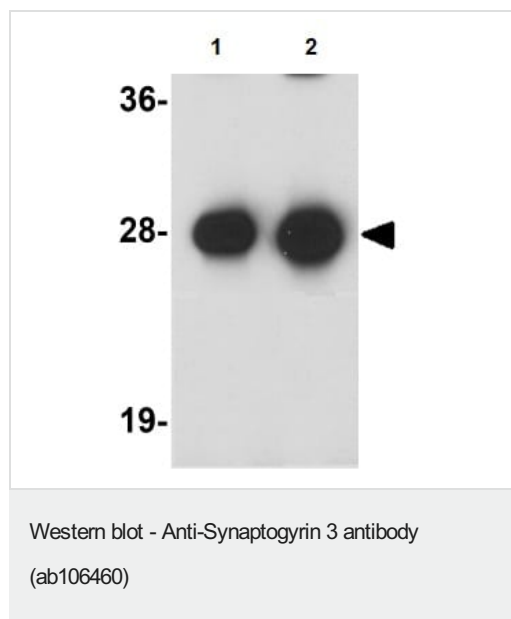
アプリケーションノートには、推奨の開始希釈率がありますが、適切な希釈率につきましてはご確認ください。

アプリケーション	Abreviews	特記事項
WB		Use a concentration of 1 - 2 µg/ml. Predicted molecular weight: 25 kDa.

## ターゲット情報

機能	Involved in the positive regulation of dopamine transporter activity. Probably facilitates the physical and functional interactions of the transporter with the dopamine vesicular storage system, allowing a more efficient loading of the vesicles with extracellular dopamine after release.
組織特異性	Expressed in brain and placenta.
配列類似性	Belongs to the synaptogyrin family. Contains 1 MARVEL domain.
細胞内局在	Membrane. Cytoplasmic vesicle > secretory vesicle > synaptic vesicle. Cell junction > synapse. Found at the neuromuscular synapses.

## 画像



**Lane 1 :** Anti-Synaptogyrin 3 antibody (ab106460) at 1 µg/ml

**Lane 2 :** Anti-Synaptogyrin 3 antibody (ab106460) at 2 µg/ml

**All lanes :** Mouse brain tissue lysate

Lysates/proteins at 15 µg per lane.

**Predicted band size:** 25 kDa

**Please note:** All products are "FOR RESEARCH USE ONLY. NOT FOR USE IN DIAGNOSTIC PROCEDURES"

## Our Abpromise to you: Quality guaranteed and expert technical support

- Replacement or refund for products not performing as stated on the datasheet
- Valid for 12 months from date of delivery
- Response to your inquiry within 24 hours
- We provide support in Chinese, English, French, German, Japanese and Spanish

- Extensive multi-media technical resources to help you
- We investigate all quality concerns to ensure our products perform to the highest standards

If the product does not perform as described on this datasheet, we will offer a refund or replacement. For full details of the Abpromise, please visit <https://www.abcam.co.jp/abpromise> or contact our technical team.

### **Terms and conditions**

---

- Guarantee only valid for products bought direct from Abcam or one of our authorized distributors