

Anti-Synapsin I (phospho S603) antibody ab13879

3 References [画像数 1](#)

製品の概要

製品名	Anti-Synapsin I (phospho S603) antibody
製品の詳細	Rabbit polyclonal to Synapsin I (phospho S603)
由来種	Rabbit
アプリケーション	適用あり: WB
免疫原	Synthetic peptide corresponding to Rat Synapsin I (phospho S603).
特記事項	<p>Aliquots may be taken without freeze/thawing due to the presence of 50% glycerol.</p> <p>The Life Science industry has been in the grips of a reproducibility crisis for a number of years. Abcam is leading the way in addressing this with our range of recombinant monoclonal antibodies and knockout edited cell lines for gold-standard validation. Please check that this product meets your needs before purchasing.</p> <p>If you have any questions, special requirements or concerns, please send us an inquiry and/or contact our Support team ahead of purchase. Recommended alternatives for this product can be found below, along with publications, customer reviews and Q&As</p>

製品の特性

製品の状態	Liquid
保存方法	Shipped at 4°C. Upon delivery aliquot and store at -20°C or -80°C. Avoid repeated freeze / thaw cycles.
バッファー	pH: 7.50 Constituents: 0.238% HEPES, 0.87% Sodium chloride, 0.01% BSA
精製度	Immunogen affinity purified
特記事項 (精製)	The antibody was purified by sequential chromatography on phospho- and non-phospho-peptide affinity columns.
ポリ/モノ	ポリクローナル
アイソタイプ	IgG

アプリケーション

The Abpromise guarantee

Abpromise保証は、次のテスト済みアプリケーションにおけるab13879の使用に適用されます

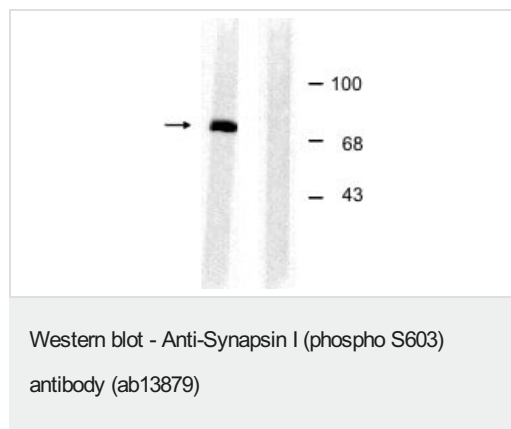
アプリケーションノートには、推奨の開始希釈率がありますが、適切な希釈率につきましてはご確認ください。

アプリケーション	Abreviews	特記事項
WB		1/1000. Predicted molecular weight: 84.6 kDa.

ターゲット情報

機能	Neuronal phosphoprotein that coats synaptic vesicles, binds to the cytoskeleton, and is believed to function in the regulation of neurotransmitter release. The complex formed with NOS1 and CAPON proteins is necessary for specific nitric-oxid functions at a presynaptic level.
関連疾患	Defects in SYN1 are a cause of epilepsy X-linked with variable learning disabilities and behavior disorders [MIM:300491]. XELBD is characterized by variable combinations of epilepsy, learning difficulties, macrocephaly, and aggressive behavior.
配列類似性	Belongs to the synapsin family.
翻訳後修飾	Substrate of at least four different protein kinases. It is probable that phosphorylation plays a role in the regulation of synapsin-1 in the nerve terminal. Phosphorylated upon DNA damage, probably by ATM or ATR.
細胞内局在	Cell junction > synapse. Golgi apparatus.

画像



Right lane-ab13879 at 1/1000 dilution detecting synapsin I by Western blot. Left lane-Peptide block. Right lane-ab13879 at 1/1000 dilution detecting synapsin I by Western blot. Left lane-Peptide block.

Please note: All products are "FOR RESEARCH USE ONLY. NOT FOR USE IN DIAGNOSTIC PROCEDURES"

Our Abpromise to you: Quality guaranteed and expert technical support

- Replacement or refund for products not performing as stated on the datasheet
- Valid for 12 months from date of delivery
- Response to your inquiry within 24 hours
- We provide support in Chinese, English, French, German, Japanese and Spanish
- Extensive multi-media technical resources to help you
- We investigate all quality concerns to ensure our products perform to the highest standards

If the product does not perform as described on this datasheet, we will offer a refund or replacement. For full details of the Abpromise, please visit <https://www.abcam.co.jp/abpromise> or contact our technical team.

Terms and conditions

- Guarantee only valid for products bought direct from Abcam or one of our authorized distributors