

Anti-SYCE1 antibody ab122634

画像数 2

製品の概要

製品名	Anti-SYCE1 antibody
製品の詳細	Rabbit polyclonal to SYCE1
由来種	Rabbit
アプリケーション	適用あり: IHC-P, WB
種交差性	交差種: Human
免疫原	antigen sequence: QQQQKQRQL KEELEKHGMQ VPAQAQSTQE EEAGPGDVAS PKPLKGERPG AAHQAGPDVL IGQEDTLHPD LSPRGFQEIK EL, corresponding to amino acids 269-350 of Human SYCE1. Run BLAST with Expasy Run BLAST with NCBI
ポジティブ・コントロール	Human duodenum tissue; RT 4, U 251 MG, Human liver lysates.
特記事項	<p>The Life Science industry has been in the grips of a reproducibility crisis for a number of years. Abcam is leading the way in addressing this with our range of recombinant monoclonal antibodies and knockout edited cell lines for gold-standard validation. Please check that this product meets your needs before purchasing.</p> <p>If you have any questions, special requirements or concerns, please send us an inquiry and/or contact our Support team ahead of purchase. Recommended alternatives for this product can be found below, along with publications, customer reviews and Q&As</p>

製品の特性

製品の状態	Liquid
保存方法	Shipped at 4°C. Store at -20°C or -80°C. Avoid freeze / thaw cycle. Store undiluted.
バッファー	pH: 7.20 Preservative: 0.02% Sodium azide Constituents: 59% PBS, 40% Glycerol (glycerin, glycerine)
精製度	Immunogen affinity purified
ポリ/モノ	ポリクローナル
アイソタイプ	IgG

アプリケーション

The Abpromise guarantee

Abpromise保証は、次のテスト済みアプリケーションにおけるab122634の使用に適用されます

アプリケーションノートには、推奨の開始希釈率がありますが、適切な希釈率につきましてはご検討ください。

アプリケーション	Abreviews	特記事項
IHC-P		1/200 - 1/500. Perform heat mediated antigen retrieval with citrate buffer pH 6 before commencing with IHC staining protocol.
WB		1/250 - 1/500.

ターゲット情報

機能

Major component of the transverse central element of synaptonemal complexes (SCS), formed between homologous chromosomes during meiotic prophase. Requires SYCP1 in order to be incorporated into the central element. May have a role in the synaptonemal complex assembly, stabilization and recombination.

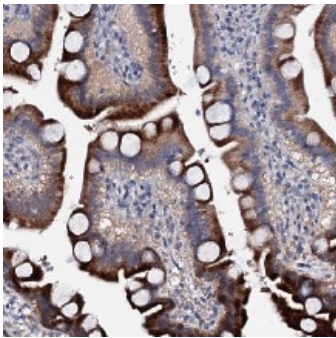
配列類似性

Belongs to the SYCE family.

細胞内局在

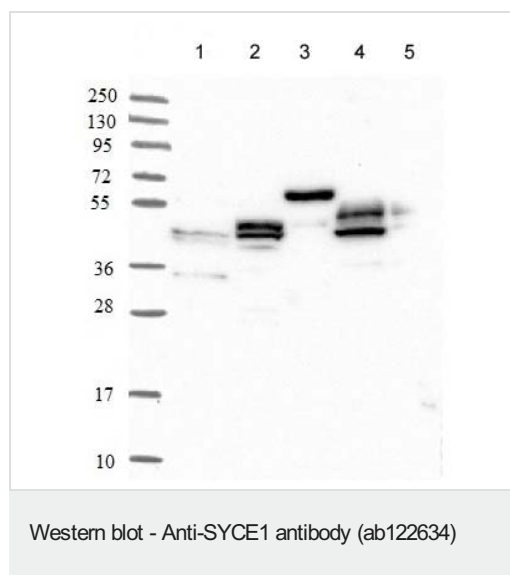
Nucleus. Chromosome. Associates with chromatin. In prophase I stage of meiosis, localizes in the transverse central elements of the central region between lateral elements of the synaptonemal complexes. Found only where the chromosome cores are synapsed. Colocalizes with SYCE2 in the central elements.

画像



ab122634 at 1/200 dilution staining SYCE1 in Paraffin-embedded Human duodenum tissue by Immunohistochemistry.

Immunohistochemistry (Formalin/PFA-fixed paraffin-embedded sections) - Anti-SYCE1 antibody (ab122634)



All lanes : Anti-SYCE1 antibody (ab122634) at 1/250 dilution

Lane 1 : RT 4 lysate

Lane 2 : U 251 MG lysate

Lane 3 : Human plasma lysate

Lane 4 : Human liver lysate

Lane 5 : Human tonsil lysate

Developed using the ECL technique.

Please note: All products are "FOR RESEARCH USE ONLY. NOT FOR USE IN DIAGNOSTIC PROCEDURES"

Our Abpromise to you: Quality guaranteed and expert technical support

- Replacement or refund for products not performing as stated on the datasheet
- Valid for 12 months from date of delivery
- Response to your inquiry within 24 hours
- We provide support in Chinese, English, French, German, Japanese and Spanish
- Extensive multi-media technical resources to help you
- We investigate all quality concerns to ensure our products perform to the highest standards

If the product does not perform as described on this datasheet, we will offer a refund or replacement. For full details of the Abpromise, please visit <https://www.abcam.co.jp/abpromise> or contact our technical team.

Terms and conditions

- Guarantee only valid for products bought direct from Abcam or one of our authorized distributors