

Anti-SVEP1 antibody ab121677

[1 Abreviews](#) [画像数 2](#)

製品の概要

製品名	Anti-SVEP1 antibody
製品の詳細	Rabbit polyclonal to SVEP1
由来種	Rabbit
アプリケーション	適用あり: IHC-P
種交差性	交差種: Human
免疫原	antigen sequence: GDFICTPDNT GVNCTLTCL EGYDFTEGSTD KYCAYEDGV WKPTYTTEWP DCAKKRFANH GFKSFEMFYK AARCDDTDL M KKFSEAFETT LG, corresponding to internal sequence amino acids 736-827 of Human SVEP1. Run BLAST with Expasy Run BLAST with NCBI
ポジティブ・コントロール	IHC-P: Human Fallopian tube and lung tissue
特記事項	<p>The Life Science industry has been in the grips of a reproducibility crisis for a number of years. Abcam is leading the way in addressing this with our range of recombinant monoclonal antibodies and knockout edited cell lines for gold-standard validation. Please check that this product meets your needs before purchasing.</p> <p>If you have any questions, special requirements or concerns, please send us an inquiry and/or contact our Support team ahead of purchase. Recommended alternatives for this product can be found below, along with publications, customer reviews and Q&As</p>

製品の特性

製品の状態	Liquid
保存方法	Shipped at 4°C. Upon delivery aliquot and store at -20°C. Avoid freeze / thaw cycles.
バッファー	pH: 7.20 Preservative: 0.02% Sodium azide Constituents: 59% PBS, 40% Glycerol (glycerin, glycerine)
精製度	Immunogen affinity purified
ポリクローナル	ポリクローナル
アイソタイプ	IgG

アプリケーション

The Abpromise guarantee

Abpromise保証は、次のテスト済みアプリケーションにおけるab121677の使用に適用されます

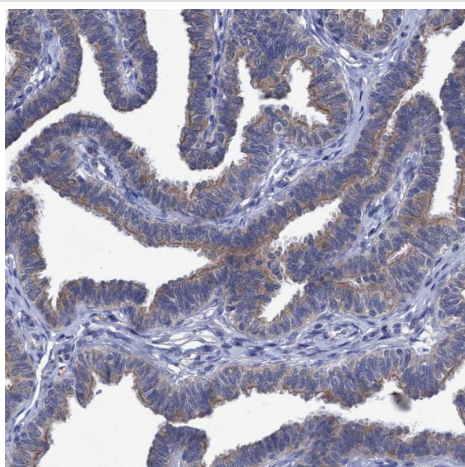
アプリケーションノートには、推奨の開始希釈率がありますが、適切な希釈率につきましてはご検討ください。

アプリケーション	Abreviews	特記事項
IHC-P		1/200 - 1/500. Perform heat mediated antigen retrieval with citrate buffer pH 6 before commencing with IHC staining protocol.

ターゲット情報

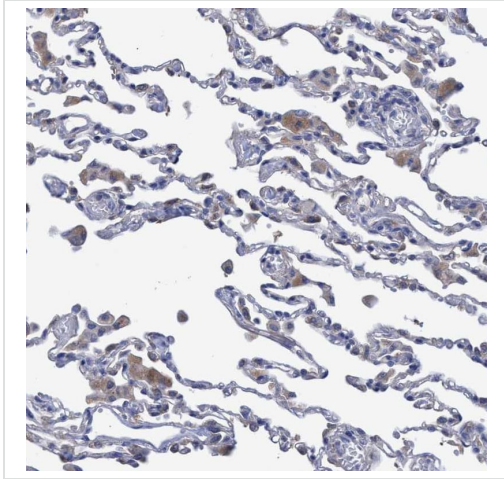
機能	May play a role in the cell attachment process.
組織特異性	Present in mesenchymal primary cultured cell lysates (at protein level). Highly expressed in placenta. Also expressed in marrow stromal cell. Weakly or not expressed in other tissues.
配列類似性	Contains 9 EGF-like domains. Contains 2 HYR domains. Contains 1 pentaxin domain. Contains 34 Sushi (CCP/SCR) domains. Contains 1 VWFA domain.
細胞内局在	Secreted. Cytoplasm. Membrane.

画像



Immunohistochemical analysis of human Fallopian tube labeling SVEP1 with ab121677 at 1/200 dilution. Antigen retrieval was heat mediated with citrate buffer pH 6 before commencing with IHC staining protocol.

Immunohistochemistry (Formalin/PFA-fixed paraffin-embedded sections) - Anti-SVEP1 antibody (ab121677)



Immunohistochemical analysis of human lung labeling SVEP1 with ab121677 at 1/200 dilution. Antigen retrieval was heat mediated with citrate buffer pH 6 before commencing with IHC staining protocol.

Immunohistochemistry (Formalin/PFA-fixed paraffin-embedded sections) - Anti-SVEP1 antibody (ab121677)

Please note: All products are "FOR RESEARCH USE ONLY. NOT FOR USE IN DIAGNOSTIC PROCEDURES"

Our Abpromise to you: Quality guaranteed and expert technical support

- Replacement or refund for products not performing as stated on the datasheet
- Valid for 12 months from date of delivery
- Response to your inquiry within 24 hours
- We provide support in Chinese, English, French, German, Japanese and Spanish
- Extensive multi-media technical resources to help you
- We investigate all quality concerns to ensure our products perform to the highest standards

If the product does not perform as described on this datasheet, we will offer a refund or replacement. For full details of the Abpromise, please visit <https://www.abcam.co.jp/abpromise> or contact our technical team.

Terms and conditions

- Guarantee only valid for products bought direct from Abcam or one of our authorized distributors