


Anti-SV2C antibody ab33892

★★★★★ **1 Abreviews** **3 References** 画像数 **3**

製品の概要

製品名	Anti-SV2C antibody
製品の詳細	Rabbit polyclonal to SV2C
由来種	Rabbit
アプリケーション	適用あり: ICC/IF, WB, IHC-FoFr
種交差性	交差種: Mouse, Rat 交差が予測される動物種: Human 
免疫原	Synthetic peptide corresponding to Rat SV2C aa 1-100 conjugated to keyhole limpet haemocyanin. (Peptide available as ab33891)
特記事項	<p>The Life Science industry has been in the grips of a reproducibility crisis for a number of years. Abcam is leading the way in addressing this with our range of recombinant monoclonal antibodies and knockout edited cell lines for gold-standard validation. Please check that this product meets your needs before purchasing.</p> <p>If you have any questions, special requirements or concerns, please send us an inquiry and/or contact our Support team ahead of purchase. Recommended alternatives for this product can be found below, along with publications, customer reviews and Q&As</p>

製品の特性

製品の状態	Liquid
保存方法	Shipped at 4°C. Store at +4°C short term (1-2 weeks). Upon delivery aliquot. Store at -20°C or -80°C. Avoid freeze / thaw cycle.
バッファー	pH: 7.40 Preservative: 0.02% Sodium azide Constituents: PBS, 1% BSA Batches of this product that have a concentration < 1mg/ml may have BSA added as a stabilising agent. If you would like information about the formulation of a specific lot, please contact our scientific support team who will be happy to help.
精製度	Immunogen affinity purified
ポリ/モノ	ポリクローナル

アプリケーション

The Abpromise guarantee

Abpromise保証は、次のテスト済みアプリケーションにおけるab33892の使用に適用されます

アプリケーションノートには、推奨の開始希釈率がありますが、適切な希釈率につきましてはご検討ください。

アプリケーション	Abreviews	特記事項
ICC/IF		
WB		
IHC-FoFr	★★★★★ (1)	

追加情報

ICC/IF: Use at a concentration of 1 µg/ml.

WB: Use at a concentration of 1 µg/ml. Detects a band of approximately 82 kDa (predicted molecular weight: 82 kDa).

Not yet tested in other applications.

Optimal dilutions/concentrations should be determined by the end user.

ターゲット情報

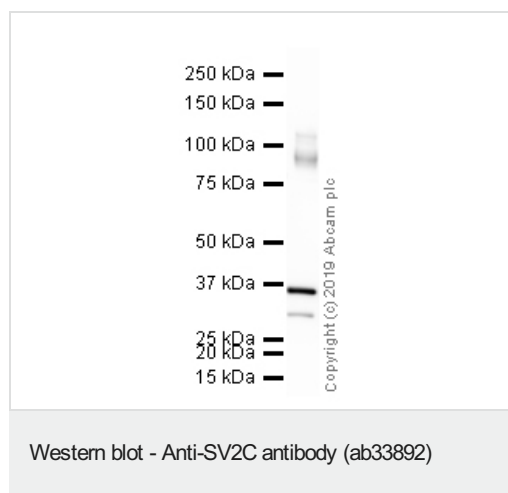
関連性

SV2s (Synaptic Vesicle protein 2) are integral membrane glycoproteins present in all synaptic vesicles. They have 12 transmembrane domains predicted by sequence analysis. There are three characterized isoforms, SV2A, SV2B and SV2C. SV2A is expressed ubiquitously throughout the brain. SV2B has a more restricted distribution with varying degrees of coexpression with SV2A. SV2C is more closely related to SV2A but shows a very restricted expression pattern; the highest expression levels being observed in phylogenetically old brain areas like pallidum, the midbrain and the olfactory bulb.

細胞内局在

Integral Membrane Protein

画像



Anti-SV2C antibody (ab33892) at 1 µg/ml + Olfactory Bulb (Rat)

Tissue Lysate at 20 µg

Secondary

Goat Anti-Rabbit IgG H&L (HRP) at 1/50000 dilution

Developed using the ECL technique.

Performed under reducing conditions.

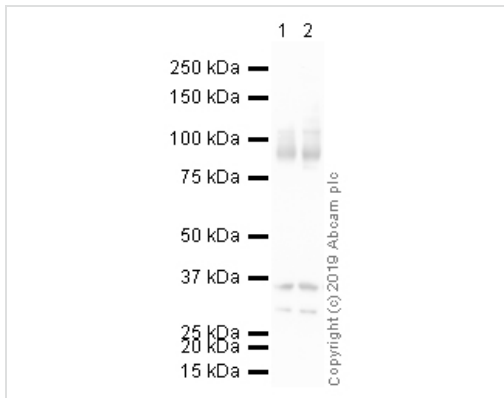
Predicted band size: 82 kDa

Observed band size: 82 kDa

Additional bands at: 30 kDa (possible non-specific binding), 36 kDa (possible non-specific binding)

Exposure time: 4 minutes

This blot was produced using a 4-12% Bis-tris gel under the MOPS buffer system. The gel was run at 200V for 50 minutes before being transferred onto a Nitrocellulose membrane at 30V for 70 minutes. The membrane was then blocked for an hour using 2% Bovine Serum Albumin before being incubated with ab33892 overnight at 4°C. Antibody binding was detected using an **anti-rabbit HRP** secondary antibody, and visualised using ECL development solution **ab133406**.



Western blot - Anti-SV2C antibody (ab33892)

All lanes : Anti-SV2C antibody (ab33892) at 1 µg/ml

Lane 1 : Substantia Nigra (Mouse) Tissue Lysate

Lane 2 : Olfactory Bulb (Mouse) Tissue Lysate

Lysates/proteins at 20 µg per lane.

Secondary

All lanes : Goat Anti-Rabbit IgG H&L (HRP) at 1/50000 dilution

Developed using the ECL technique.

Performed under reducing conditions.

Predicted band size: 82 kDa

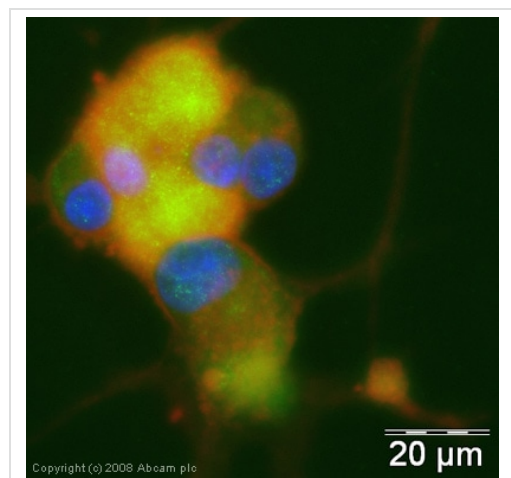
Observed band size: 82 kDa

Additional bands at: 30 kDa (possible non-specific binding), 36 kDa (possible non-specific binding)

Exposure time: 1 minute

This blot was produced using a 4-12% Bis-tris gel under the MOPS buffer system. The gel was run at 200V for 50 minutes before being transferred onto a Nitrocellulose membrane at 30V for 70 minutes. The membrane was then blocked for an hour using 2% Bovine

Serum Albumin before being incubated with ab33892 overnight at 4°C. Antibody binding was detected using an **anti-rabbit HRP** secondary antibody, and visualised using ECL development solution **ab133406**.



Immunocytochemistry/ Immunofluorescence - Anti-SV2C antibody (ab33892)

ICC/IF image of ab33892 stained PC12 cells. The cells were 4% PFA fixed (10 min) and then incubated in 1%BSA / 10% normal goat serum / 0.3M glycine in 0.1% PBS-Tween for 1h to permeabilise the cells and block non-specific protein-protein interactions. The cells were then incubated with the antibody (ab33892, 1μg/ml) overnight at +4°C. The secondary antibody (green) was Alexa Fluor® 488 goat anti-rabbit IgG (H+L) used at a 1/1000 dilution for 1h. Alexa Fluor® 594 WGA was used to label plasma membranes (red) at a 1/200 dilution for 1h. DAPI was used to stain the cell nuclei (blue).

Please note: All products are "FOR RESEARCH USE ONLY. NOT FOR USE IN DIAGNOSTIC PROCEDURES"

Our Abpromise to you: Quality guaranteed and expert technical support

- Replacement or refund for products not performing as stated on the datasheet
- Valid for 12 months from date of delivery
- Response to your inquiry within 24 hours
- We provide support in Chinese, English, French, German, Japanese and Spanish
- Extensive multi-media technical resources to help you
- We investigate all quality concerns to ensure our products perform to the highest standards

If the product does not perform as described on this datasheet, we will offer a refund or replacement. For full details of the Abpromise, please visit <https://www.abcam.co.jp/abpromise> or contact our technical team.

Terms and conditions

- Guarantee only valid for products bought direct from Abcam or one of our authorized distributors