


# SureLight® APC Anti-PGE2 receptor EP4 subtype antibody ab92763

**3 References** [画像数 1](#)

### 製品の概要

製品名	SureLight® APC Anti-PGE2 receptor EP4 subtype antibody
製品の詳細	SureLight® APC Rabbit polyclonal to PGE2 receptor EP4 subtype
由来種	Rabbit
標識	SureLight® APC. Ex: 652nm, Em: 657nm
特異性	ab92763 is reactive with EP4 receptor and non-reactive with EP1, EP2, and EP3 receptors.
アプリケーション	<b>適用あり:</b> ICC/IF
種交差性	<b>交差種:</b> Human <b>交差が予測される動物種:</b> Rabbit, Cow, Chimpanzee, Cynomolgus monkey 
免疫原	Synthetic peptide corresponding to Human PGE2 receptor EP4 subtype aa 459-488 (C terminal). Sequence: GSGRAGPAPKGSSLQVTFPSETLNLSEKCI

 [Run BLAST with](#)

 [Run BLAST with](#)

### 特記事項

The Life Science industry has been in the grips of a reproducibility crisis for a number of years. Abcam is leading the way in addressing this with our range of recombinant monoclonal antibodies and knockout edited cell lines for gold-standard validation. Please check that this product meets your needs before purchasing.

If you have any questions, special requirements or concerns, please send us an inquiry and/or contact our Support team ahead of purchase. Recommended alternatives for this product can be found below, along with publications, customer reviews and Q&As

### 製品の特性

製品の状態	Liquid
保存方法	Shipped at 4°C. Store at +4°C. Store In the Dark.
バッファー	pH: 7.20 Preservative: 0.013% Sodium azide Constituents: 1.64% Sodium phosphate, 0.58% Sodium chloride
精製度	Immunogen affinity purified
ポリ/モノ	ポリクローナル

## アプリケーション

## The Abpromise guarantee

**Abpromise保証は、次のテスト済みアプリケーションにおけるab92763の使用に適用されます**

アプリケーションノートには、推奨の開始希釈率がありますが、適切な希釈率につきましてはご検討ください。

アプリケーション	Abreviews	特記事項
ICC/IF		Use a concentration of 5 µg/ml.

## ターゲット情報

## 機能

Receptor for prostaglandin E2 (PGE2). The activity of this receptor is mediated by G(s) proteins that stimulate adenylate cyclase. Has a relaxing effect on smooth muscle. May play an important role in regulating renal hemodynamics, intestinal epithelial transport, adrenal aldosterone secretion, and uterine function.

## 組織特異性

High in intestine and in peripheral blood mononuclear cells; low in lung, kidney, thymus, uterus, vasculature and brain. Not found in liver, heart, retina or skeletal muscle.

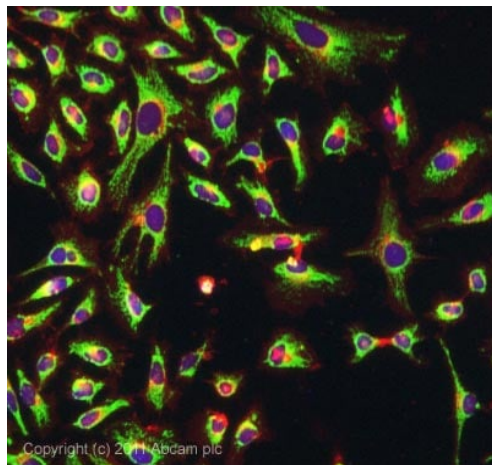
## 配列類似性

Belongs to the G-protein coupled receptor 1 family.

## 細胞内局在

Cell membrane.

## 画像



ICC/IF image of ab92763 stained HeLa cells. The cells were 4% formaldehyde fixed (10 min) and then incubated in 1% BSA / 10% normal goat serum / 0.3M glycine in 0.1% PBS-Tween for 1h to permeabilise the cells and block non-specific protein-protein interactions. The cells were then incubated with the antibody (ab92763, 5µg/ml) overnight at +4°C. The secondary antibody (green) was **ab96899**, DyLight® 488 goat anti-rabbit IgG (H+L) used at a 1/250 dilution for 1h. Alexa Fluor® 594 WGA was used to label plasma membranes (red) at a 1/200 dilution for 1h. DAPI was used to stain the cell nuclei (blue) at a concentration of 1.43µM.

Immunocytochemistry/ Immunofluorescence -  
SureLight® APC Anti-PGE2 receptor EP4 subtype  
antibody (ab92763)

**Please note:** All products are "FOR RESEARCH USE ONLY. NOT FOR USE IN DIAGNOSTIC PROCEDURES"

### **Our Abpromise to you: Quality guaranteed and expert technical support**

---

- Replacement or refund for products not performing as stated on the datasheet
- Valid for 12 months from date of delivery
- Response to your inquiry within 24 hours
  
- We provide support in Chinese, English, French, German, Japanese and Spanish
- Extensive multi-media technical resources to help you
- We investigate all quality concerns to ensure our products perform to the highest standards

If the product does not perform as described on this datasheet, we will offer a refund or replacement. For full details of the Abpromise, please visit <https://www.abcam.co.jp/abpromise> or contact our technical team.

### **Terms and conditions**

---

- Guarantee only valid for products bought direct from Abcam or one of our authorized distributors