


Anti-Superoxide Dismutase 3/EC-SOD antibody ab83108

10 References **画像数 1**

製品の概要

製品名	Anti-Superoxide Dismutase 3/EC-SOD antibody
製品の詳細	Rabbit polyclonal to Superoxide Dismutase 3/EC-SOD
由来種	Rabbit
アプリケーション	適用あり: WB
種交差性	交差種: Mouse, Rat, Human 交差が予測される動物種: Rabbit 
免疫原	Synthetic peptide corresponding to Superoxide Dismutase 3/EC-SOD. Database link: <u>P08294</u>
ポジティブ・コントロール	Rat and mouse Lung Tissue Extract; Human Superoxide Dismutase 3/EC-SOD Protein.
特記事項	<p>The Life Science industry has been in the grips of a reproducibility crisis for a number of years. Abcam is leading the way in addressing this with our range of recombinant monoclonal antibodies and knockout edited cell lines for gold-standard validation. Please check that this product meets your needs before purchasing.</p> <p>If you have any questions, special requirements or concerns, please send us an inquiry and/or contact our Support team ahead of purchase. Recommended alternatives for this product can be found below, along with publications, customer reviews and Q&As</p>

製品の特性

製品の状態	Liquid
保存方法	Shipped at 4°C. Upon delivery aliquot and store at -20°C. Avoid repeated freeze / thaw cycles.
バッファー	Preservative: 0.09% Sodium azide Constituents: 50% Glycerol (glycerin, glycerine), PBS
精製度	Protein A purified
ポリ/モノ	ポリクローナル
アイソタイプ	IgG

アプリケーション

The Abpromise guarantee

Abpromise保証は、次のテスト済みアプリケーションにおけるab83108の使用に適用されます

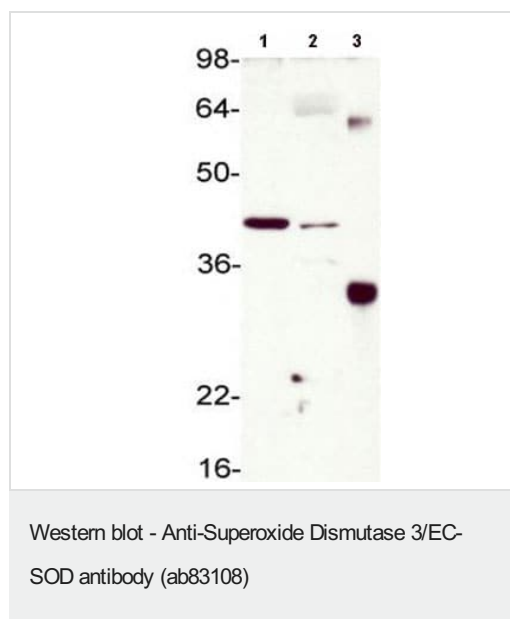
アプリケーションノートには、推奨の開始希釈率がありますが、適切な希釈率につきましてはご確認ください。

アプリケーション	Abreviews	特記事項
WB		1/1000. Detects a band of approximately 35 kDa (predicted molecular weight: 26 kDa).

ターゲット情報

機能	Protect the extracellular space from toxic effect of reactive oxygen intermediates by converting superoxide radicals into hydrogen peroxide and oxygen.
組織特異性	Expressed in blood vessels, heart, lung, kidney and placenta. Major SOD isoenzyme in extracellular fluids such as plasma, lymph and synovial fluid.
配列類似性	Belongs to the Cu-Zn superoxide dismutase family.
細胞内局在	Secreted > extracellular space. 99% of EC-SOD is anchored to heparan sulfate proteoglycans in the tissue interstitium, and 1% is located in the vasculature in equilibrium between the plasma and the endothelium.

画像



All lanes : Anti-Superoxide Dismutase 3/EC-SOD antibody (ab83108) at 1/1000 dilution

Lane 1 : Rat lung tissue extract

Lane 2 : Mouse lung tissue extract

Lane 3 : Human Superoxide Dismutase 3/EC-SOD protein

Developed using the ECL technique.

Predicted band size: 26 kDa

Observed band size: 35 kDa

Additional bands at: 40 kDa (possible glycosylated form), 60 kDa (possible dimer)

Please note: All products are "FOR RESEARCH USE ONLY. NOT FOR USE IN DIAGNOSTIC PROCEDURES"

Our Abpromise to you: Quality guaranteed and expert technical support

- Replacement or refund for products not performing as stated on the datasheet
- Valid for 12 months from date of delivery
- Response to your inquiry within 24 hours
- We provide support in Chinese, English, French, German, Japanese and Spanish

- Extensive multi-media technical resources to help you
- We investigate all quality concerns to ensure our products perform to the highest standards

If the product does not perform as described on this datasheet, we will offer a refund or replacement. For full details of the Abpromise, please visit <https://www.abcam.co.jp/abpromise> or contact our technical team.

Terms and conditions

- Guarantee only valid for products bought direct from Abcam or one of our authorized distributors