

Anti-Superoxide Dismutase 3/EC-SOD antibody [4G11G6] ab80946

★★★★★ **1 Abreviews** **13 References** 画像数 **3**

製品の概要

製品名	Anti-Superoxide Dismutase 3/EC-SOD antibody [4G11G6]
製品の詳細	Mouse monoclonal [4G11G6] to Superoxide Dismutase 3/EC-SOD
由来種	Mouse
特異性	Detects extracellular Superoxide Dismutase 3/EC-SOD.
アプリケーション	適用あり: Flow Cyt, ELISA, ICC/IF, IHC-Fr, WB, IHC-P
種交差性	交差種: Mouse, Rat, Human
免疫原	Full length native protein (purified) corresponding to Human Superoxide Dismutase 3/EC-SOD. Database link: P08294
ポジティブ・コントロール	Human cartilage lysate
特記事項	<p>The Life Science industry has been in the grips of a reproducibility crisis for a number of years. Abcam is leading the way in addressing this with our range of recombinant monoclonal antibodies and knockout edited cell lines for gold-standard validation. Please check that this product meets your needs before purchasing.</p> <p>If you have any questions, special requirements or concerns, please send us an inquiry and/or contact our Support team ahead of purchase. Recommended alternatives for this product can be found below, along with publications, customer reviews and Q&As</p>

製品の特性

製品の状態	Liquid
保存方法	Shipped at 4°C. Upon delivery aliquot and store at -20°C. Avoid repeated freeze / thaw cycles.
バッファー	Preservative: 0.09% Sodium azide Constituents: 50% Glycerol (glycerin, glycerine), PBS
精製度	Protein G purified
ポリ/モノ	モノクローナル
クローン名	4G11G6
アイソタイプ	IgG1
軽鎖の種類	kappa

アプリケーション

The Abpromise guarantee Abpromise保証は、 次のテスト済みアプリケーションにおけるab80946の使用に適用されます
アプリケーションノートには、推奨の開始希釈率がありますが、適切な希釈率につきましてはご検討ください。

アプリケーション	Abreviews	特記事項
Flow Cyt		Use 2µg for 10 ⁶ cells. ab170190 - Mouse monoclonal IgG1, is suitable for use as an isotype control with this antibody.
ELISA		Use at an assay dependent concentration.
ICC/IF		Use at an assay dependent concentration.
IHC-Fr		Use at an assay dependent concentration.
WB	★★★★★ (1)	1/1000. Detects a band of approximately 35 kDa (predicted molecular weight: 26 kDa).
IHC-P		1/100.

ターゲット情報

機能	Protect the extracellular space from toxic effect of reactive oxygen intermediates by converting superoxide radicals into hydrogen peroxide and oxygen.
組織特異性	Expressed in blood vessels, heart, lung, kidney and placenta. Major SOD isoenzyme in extracellular fluids such as plasma, lymph and synovial fluid.
配列類似性	Belongs to the Cu-Zn superoxide dismutase family.
細胞内局在	Secreted > extracellular space. 99% of EC-SOD is anchored to heparan sulfate proteoglycans in the tissue interstitium, and 1% is located in the vasculature in equilibrium between the plasma and the endothelium.

画像



Western blot - Anti-Superoxide Dismutase 3/EC-SOD antibody [4G11G6] (ab80946)

Anti-Superoxide Dismutase 3/EC-SOD antibody [4G11G6] (ab80946) at 1 µg/ml + Lung (Mouse) Tissue Lysate at 10 µg

Secondary

Goat Anti-Mouse IgG H&L (HRP) preadsorbed (**ab97040**) at 1/5000 dilution

Developed using the ECL technique.

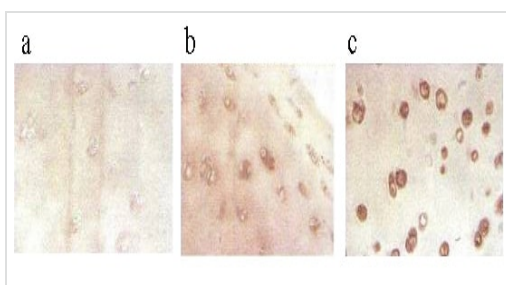
Performed under reducing conditions.

Predicted band size: 26 kDa

Observed band size: 25 kDa

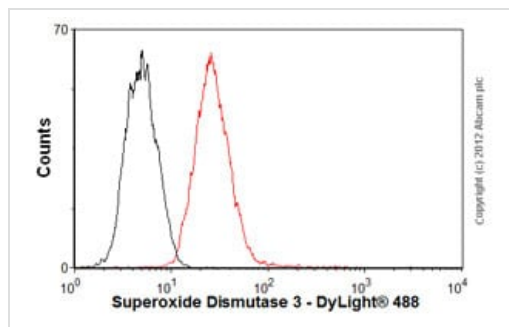
Additional bands at: 54 kDa. We are unsure as to the identity of these extra bands.

Exposure time: 1 minute



Immunohistochemistry (Formalin/PFA-fixed paraffin-embedded sections) - Anti-Superoxide Dismutase 3/EC-SOD antibody [4G11G6] (ab80946)

ab80946 at 1/100 dilution staining Superoxide Dismutase 3/EC-SOD in human cartilage by Immunohistochemistry (Bouin's fixative fixed paraffin-embedded tissue section). Antigen retrieval was done by microwave in citrate buffer. A HRP-conjugated anti mouse secondary was used at 1/10 dilution. Image 'a' represents control, 'b' staining of tissue from young human cartilage and 'c' show staining cartilage of a person suffered from osteoarthritis.



Flow Cytometry - Anti-Superoxide Dismutase 3/EC-SOD antibody [4G11G6] (ab80946)

Overlay histogram showing HEK293 cells stained with ab80946 (red line). The cells were fixed with 80% methanol (5 min) and incubated in 1x PBS / 10% normal goat serum / 0.3M glycine to block non-specific protein-protein interactions. The cells were then incubated with the antibody (ab80946, 2µg/1x10⁶ cells) for 30 min at 22°C. The secondary antibody used was DyLight® 488 goat anti-mouse IgG (H+L) (**ab96879**) at 1/500 dilution for 30 min at 22°C. Isotype control antibody (black line) was mouse IgG1 [ICIGG1] (**ab91353**, 2µg/1x10⁶ cells) used under the same conditions. Acquisition of >5,000 events was performed.

Please note that Abcam do not have any data for use of this antibody on non-fixed cells. We welcome any customer feedback.

Please note: All products are "FOR RESEARCH USE ONLY. NOT FOR USE IN DIAGNOSTIC PROCEDURES"

Our Abpromise to you: Quality guaranteed and expert technical support

- Replacement or refund for products not performing as stated on the datasheet
- Valid for 12 months from date of delivery
- Response to your inquiry within 24 hours
- We provide support in Chinese, English, French, German, Japanese and Spanish
- Extensive multi-media technical resources to help you
- We investigate all quality concerns to ensure our products perform to the highest standards

If the product does not perform as described on this datasheet, we will offer a refund or replacement. For full details of the Abpromise, please visit <https://www.abcam.co.jp/abpromise> or contact our technical team.

Terms and conditions

- Guarantee only valid for products bought direct from Abcam or one of our authorized distributors