

Anti-Superoxide Dismutase 1 antibody [EP1727Y] ab51254

KO 評価済 リコンビナント RabMAb

★★★★★ 4 Abreviews 31 References 画像数 11

製品の概要

製品名	Anti-Superoxide Dismutase 1 antibody [EP1727Y]
製品の詳細	Rabbit monoclonal [EP1727Y] to Superoxide Dismutase 1
由来種	Rabbit
アプリケーション	適用あり: Flow Cyt (Intra), WB, IHC-P, ICC/IF 適用なし: IP
種交差性	交差種: Mouse, Rat, Human
免疫原	Synthetic peptide. This information is proprietary to Abcam and/or its suppliers.
ポジティブ・コントロール	IHC-P: Mouse cerebrum, rat liver and human breast carcinoma tissue WB: Jurkat cell lysate; Mouse and rat brain tissue lysates. ICC/IF: HeLa, PC-12 and NIH/3T3 cells. Flow Cyt (intra): HeLa cells.
特記事項	This product is a recombinant monoclonal antibody, which offers several advantages including: <ul style="list-style-type: none"> - High batch-to-batch consistency and reproducibility - Improved sensitivity and specificity - Long-term security of supply - Animal-free production For more information see here . Our RabMAb [®] technology is a patented hybridoma-based technology for making rabbit monoclonal antibodies. For details on our patents, please refer to RabMAb[®] patents .

製品の特性

製品の状態	Liquid
保存方法	Shipped at 4°C. Upon delivery aliquot and store at -20°C. Avoid freeze / thaw cycles.
バッファー	pH: 7.20 Preservative: 0.05% Sodium azide Constituents: 0.1% BSA, 40% Glycerol (glycerin, glycerine), 9.85% Tris glycine, 50% Tissue culture supernatant
精製度	Protein A purified
ポリ/モノ	モノクローナル
クローン名	EP1727Y

アイソタイプ

IgG

アプリケーション

The Abpromise guarantee **Abpromise保証は、次のテスト済みアプリケーションにおけるab51254の使用に適用されます**

アプリケーションノートには、推奨の開始希釈率がありますが、適切な希釈率につきましてはご検討ください。

アプリケーション	Abreviews	特記事項
Flow Cyt (Intra)		1/100. ab172730 - Rabbit monoclonal IgG, is suitable for use as an isotype control with this antibody.
WB	★★★★★ (3)	1/50000. Detects a band of approximately 18 kDa (predicted molecular weight: 16 kDa).
IHC-P		1/1000. Perform heat mediated antigen retrieval with Tris/EDTA buffer pH 9.0 before commencing with IHC staining protocol.
ICC/IF		1/100 - 1/250.

追加情報

Is unsuitable for IP.

ターゲット情報

機能

Destroys radicals which are normally produced within the cells and which are toxic to biological systems.

関連疾患

Defects in SOD1 are the cause of amyotrophic lateral sclerosis type 1 (ALS1) [MIM:105400]. ALS1 is a familial form of amyotrophic lateral sclerosis, a neurodegenerative disorder affecting upper and lower motor neurons and resulting in fatal paralysis. Sensory abnormalities are absent. Death usually occurs within 2 to 5 years. The etiology of amyotrophic lateral sclerosis is likely to be multifactorial, involving both genetic and environmental factors. The disease is inherited in 5-10% of cases leading to familial forms.

配列類似性

Belongs to the Cu-Zn superoxide dismutase family.

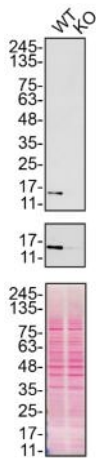
翻訳後修飾

Unlike wild-type protein, the pathogenic variants ALS1 Arg-38, Arg-47, Arg-86 and Ala-94 are polyubiquitinated by RNF19A leading to their proteasomal degradation. The pathogenic variants ALS1 Arg-86 and Ala-94 are ubiquitinated by MARCH5 leading to their proteasomal degradation.
The ditryptophan cross-link at Trp-33 is responsible for the non-disulfide-linked homodimerization. Such modification might only occur in extreme conditions and additional experimental evidence is required.

細胞内局在

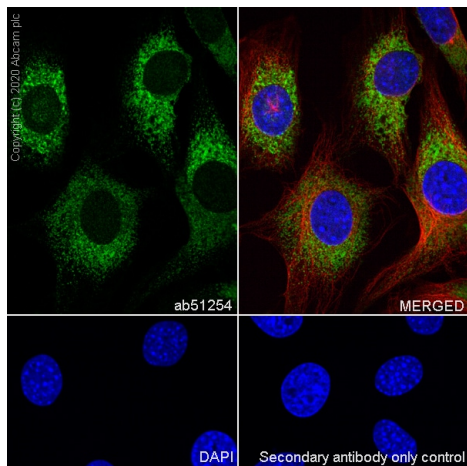
Cytoplasm. The pathogenic variants ALS1 Arg-86 and Ala-94 gradually aggregates and accumulates in mitochondria.

画像



Western blot - Anti-Superoxide Dismutase 1 antibody [EP1727Y] (ab51254)

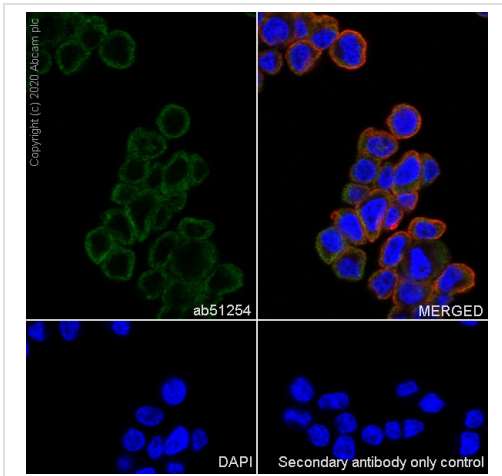
ab51254 was shown to react with SOD1 in wild-type HeLa cells in Western blot with loss of signal observed in a SOD1 knockout cell line. Wild-type HeLa and SOD1 knockout cell lysates were subjected to SDS-PAGE. Membranes were blocked in 5% milk in TBST for 1 hr before incubation with ab51254 overnight at 4 °C at a 1/15000 dilution. Blots were incubated with goat anti-rabbit HRP secondary antibodies at 0.2 µg/ml before imaging. These data were provided by YCharOS Inc., an open science company with the mission of characterizing commercially available antibody reagents for all human proteins. Abcam and YCharOS are working together to help address the reproducibility crisis by enabling the life science community to better evaluate commercially available antibodies.



Immunocytochemistry/ Immunofluorescence - Anti-Superoxide Dismutase 1 antibody [EP1727Y] (ab51254)

Immunofluorescent analysis of 4% Paraformaldehyde-fixed, 0.1% TritonX-100 permeabilized NIH/3T3 cells labelling Superoxide Dismutase 1 with ab51254 at 1/100 dilution, followed by **ab150077** Goat Anti-Rabbit IgG H&L (Alexa Fluor® 488) antibody at 1/1000 2 µg/ml dilution (Green). Confocal image showing cytoplasmic and weak nuclear staining in NIH/3T3 cell line **ab195889** Anti-alpha Tubulin mouse monoclonal antibody - Microtubule Marker (Alexa Fluor® 594) was used to counterstain tubulin at 1/200 2.5 dilution (Red). The Nuclear counterstain was DAPI (Blue).

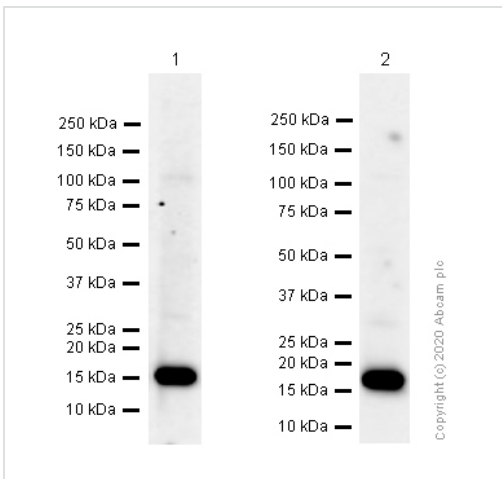
Secondary antibody only control: Secondary antibody is **ab150077** Goat Anti-Rabbit IgG H&L (Alexa Fluor® 488) at 1000 2 µg/ml dilution.



Immunocytochemistry/ Immunofluorescence - Anti-Superoxide Dismutase 1 antibody [EP1727Y] (ab51254)

Immunofluorescent analysis of 4% Paraformaldehyde-fixed, 0.1% TritonX-100 permeabilized PC-12 cells labelling Superoxide Dismutase 1 with ab51254 at 1/100 dilution, followed by **ab150077** Goat Anti-Rabbit IgG H&L (Alexa Fluor[®] 488) antibody at 1/1000 2 ug/ml dilution (Green). Confocal image showing cytoplasmic staining in PC-12 cell line **ab195889** Anti-alpha Tubulin mouse monoclonal antibody - Microtubule Marker (Alexa Fluor[®] 594) was used to counterstain tubulin at 1/200 2.5 dilution (Red). The Nuclear counterstain was DAPI (Blue).

Secondary antibody only control: Secondary antibody is **ab150077** Goat Anti-Rabbit IgG H&L (Alexa Fluor[®] 488) at 1000 2 ug/ml dilution.



Western blot - Anti-Superoxide Dismutase 1 antibody [EP1727Y] (ab51254)

All lanes : Anti-Superoxide Dismutase 1 antibody [EP1727Y] (ab51254) at 0.015 µg/ml

Lane 1 : Mouse brain tissue lysate

Lane 2 : Rat brain tissue lysate

Lysates/proteins at 20 µg per lane.

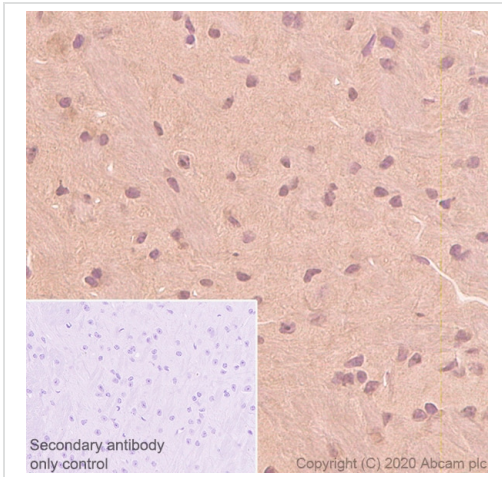
Secondary

All lanes : Goat Anti-Rabbit IgG H&L (HRP) (**ab97051**) at 0.05 µg/ml

Predicted band size: 16 kDa

Observed band size: 18 kDa

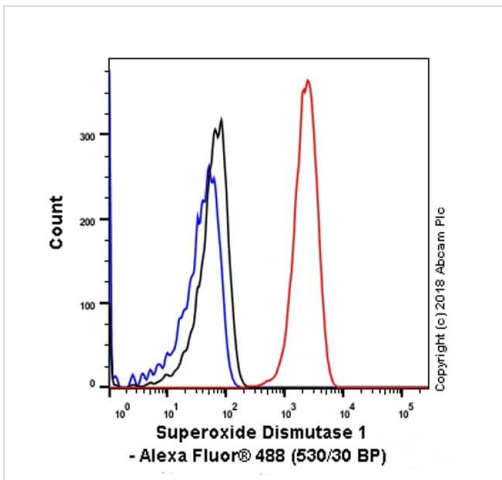
Blocking/diluting Buffer and concentration: 5% NFDM /TBST



Immunohistochemistry (Formalin/PFA-fixed paraffin-embedded sections) - Anti-Superoxide Dismutase 1 antibody [EP1727Y] (ab51254)

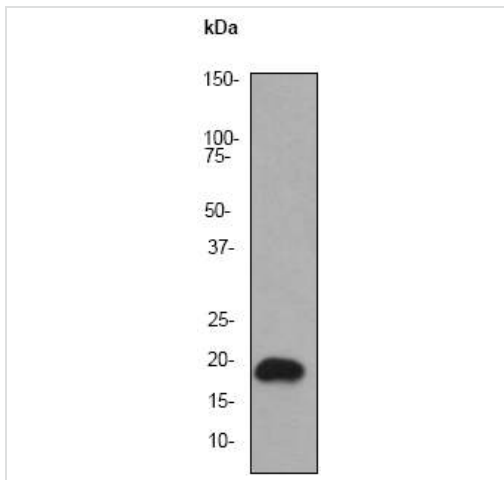
Immunohistochemistry (Formalin/PFA-fixed paraffin-embedded sections) analysis of mouse cerebrum tissue sections labeling Superoxide Dismutase 1 with purified ab51254 at 1/1000 dilution (0.15 µg/ml).

Heat mediated antigen retrieval was performed with Tris-EDTA buffer (pH 9.0, epitope retrieval solution2) for 20 mins. Rabbit specific IHC polymer detection kit HRP/DAB ([ab209101](#)) was used as the secondary antibody. Negative control: secondary antibody only control. Hematoxylin was used as a counterstain.



Flow Cytometry (Intracellular) - Anti-Superoxide Dismutase 1 antibody [EP1727Y] (ab51254)

Intracellular Flow Cytometry analysis of HeLa (Human cervix adenocarcinoma epithelial cell) cells labeling Superoxide Dismutase 1 with ab51254 at 1/20 dilution (1µg) (Red). Goat anti rabbit IgG (Alexa Fluor® 488, [ab150077](#)) at 1/2000 dilution was used as the secondary antibody. Cells were fixed with 4% paraformaldehyde. Rabbit monoclonal IgG ([ab172730](#)) was used as isotype control (Black). Unlabelled control: Cells without incubation with primary antibody and secondary antibody (Blue).



Western blot - Anti-Superoxide Dismutase 1 antibody [EP1727Y] (ab51254)

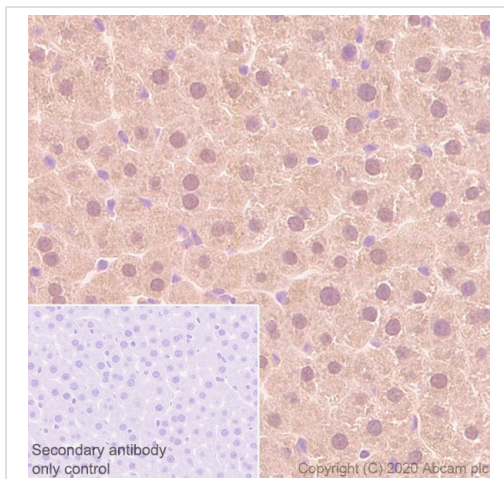
Anti-Superoxide Dismutase 1 antibody [EP1727Y] (ab51254) at 1/50000 dilution + Jurkat cell lysate at 10 µg

Secondary

Goat anti-rabbit HRP labeled at 1/2000 dilution

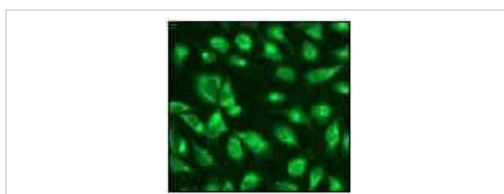
Predicted band size: 16 kDa

Observed band size: 18 kDa



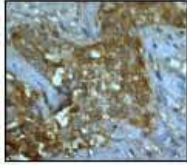
Immunohistochemistry (Formalin/PFA-fixed paraffin-embedded sections) - Anti-Superoxide Dismutase 1 antibody [EP1727Y] (ab51254)

Immunohistochemistry (Formalin/PFA-fixed paraffin-embedded sections) analysis of rat liver tissue sections labeling Superoxide Dismutase 1 with purified ab51254 at 1/1000 dilution (0.15 µg/ml). Heat mediated antigen retrieval was performed with Tris-EDTA buffer (pH 9.0, epitope retrieval solution2) for 20 mins. Rabbit specific IHC polymer detection kit HRP/DAB (**ab209101**) was used as the secondary antibody. Negative control: secondary antibody only control. Hematoxylin was used as a counterstain.



Immunocytochemistry/ Immunofluorescence - Anti-Superoxide Dismutase 1 antibody [EP1727Y] (ab51254)

Immunofluorescent staining of HeLa cells using ab51254 (1:100).



Immunohistochemistry (Formalin/PFA-fixed paraffin-embedded sections) - Anti-Superoxide Dismutase 1 antibody [EP1727Y] (ab51254)

Ab51254 (1:100) staining human Superoxide Dismutase 1 in human breast carcinoma tissue by immunohistochemistry using paraffin embedded tissue.

Perform heat mediated antigen retrieval with citrate buffer pH 6 before commencing with IHC staining protocol.

Why choose a recombinant antibody?



Anti-Superoxide Dismutase 1 antibody [EP1727Y] (ab51254)

Please note: All products are "FOR RESEARCH USE ONLY. NOT FOR USE IN DIAGNOSTIC PROCEDURES"

Our Abpromise to you: Quality guaranteed and expert technical support

- Replacement or refund for products not performing as stated on the datasheet
- Valid for 12 months from date of delivery
- Response to your inquiry within 24 hours
- We provide support in Chinese, English, French, German, Japanese and Spanish
- Extensive multi-media technical resources to help you
- We investigate all quality concerns to ensure our products perform to the highest standards

If the product does not perform as described on this datasheet, we will offer a refund or replacement. For full details of the Abpromise, please visit <https://www.abcam.co.jp/abpromise> or contact our technical team.

Terms and conditions

- Guarantee only valid for products bought direct from Abcam or one of our authorized distributors