

Anti-Superoxide Dismutase 1 antibody ab52950

★★★★★ [2 Abreviews](#) [21 References](#) [画像数 2](#)

製品の概要

| | |
|--------------|---|
| 製品名 | Anti-Superoxide Dismutase 1 antibody |
| 製品の詳細 | Rabbit polyclonal to Superoxide Dismutase 1 |
| 由来種 | Rabbit |
| アプリケーション | 適用あり: WB, IHC-P 適用なし: Flow Cyt |
| 種交差性 | 交差種: Human 非交差種: Mouse, Rat |
| 免疫原 | Synthetic peptide. This information is proprietary to Abcam and/or its suppliers. |
| ポジティブ・コントロール | Jurkat cell lysate, human placenta and HeLa cells. |
| 特記事項 | <p>The Life Science industry has been in the grips of a reproducibility crisis for a number of years. Abcam is leading the way in addressing this with our range of recombinant monoclonal antibodies and knockout edited cell lines for gold-standard validation. Please check that this product meets your needs before purchasing.</p> <p>If you have any questions, special requirements or concerns, please send us an inquiry and/or contact our Support team ahead of purchase. Recommended alternatives for this product can be found below, along with publications, customer reviews and Q&As</p> |

製品の特性

| | |
|--------|---|
| 製品の状態 | Liquid |
| 保存方法 | Shipped at 4°C. Store at +4°C short term (1-2 weeks). Upon delivery aliquot. Store at -20°C. Stable for 12 months at -20°C. |
| バッファー | pH: 7.20 Preservative: 0.01% Sodium azide Constituents: 49% PBS, 50% Glycerol (glycerin, glycerine), 0.05% BSA |
| 精製度 | Immunogen affinity purified |
| ポリ/モノ | ポリクローナル |
| アイソタイプ | IgG |

アプリケーション

The Abpromise guarantee

Abpromise保証は、次のテスト済みアプリケーションにおけるab52950の使用に適用されず

アプリケーションノートには、推奨の開始希釈率がありますが、適切な希釈率につきましてはご検討ください。

| アプリケーション | Abreviews | 特記事項 |
|----------|-----------|--|
| WB | ★★★★★ (2) | 1/5000. Detects a band of approximately 16 kDa (predicted molecular weight: 16 kDa). |
| IHC-P | | 1/50 - 1/100. Antigen retrieval is not essential but may optimise staining. |

追加情報

Is unsuitable for Flow Cyt.

ターゲット情報

機能

Destroys radicals which are normally produced within the cells and which are toxic to biological systems.

関連疾患

Defects in SOD1 are the cause of amyotrophic lateral sclerosis type 1 (ALS1) [MIM:105400]. ALS1 is a familial form of amyotrophic lateral sclerosis, a neurodegenerative disorder affecting upper and lower motor neurons and resulting in fatal paralysis. Sensory abnormalities are absent. Death usually occurs within 2 to 5 years. The etiology of amyotrophic lateral sclerosis is likely to be multifactorial, involving both genetic and environmental factors. The disease is inherited in 5-10% of cases leading to familial forms.

配列類似性

Belongs to the Cu-Zn superoxide dismutase family.

翻訳後修飾

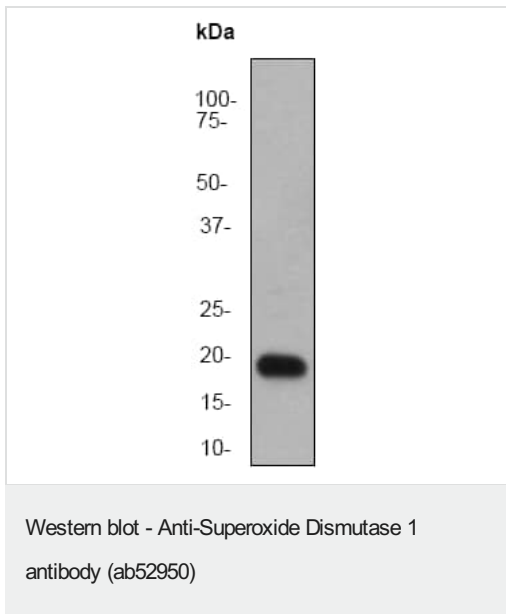
Unlike wild-type protein, the pathogenic variants ALS1 Arg-38, Arg-47, Arg-86 and Ala-94 are polyubiquitinated by RNF19A leading to their proteasomal degradation. The pathogenic variants ALS1 Arg-86 and Ala-94 are ubiquitinated by MARCH5 leading to their proteasomal degradation.

The ditryptophan cross-link at Trp-33 is responsible for the non-disulfide-linked homodimerization. Such modification might only occur in extreme conditions and additional experimental evidence is required.

細胞内局在

Cytoplasm. The pathogenic variants ALS1 Arg-86 and Ala-94 gradually aggregates and accumulates in mitochondria.

画像



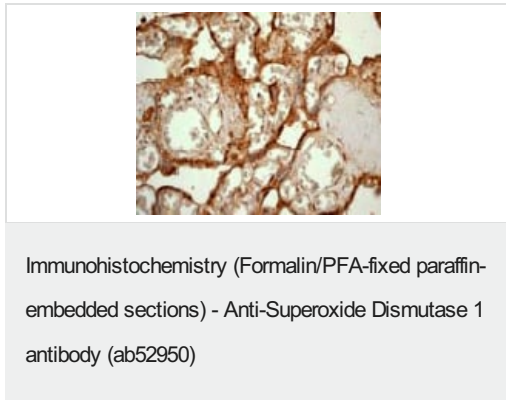
Anti-Superoxide Dismutase 1 antibody (ab52950) at 1/5000 dilution + Jurkat cell lysate at 10 µg

Secondary

goat anti-rabbit HRP at 1/2000 dilution

Predicted band size: 16 kDa

Observed band size: 16 kDa



ab52950 at 1/50 dilution staining Superoxide Dismutase 1 in human placenta by Immunohistochemistry, Paraffin embedded tissue.

Please note: All products are "FOR RESEARCH USE ONLY. NOT FOR USE IN DIAGNOSTIC PROCEDURES"

Our Abpromise to you: Quality guaranteed and expert technical support

- Replacement or refund for products not performing as stated on the datasheet
- Valid for 12 months from date of delivery
- Response to your inquiry within 24 hours
- We provide support in Chinese, English, French, German, Japanese and Spanish
- Extensive multi-media technical resources to help you
- We investigate all quality concerns to ensure our products perform to the highest standards

If the product does not perform as described on this datasheet, we will offer a refund or replacement. For full details of the Abpromise, please visit <https://www.abcam.co.jp/abpromise> or contact our technical team.

Terms and conditions

- Guarantee only valid for products bought direct from Abcam or one of our authorized distributors