

Anti-Superoxide Dismutase 1 antibody ab13498

★★★★★ [23 Abreviews](#) [171 References](#) [画像数 1](#)

製品の概要

製品名	Anti-Superoxide Dismutase 1 antibody
製品の詳細	Rabbit polyclonal to Superoxide Dismutase 1
由来種	Rabbit
アプリケーション	適用あり: IHC-P, ELISA, IHC-Fr, ICC/IF, IP, WB
種交差性	交差種: Mouse, Rat, Sheep, Rabbit, Hamster, Cow, Dog, Human, Pig, Xenopus laevis, Drosophila melanogaster, Fish, Monkey, African green monkey, Coral, Mollusk
免疫原	Synthetic peptide corresponding to Human Superoxide Dismutase 1. Database link: P00441
ポジティブ・コントロール	WB: HeLa (Human epithelial cell line from cervix adenocarcinoma)
特記事項	<p>The Life Science industry has been in the grips of a reproducibility crisis for a number of years. Abcam is leading the way in addressing this with our range of recombinant monoclonal antibodies and knockout edited cell lines for gold-standard validation. Please check that this product meets your needs before purchasing.</p> <p>If you have any questions, special requirements or concerns, please send us an inquiry and/or contact our Support team ahead of purchase. Recommended alternatives for this product can be found below, along with publications, customer reviews and Q&As</p>

製品の特性

製品の状態	Liquid
保存方法	Shipped at 4°C. Store at +4°C short term (1-2 weeks). Upon delivery aliquot. Store at -20°C or -80°C. Avoid freeze / thaw cycle.
バッファー	Preservative: 0.1% Sodium azide Constituents: PBS, 50% Glycerol
精製度	Immunogen affinity purified
特記事項 (精製)	This antibody was purified on an antigen coupled sepharose column.
ポリ/モノ	ポリクローナル
アイソタイプ	IgG

アプリケーション

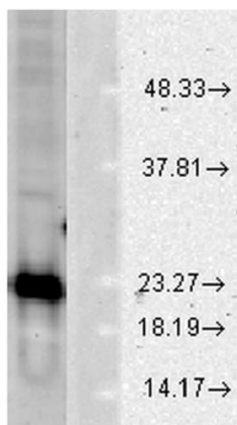
The Abpromise guarantee **Abpromise保証は、次のテスト済みアプリケーションにおけるab13498の使用に適用されます**
 アプリケーションノートには、推奨の開始希釈率がありますが、適切な希釈率につきましてはご確認ください。

アプリケーション	Abreviews	特記事項
IHC-P		Use at an assay dependent concentration.
ELISA		Use at an assay dependent concentration. See Downs et al 2002.
IHC-Fr	★★★★★ (3)	Use at an assay dependent concentration.
ICC/IF	★★★★★ (6)	Use at an assay dependent concentration. See Abreview.
IP		Use at an assay dependent concentration. See Shinder et al 2001.
WB	★★★★★ (13)	1/5000. Detects a band of approximately 23 kDa (predicted molecular weight: 16 kDa).

ターゲット情報

機能	Destroys radicals which are normally produced within the cells and which are toxic to biological systems.
関連疾患	Defects in SOD1 are the cause of amyotrophic lateral sclerosis type 1 (ALS1) [MIM:105400]. ALS1 is a familial form of amyotrophic lateral sclerosis, a neurodegenerative disorder affecting upper and lower motor neurons and resulting in fatal paralysis. Sensory abnormalities are absent. Death usually occurs within 2 to 5 years. The etiology of amyotrophic lateral sclerosis is likely to be multifactorial, involving both genetic and environmental factors. The disease is inherited in 5-10% of cases leading to familial forms.
配列類似性	Belongs to the Cu-Zn superoxide dismutase family.
翻訳後修飾	Unlike wild-type protein, the pathogenic variants ALS1 Arg-38, Arg-47, Arg-86 and Ala-94 are polyubiquitinated by RNF19A leading to their proteasomal degradation. The pathogenic variants ALS1 Arg-86 and Ala-94 are ubiquitinated by MARCH5 leading to their proteasomal degradation. The ditryptophan cross-link at Trp-33 is responsible for the non-disulfide-linked homodimerization. Such modification might only occur in extreme conditions and additional experimental evidence is required.
細胞内局在	Cytoplasm. The pathogenic variants ALS1 Arg-86 and Ala-94 gradually aggregates and accumulates in mitochondria.

画像



Western blot - Anti-Superoxide Dismutase 1 antibody (ab13498)

Anti-Superoxide Dismutase 1 antibody (ab13498) at 0.2 µg/ml (2 hrs at RT) + HeLa (Human epithelial cell line from cervix adenocarcinoma) lysate at 15 µg

Secondary

Donkey Anti-Rabbit IgG HRP 1 hr at RT

Predicted band size: 16 kDa

Observed band size: 23 kDa

Block: 1.5% BSA.

Please note: All products are "FOR RESEARCH USE ONLY. NOT FOR USE IN DIAGNOSTIC PROCEDURES"

Our Abpromise to you: Quality guaranteed and expert technical support

- Replacement or refund for products not performing as stated on the datasheet
- Valid for 12 months from date of delivery
- Response to your inquiry within 24 hours
- We provide support in Chinese, English, French, German, Japanese and Spanish
- Extensive multi-media technical resources to help you
- We investigate all quality concerns to ensure our products perform to the highest standards

If the product does not perform as described on this datasheet, we will offer a refund or replacement. For full details of the Abpromise, please visit <https://www.abcam.co.jp/abpromise> or contact our technical team.

Terms and conditions

- Guarantee only valid for products bought direct from Abcam or one of our authorized distributors