

### Anti-Sumo 3 antibody ab5317

★★★★★ [1 Abreviews](#) [3 References](#) [画像数 1](#)

#### 製品の概要

製品名	Anti-Sumo 3 antibody
製品の詳細	Rabbit polyclonal to Sumo 3
由来種	Rabbit
アプリケーション	<b>適用あり:</b> WB
種交差性	<b>交差種:</b> Arabidopsis thaliana
免疫原	Recombinant full length protein corresponding to Arabidopsis thaliana Sumo 3 aa 1 to the C-terminus. Database link: <a href="#">Q9FLP5</a>

#### 特記事項

The Life Science industry has been in the grips of a reproducibility crisis for a number of years. Abcam is leading the way in addressing this with our range of recombinant monoclonal antibodies and knockout edited cell lines for gold-standard validation. Please check that this product meets your needs before purchasing.

If you have any questions, special requirements or concerns, please send us an inquiry and/or contact our Support team ahead of purchase. Recommended alternatives for this product can be found below, along with publications, customer reviews and Q&As

#### 製品の特性

製品の状態	Liquid
保存方法	Shipped at 4°C. Upon delivery aliquot and store at -20°C or -80°C. Avoid repeated freeze / thaw cycles.
精製度	Whole antiserum
ポリモノ	ポリクローナル
アイソタイプ	IgG

#### アプリケーション

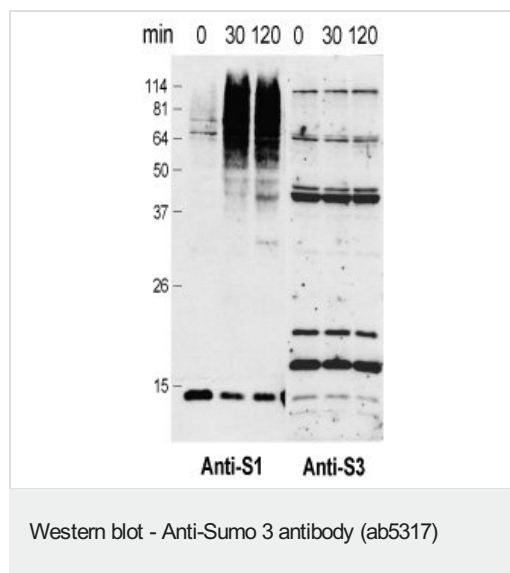
**The Abpromise guarantee** Abpromise保証は、次のテスト済みアプリケーションにおけるab5317の使用に適用されます  
アプリケーションノートには、推奨の開始希釈率がありますが、適切な希釈率につきましてはご検討ください。

アプリケーション	Abreviews	特記事項
WB	★★★★★ (1)	1/1000. Predicted molecular weight: 12 kDa.

## ターゲット情報

<b>機能</b>	Ubiquitin-like protein which can be covalently attached to target lysines either as a monomer or as a lysine-linked polymer. Does not seem to be involved in protein degradation and may function as an antagonist of ubiquitin in the degradation process. Plays a role in a number of cellular processes such as nuclear transport, DNA replication and repair, mitosis and signal transduction. Covalent attachment to its substrates requires prior activation by the E1 complex SAE1-SAE2 and linkage to the E2 enzyme UBE2I, and can be promoted by an E3 ligase such as PIAS1-4, RANBP2 or CBX4.
<b>組織特異性</b>	Expressed predominantly in liver.
<b>配列類似性</b>	Belongs to the ubiquitin family. SUMO subfamily. Contains 1 ubiquitin-like domain.
<b>翻訳後修飾</b>	Polymeric chains can be formed through Lys-11 cross-linking. Cleavage of precursor form by SENP1, SENP2 or SENP5 is necessary for function.
<b>細胞内局在</b>	Cytoplasm.

## 画像



Western blots of SUMO1 and SUMO3 antibody on Arabidopsis extracts heat treated for the indicated times by moving them from 24 to 37 degrees C. The panel on the left was using [ab5316](#), the panel on the right was using [ab5317](#) - both antibodies were used at a dilution of 1/1000.

Western blots of SUMO1 and SUMO3 antibody on Arabidopsis extracts heat treated for the indicated times by moving them from 24 to 37 degrees C. The panel on the left was using [ab5316](#), the panel on the right was using [ab5317](#) - both antibodies were used at a dilution of 1/1000.

**Please note:** All products are "FOR RESEARCH USE ONLY. NOT FOR USE IN DIAGNOSTIC PROCEDURES"

## Our Abpromise to you: Quality guaranteed and expert technical support

- Replacement or refund for products not performing as stated on the datasheet
- Valid for 12 months from date of delivery
- Response to your inquiry within 24 hours

- We provide support in Chinese, English, French, German, Japanese and Spanish
- Extensive multi-media technical resources to help you
- We investigate all quality concerns to ensure our products perform to the highest standards

If the product does not perform as described on this datasheet, we will offer a refund or replacement. For full details of the Abpromise, please visit <https://www.abcam.co.jp/abpromise> or contact our technical team.

### **Terms and conditions**

---

- Guarantee only valid for products bought direct from Abcam or one of our authorized distributors