


### Anti-Sumo 2 + Sumo 3 antibody [EPR4602] ab109005

リコンビナント RabMAb

★★★★☆ **3 Abreviews** **11 References** **画像数 6**

#### 製品の概要

|              |  |
|--------------|--|
| 製品名          | Anti-Sumo 2 + Sumo 3 antibody [EPR4602]  |
| 製品の詳細        | Rabbit monoclonal [EPR4602] to Sumo 2 + Sumo 3   |
| 由来種          | Rabbit   |
| アプリケーション     | <b>適用あり:</b> WB, IHC-P, ICC/IF<br><b>適用なし:</b> Flow Cyt or IP  |
| 種交差性         | <b>交差種:</b> Human<br><b>交差が予測される動物種:</b> Mouse, Rat   |
| 免疫原          | Synthetic peptide. This information is proprietary to Abcam and/or its suppliers.  |
| ポジティブ・コントロール | HeLa, Jurkat, 293T, SW480 and HL60 cell lysates; Human colonic and hepatocellular carcinoma tissues.   |
| 特記事項         | <p>This product is a recombinant monoclonal antibody, which offers several advantages including:</p> <ul style="list-style-type: none"><li>- High batch-to-batch consistency and reproducibility</li><li>- Improved sensitivity and specificity</li><li>- Long-term security of supply</li><li>- Animal-free production</li></ul> <p>For more information <a href="#">see here</a>.</p> <p>Our RabMAb<sup>®</sup> technology is a patented hybridoma-based technology for making rabbit monoclonal antibodies. For details on our patents, please refer to <a href="#">RabMAb<sup>®</sup> patents</a>.</p> |

#### 製品の特性

|       |   |
|-------|---|
| 製品の状態 | Liquid  |
| 保存方法  | Shipped at 4°C. Store at +4°C short term (1-2 weeks). Upon delivery aliquot. Store at -20°C. Stable for 12 months at -20°C.                         |
| バッファー | pH: 7.20<br>Preservative: 0.01% Sodium azide<br>Constituents: 9% PBS, 40% Glycerol (glycerin, glycerine), 0.05% BSA, 50% Tissue culture supernatant |
| 精製度   | Protein A purified  |
| ポリ/モノ | モノクローナル   |

クローン名                   EPR4602  
 アイソタイプ               IgG

**アプリケーション**

**The Abpromise guarantee**           **Abpromise保証は、** 次のテスト済みアプリケーションにおけるab109005の使用に適用されず  
 アプリケーションノートには、推奨の開始希釈率がありますが、適切な希釈率につきましてはご検討ください。

| アプリケーション | Abreviews | 特記事項   |
|----------|-----------|--|
| WB       | ★★★★★ (2) | 1/1000 - 1/10000. Predicted molecular weight: 11 kDa.  |
| IHC-P    |           | 1/100 - 1/250. Perform heat mediated antigen retrieval with citrate buffer pH 6 before commencing with IHC staining protocol. Heat up to 98 &degC, below boiling, and then let cool for 10-20 min. |
| ICC/IF   | ★★★★★ (1) | 1/400.   |

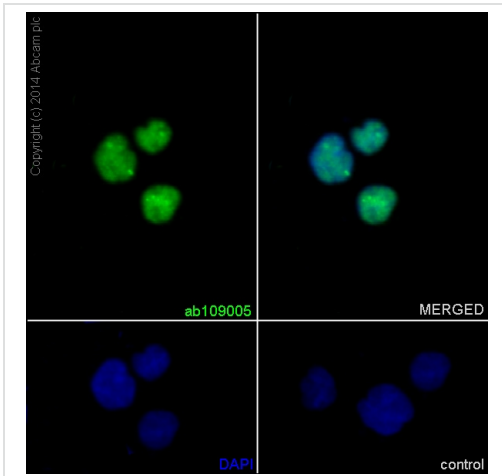
**追加情報**                               Is unsuitable for Flow Cyt or IP.

**ターゲット情報**

**関連性**                               SUMO proteins, such as Sumo 2 and Sumo 3, post-translationally modify numerous cellular proteins and affect their metabolism and function. However, unlike ubiquitination, which targets proteins for degradation, sumoylation participates in a number of cellular processes, such as nuclear transport, transcriptional regulation, apoptosis, and protein stability. Sumo 2 and Sumo 3 are highly homologous, hence it is very difficult to produce antibodies which distinguish them.

**細胞内局在**                           Cytoplasmic (SUMO3) and Nuclear (SUMO2)

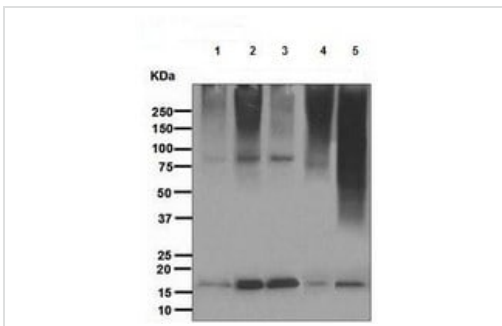
**画像**



Immunocytochemistry/ Immunofluorescence - Anti-Sumo 2 + Sumo 3 antibody [EPR4602] (ab109005)

Immunocytochemistry/Immunofluorescence analysis of SW480 (human colorectal adenocarcinoma) cells labelling Sumo 2+3 (green) with purified ab109005 at 1/400. Cells were fixed with 4% Paraformaldehyde and permeabilized with 0.1% Triton X-100. **ab150077**, Alexa Fluor® 488-conjugated goat anti-rabbit IgG (1/1000) was used as the secondary antibody. Nuclei were stained blue with DAPI.

Secondary Only Control: PBS was used instead of the primary antibody as the negative control.



Western blot - Anti-Sumo 2 + Sumo 3 antibody [EPR4602] (ab109005)

**All lanes** : Anti-Sumo 2 + Sumo 3 antibody [EPR4602] (ab109005) at 1/1000 dilution

**Lane 1** : HeLa cell lysate

**Lane 2** : Jurkat cell lysate

**Lane 3** : 293T (Human embryonic kidney epithelial cell) cell lysate

**Lane 4** : SW480 cell lysate

**Lane 5** : HL60 cell lysate

Lysates/proteins at 10 µg per lane.

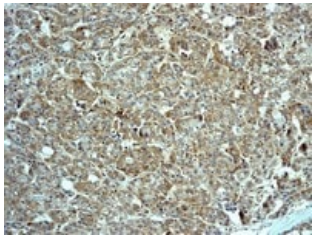
**Predicted band size:** 11 kDa



Immunohistochemistry (Formalin/PFA-fixed paraffin-embedded sections) - Anti-Sumo 2 + Sumo 3 antibody [EPR4602] (ab109005)

ab109005 at 1/100 dilution, staining Sumo 2+3 in Human colon by Immunohistochemistry, Paraffin-embedded tissue.

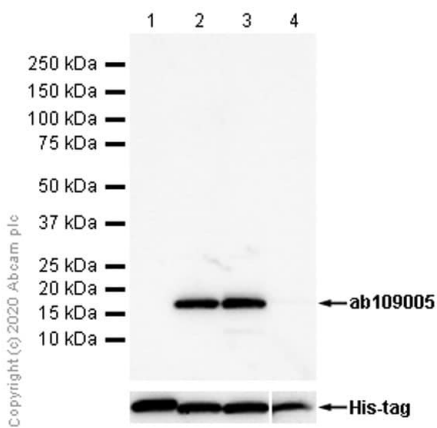
Perform heat mediated antigen retrieval with citrate buffer pH 6 before commencing with IHC staining protocol.



Immunohistochemistry (Formalin/PFA-fixed paraffin-embedded sections) - Anti-Sumo 2 + Sumo 3 antibody [EPR4602] (ab109005)

ab109005 at 1/100 dilution, staining Sumo 2+3 in Human hepatocellular carcinoma by Immunohistochemistry, Paraffin-embedded tissue.

Perform heat mediated antigen retrieval with citrate buffer pH 6 before commencing with IHC staining protocol.



Western blot - Anti-Sumo 2 + Sumo 3 antibody [EPR4602] (ab109005)

**All lanes** : Anti-Sumo 2 + Sumo 3 antibody [EPR4602] (ab109005) at 1/1000 dilution

**Lane 1** : Recombinant Human Sumo 1 protein ([ab140417](#)) at 0.01 µg

**Lane 2** : Recombinant Human Sumo 2 protein ([ab140420](#)) at 0.01 µg

**Lane 3** : Recombinant Human Sumo 3 protein ([ab140414](#)) at 0.01 µg

**Lane 4** : Recombinant Human Sumo 4 protein ([ab157025](#)) at 0.1 µg

**Secondary**

**All lanes** : Goat Anti-Rabbit IgG H&L (HRP) ([ab97051](#)) at 1/20000 dilution

Developed using the ECL technique.

**Predicted band size:** 11 kDa

**Observed band size:** 16 kDa

**Exposure time:** 20 seconds

**Blocking buffer:** 5% NFDm/TBST

### Why choose a recombinant antibody?



**Research with confidence**  
Consistent and reproducible results



**Long-term and scalable supply**  
Recombinant technology



**Success from the first experiment**  
Confirmed specificity



**Ethical standards compliant**  
Animal-free production

Anti-Sumo 2 + Sumo 3 antibody [EPR4602]  
(ab109005)

**Please note:** All products are "FOR RESEARCH USE ONLY. NOT FOR USE IN DIAGNOSTIC PROCEDURES"

### Our Abpromise to you: Quality guaranteed and expert technical support

---

- Replacement or refund for products not performing as stated on the datasheet
- Valid for 12 months from date of delivery
- Response to your inquiry within 24 hours
- We provide support in Chinese, English, French, German, Japanese and Spanish
- Extensive multi-media technical resources to help you
- We investigate all quality concerns to ensure our products perform to the highest standards

If the product does not perform as described on this datasheet, we will offer a refund or replacement. For full details of the Abpromise, please visit <https://www.abcam.co.jp/abpromise> or contact our technical team.

### Terms and conditions

---

- Guarantee only valid for products bought direct from Abcam or one of our authorized distributors