

Anti-Sulfatase 2/SULF2 antibody [2B4] ab113405

★★★★★ [1 Abreviews](#) [4 References](#) [画像数 1](#)

製品の概要

製品名	Anti-Sulfatase 2/SULF2 antibody [2B4]
製品の詳細	Mouse monoclonal [2B4] to Sulfatase 2/SULF2
由来種	Mouse
特異性	ab113405 shows no cross-reactivity with Sulfatase 1
アプリケーション	適用あり: IHC-P
種交差性	交差種: Human
免疫原	Recombinant full length protein corresponding to Human Sulfatase 2/SULF2.
エピトープ	ab113405 recognises an epitope located in the C terminal domain of Sulfatase 2/SULF2.
ポジティブ・コントロール	Sulfatase 2/SULF2 transfected HEK29 cells or non-small-cell Human lung carcinoma tissue
特記事項	<p>The Life Science industry has been in the grips of a reproducibility crisis for a number of years. Abcam is leading the way in addressing this with our range of recombinant monoclonal antibodies and knockout edited cell lines for gold-standard validation. Please check that this product meets your needs before purchasing.</p> <p>If you have any questions, special requirements or concerns, please send us an inquiry and/or contact our Support team ahead of purchase. Recommended alternatives for this product can be found below, along with publications, customer reviews and Q&As</p>

製品の特性

製品の状態	Liquid
保存方法	Shipped at 4°C. Upon delivery aliquot and store at -20°C. Avoid freeze / thaw cycles.
バッファー	Preservative: 0.09% Sodium azide Constituent: 99% PBS
精製度	Protein G purified
ポリ/モノ	モノクローナル
クローン名	2B4
アイソタイプ	IgG1

アプリケーション

The Abpromise guarantee

Abpromise保証は、次のテスト済みアプリケーションにおけるab113405の使用に適用されます

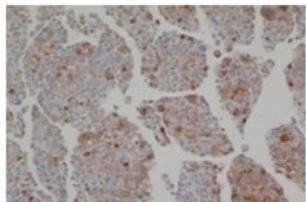
アプリケーションノートには、推奨の開始希釈率がありますが、適切な希釈率につきましてはご検討ください。

アプリケーション	Abreviews	特記事項
IHC-P		1/25. Perform heat mediated antigen retrieval via the pressure cooker method before commencing with IHC staining protocol. Sodium citrate buffer pH 6.0 is recommended for this purpose.

ターゲット情報

機能	Exhibits arylsulfatase activity and highly specific endoglucosamine-6-sulfatase activity. It can remove sulfate from the C-6 position of glucosamine within specific subregions of intact heparin.
組織特異性	Expressed at highest levels in the ovary, skeletal muscle, stomach, brain, uterus, heart, kidney and placenta.
配列類似性	Belongs to the sulfatase family.
翻訳後修飾	The conversion to 3-oxoalanine (also known as C-formylglycine, FGly), of a serine or cysteine residue in prokaryotes and of a cysteine residue in eukaryotes, is critical for catalytic activity.
細胞内局在	Endoplasmic reticulum. Golgi apparatus > Golgi stack. Cell surface. Also localized on the cell surface.

画像



Paraffin embedded HEK293 cells transfected with Sulfatase 2/SULF2 stained with ab113405.

Immunohistochemistry (Formalin/PFA-fixed paraffin-embedded sections) - Anti-Sulfatase 2/SULF2 antibody [2B4] (ab113405)

Please note: All products are "FOR RESEARCH USE ONLY. NOT FOR USE IN DIAGNOSTIC PROCEDURES"

Our Abpromise to you: Quality guaranteed and expert technical support

- Replacement or refund for products not performing as stated on the datasheet
- Valid for 12 months from date of delivery
- Response to your inquiry within 24 hours
- We provide support in Chinese, English, French, German, Japanese and Spanish
- Extensive multi-media technical resources to help you
- We investigate all quality concerns to ensure our products perform to the highest standards

If the product does not perform as described on this datasheet, we will offer a refund or replacement. For full details of the Abpromise, please visit <https://www.abcam.co.jp/abpromise> or contact our technical team.

Terms and conditions

- Guarantee only valid for products bought direct from Abcam or one of our authorized distributors