

# Anti-Stromal interaction molecule 1 antibody ab62031

★★★★☆ [2 Abreviews](#) [5 References](#) [画像数 3](#)

### 製品の概要

---

製品名	Anti-Stromal interaction molecule 1 antibody
製品の詳細	Rabbit polyclonal to Stromal interaction molecule 1
由来種	Rabbit
特異性	ab62031 detects the larger isoform of Stromal interaction molecule 1 only. It is predicted to have no cross-reactivity with Stromal interaction molecule 2.
アプリケーション	<b>適用あり:</b> ICC/IF, WB, IHC-P
種交差性	<b>交差種:</b> Mouse
免疫原	Raised against a 24 amino acid synthetic peptide from near the carboxy terminus of Human Stromal interaction molecule 1 (GenBank accession no. NP_003147).
ポジティブ・コントロール	Mouse thymus tissue lysate
特記事項	<p>The Life Science industry has been in the grips of a reproducibility crisis for a number of years. Abcam is leading the way in addressing this with our range of recombinant monoclonal antibodies and knockout edited cell lines for gold-standard validation. Please check that this product meets your needs before purchasing.</p> <p>If you have any questions, special requirements or concerns, please send us an inquiry and/or contact our Support team ahead of purchase. Recommended alternatives for this product can be found below, along with publications, customer reviews and Q&amp;As</p>

### 製品の特性

---

製品の状態	Liquid
保存方法	Shipped at 4°C. Store at +4°C.
バッファー	pH: 7.2 Preservative: 0.02% Sodium azide Constituent: PBS
精製度	Immunogen affinity purified
ポリ/モノ	ポリクローナル
アイソタイプ	IgG

### アプリケーション

## The Abpromise guarantee

**Abpromise保証は、次のテスト済みアプリケーションにおけるab62031の使用に適用されます**

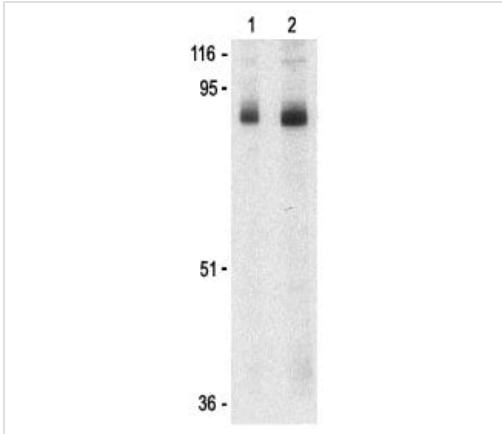
アプリケーションノートには、推奨の開始希釈率がありますが、適切な希釈率につきましてはご検討ください。

アプリケーション	Abreviews	特記事項
ICC/IF	★★★★★ (1)	Use at an assay dependent concentration.
WB	★★★★★ (1)	Use a concentration of 1 - 2 µg/ml. Detects a band of approximately 90 kDa (predicted molecular weight: 77 kDa).
IHC-P		Use a concentration of 2.5 µg/ml.

## ターゲット情報

機能	Plays a role in mediating Ca(2+) influx following depletion of intracellular Ca(2+) stores. Acts as Ca(2+) sensor in the endoplasmic reticulum via its EF-hand domain. Upon Ca(2+) depletion, translocates from the endoplasmic reticulum to the plasma membrane where it activates the Ca(2+) release-activated Ca(2+) (CRAC) channel subunit, TMEM142A/ORAI1.
組織特異性	Ubiquitously expressed in various human primary cells and tumor cell lines.
関連疾患	Defects in STIM1 are the cause of immune dysfunction with T-cell inactivation due to calcium entry defect type 2 (IDTICED2) [MIM:612783]. IDTICED2 is an immune disorder characterized by recurrent infections, impaired T-cell activation and proliferative response, decreased T-cell production of cytokines, lymphadenopathy, and normal lymphocytes counts and serum immunoglobulin levels. Additional features include thrombocytopenia, autoimmune hemolytic anemia, non-progressive myopathy, partial iris hypoplasia, hepatosplenomegaly and defective enamel dentition.
配列類似性	Contains 1 EF-hand domain. Contains 1 SAM (sterile alpha motif) domain.
ドメイン	The microtubule tip localization signal (MtLS) motif; mediates interaction with MAPRE1 and targeting to the growing microtubule plus ends.
翻訳後修飾	Glycosylation is required for cell surface expression. Phosphorylated predominantly on Ser residues.
細胞内局在	Cell membrane. Endoplasmic reticulum membrane. Cytoplasm > cytoskeleton. Translocates from the endoplasmic reticulum to the cell membrane in response to a depletion of intracellular calcium. Associated with the microtubule network at the growing distal tip of microtubules.

## 画像



Western blot - Anti-Stromal interaction molecule 1 antibody (ab62031)

**Lane 1** : Anti-Stromal interaction molecule 1 antibody (ab62031) at 1  $\mu\text{g/ml}$

**Lane 2** : Anti-Stromal interaction molecule 1 antibody (ab62031) at 2  $\mu\text{g/ml}$

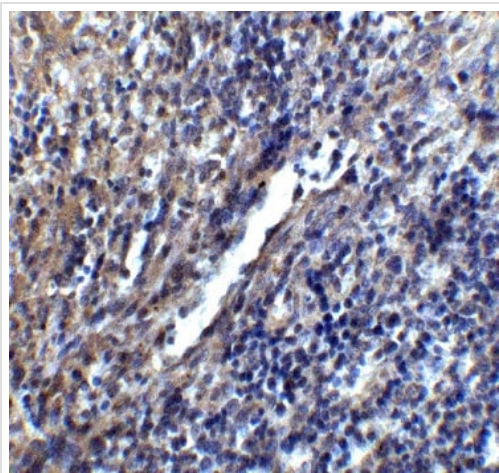
**All lanes** : Mouse thymus tissue lysate

Lysates/proteins at 15  $\mu\text{g}$  per lane.

**Predicted band size:** 77 kDa

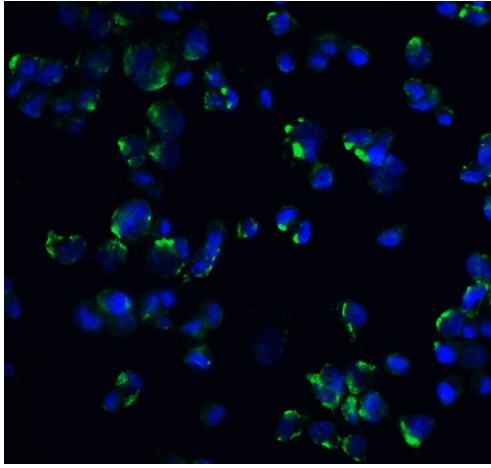
**Observed band size:** 90 kDa

**Additional bands at:** 116 kDa. We are unsure as to the identity of these extra bands.



Immunohistochemistry (Formalin/PFA-fixed paraffin-embedded sections) - Anti-Stromal interaction molecule 1 antibody (ab62031)

Immunohistochemistry (Formalin-fixed paraffin embedded sections) of mouse spleen tissue labeling Stromal interaction molecule 1 with Anti-Stromal interaction molecule 1 antibody (ab62031) at 5 $\mu\text{g/ml}$ .



Immunofluorescence of Stromal interaction molecule 1 in mouse spleen cells with ab62031 at 20 µg/mL.

Immunocytochemistry/ Immunofluorescence - Anti-Stromal interaction molecule 1 antibody (ab62031)

**Please note:** All products are "FOR RESEARCH USE ONLY. NOT FOR USE IN DIAGNOSTIC PROCEDURES"

### Our Abpromise to you: Quality guaranteed and expert technical support

---

- Replacement or refund for products not performing as stated on the datasheet
- Valid for 12 months from date of delivery
- Response to your inquiry within 24 hours
- We provide support in Chinese, English, French, German, Japanese and Spanish
- Extensive multi-media technical resources to help you
- We investigate all quality concerns to ensure our products perform to the highest standards

If the product does not perform as described on this datasheet, we will offer a refund or replacement. For full details of the Abpromise, please visit <https://www.abcam.co.jp/abpromise> or contact our technical team.

### Terms and conditions

---

- Guarantee only valid for products bought direct from Abcam or one of our authorized distributors