

# Anti-STON2 antibody ab121165

画像数 6

### 製品の概要

製品名	Anti-STON2 antibody
製品の詳細	Rabbit polyclonal to STON2
由来種	Rabbit
アプリケーション	<b>適用あり:</b> IHC-P, ICC, WB
種交差性	<b>交差種:</b> Human
免疫原	Recombinant fragment, corresponding to amino acids 299-437 of Human STON2.
ポジティブ・コントロール	IHC-P: Human fallopian tube tissue; ICC: A431 cells; WB: K562 cell lysate.
特記事項	<p>The Life Science industry has been in the grips of a reproducibility crisis for a number of years. Abcam is leading the way in addressing this with our range of recombinant monoclonal antibodies and knockout edited cell lines for gold-standard validation. Please check that this product meets your needs before purchasing.</p> <p>If you have any questions, special requirements or concerns, please send us an inquiry and/or contact our Support team ahead of purchase. Recommended alternatives for this product can be found below, along with publications, customer reviews and Q&amp;As</p>

### 製品の特性

製品の状態	Liquid
保存方法	Shipped at 4°C. Store at -20°C.
バッファー	pH: 7.20 Preservative: 0.02% Sodium azide Constituents: 40% Glycerol (glycerin, glycerine), 59% PBS
精製度	Immunogen affinity purified
ポリ/モノ	ポリクローナル
アイソタイプ	IgG

### アプリケーション

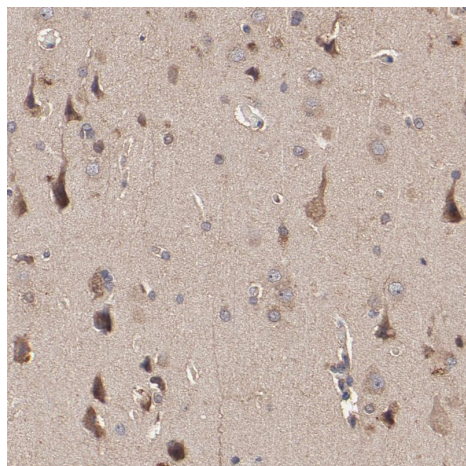
**The Abpromise guarantee**      **Abpromise保証は、** 次のテスト済みアプリケーションにおけるab121165の使用に適用されます  
アプリケーションノートには、推奨の開始希釈率がありますが、適切な希釈率につきましてはご検討ください。

アプリケーション	Abreviews	特記事項
IHC-P		1/50 - 1/200. Perform heat mediated antigen retrieval with citrate buffer pH 6 before commencing with IHC staining protocol. Use buffer at pH 6 for antigen retrieval.
ICC		Use a concentration of 0.25 - 2 µg/ml.
WB		Use a concentration of 0.04 - 0.4 µg/ml. Predicted molecular weight: 101 kDa.

## ターゲット情報

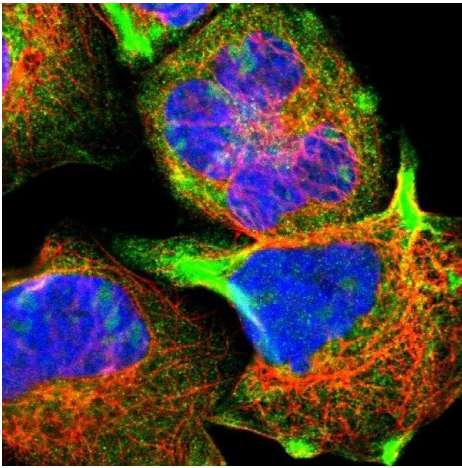
機能	Adapter protein involved in endocytic machinery. May be involved in the vesicle recycling. May facilitate clathrin-coated vesicle uncoating.
組織特異性	Ubiquitous.
配列類似性	Belongs to the Stoned B family. Contains 1 MHD (mu homology) domain. Contains 1 SHD (stonin homology) domain.
ドメイン	The Asn-Pro-Phe (NPF) motifs, which are found in proteins involved in the endocytic pathway, mediate the interaction with the EH domain of SYT1, SYT2, EPS15, EPS15R and ITSN1.
細胞内局在	Cytoplasm. Membrane. Some fraction is membrane-associated.

## 画像



Immunohistochemistry (Formalin/PFA-fixed paraffin-embedded sections) analysis of human cerebral cortex tissue labelling STON2 with ab121165 at 1/50 dilution. Heat mediated antigen retrieval performed with citrate buffer pH 6 before commencing with IHC staining protocol.

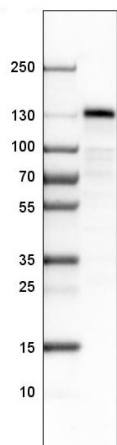
Immunohistochemistry (Formalin/PFA-fixed paraffin-embedded sections) - Anti-STON2 antibody (ab121165)



Immunocytochemistry - Anti-STON2 antibody  
(ab121165)

ab121165 at 4 µg/ml staining STON2 in PFA/Triton X-100 fixed A431 cells by Immunofluorescence(green).

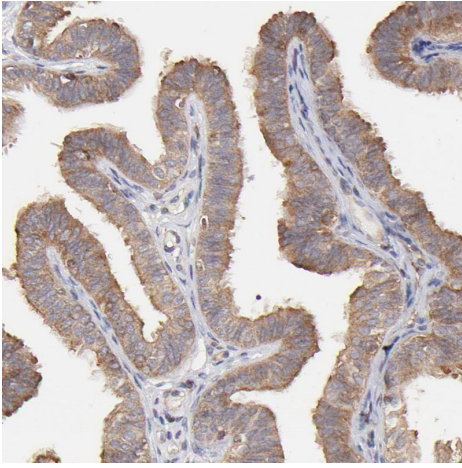
Note: positivity in nucleoli and cytoplasm.



Western blot - Anti-STON2 antibody (ab121165)

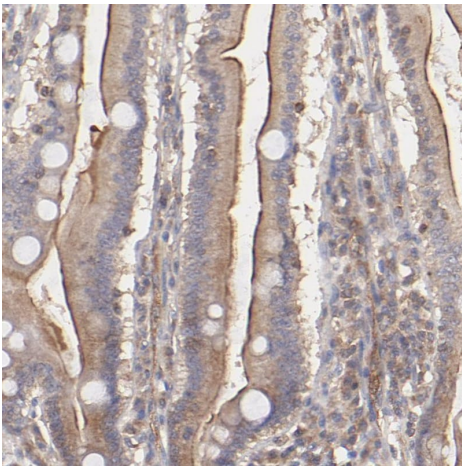
Anti-STON2 antibody (ab121165) + Human cell line K562

**Predicted band size:** 101 kDa



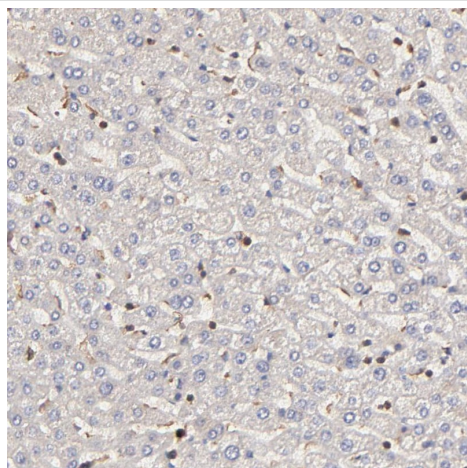
Immunohistochemistry (Formalin/PFA-fixed paraffin-embedded sections) - Anti-STON2 antibody (ab121165)

Immunohistochemistry (Formalin/PFA-fixed paraffin-embedded sections) analysis of human fallopian tube tissue labelling STON2 with ab121165 at 1/50 dilution. Heat mediated antigen retrieval performed with citrate buffer pH 6 before commencing with IHC staining protocol.



Immunohistochemistry (Formalin/PFA-fixed paraffin-embedded sections) - Anti-STON2 antibody (ab121165)

Immunohistochemistry (Formalin/PFA-fixed paraffin-embedded sections) analysis of human duodenum tissue labelling STON2 with ab121165 at 1/50 dilution. Heat mediated antigen retrieval performed with citrate buffer pH 6 before commencing with IHC staining protocol.



Immunohistochemistry (Formalin/PFA-fixed paraffin-embedded sections) - Anti-STON2 antibody (ab121165)

Immunohistochemistry (Formalin/PFA-fixed paraffin-embedded sections) analysis of human liver tissue labelling STON2 with ab121165 at 1/50 dilution. Heat mediated antigen retrieval performed with citrate buffer pH 6 before commencing with IHC staining protocol.

**Please note:** All products are "FOR RESEARCH USE ONLY. NOT FOR USE IN DIAGNOSTIC PROCEDURES"

#### Our Abpromise to you: Quality guaranteed and expert technical support

---

- Replacement or refund for products not performing as stated on the datasheet
- Valid for 12 months from date of delivery
- Response to your inquiry within 24 hours
- We provide support in Chinese, English, French, German, Japanese and Spanish
- Extensive multi-media technical resources to help you
- We investigate all quality concerns to ensure our products perform to the highest standards

If the product does not perform as described on this datasheet, we will offer a refund or replacement. For full details of the Abpromise, please visit <https://www.abcam.co.jp/abpromise> or contact our technical team.

#### Terms and conditions

---

- Guarantee only valid for products bought direct from Abcam or one of our authorized distributors