



# Anti-STK17A antibody ab8418

**1 References** [画像数 3](#)

### 製品の概要

製品名	Anti-STK17A antibody
製品の詳細	Rabbit polyclonal to STK17A
由来種	Rabbit
特異性	No reactivity to DRAK2, DAP or ZIP kinases.
アプリケーション	<b>適用あり:</b> WB, ICC
種交差性	<b>交差種:</b> Human
免疫原	Synthetic peptide corresponding to Human STK17A aa 5-19. Sequence: EKPGSGGSSPGATSGC  (Peptide available as <a href="#">ab8453</a> )
ポジティブ・コントロール	WB: A431 or MOLT4 whole cell lysate. ICC/IF: MOLT4 cells. ICC: MOLT4 cells.
特記事項	<div>  <b>Run BLAST with</b>  <b>Run BLAST with</b> </div> <p>The Life Science industry has been in the grips of a reproducibility crisis for a number of years. Abcam is leading the way in addressing this with our range of recombinant monoclonal antibodies and knockout edited cell lines for gold-standard validation. Please check that this product meets your needs before purchasing.</p> <p>If you have any questions, special requirements or concerns, please send us an inquiry and/or contact our Support team ahead of purchase. Recommended alternatives for this product can be found below, along with publications, customer reviews and Q&amp;As</p>

### 製品の特性

製品の状態	Liquid
保存方法	Shipped at 4°C. Store at +4°C short term (1-2 weeks). Upon delivery aliquot. Store at -20°C. Avoid freeze / thaw cycle.
バッファー	pH: 7.2 Preservative: 0.02% Sodium azide Constituent: PBS
精製度	Affinity purified
ポリ/モノ	ポリクローナル

アイソタイプ	IgG
軽鎖の種類	unknown

アプリケーション

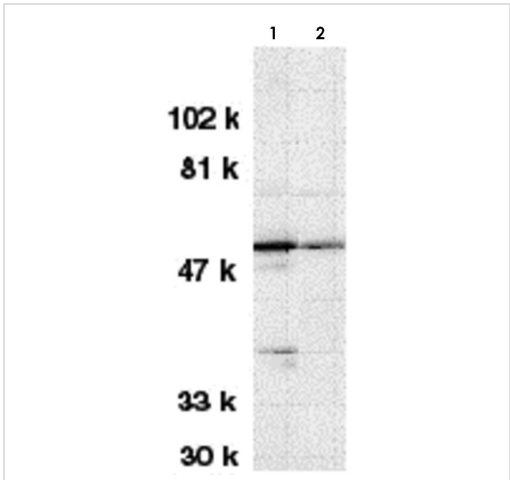
**The Abpromise guarantee**      Abpromise保証は、次のテスト済みアプリケーションにおけるab8418の使用に適用されます  
 アプリケーションノートには、推奨の開始希釈率がありますが、適切な希釈率につきましてはご検討ください。

アプリケーション	Abreviews	特記事項
WB		Use a concentration of 1 µg/ml. Detects a band of approximately 50 kDa.
ICC		Use a concentration of 2 - 10 µg/ml.

ターゲット情報

機能	Acts as a positive regulator of apoptosis. Also acts as a regulator of cellular reactive oxygen species.
組織特異性	Highly expressed in placenta. Lower levels in heart, lung, skeletal muscle, kidney and pancreas.
配列類似性	Belongs to the protein kinase superfamily. CAMK Ser/Thr protein kinase family. DAP kinase subfamily. Contains 1 protein kinase domain.
翻訳後修飾	Autophosphorylated.
細胞内局在	Nucleus.

画像

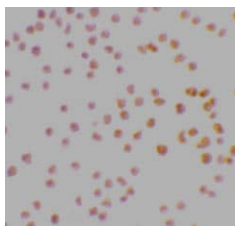


Western blot - Anti-STK17A antibody (ab8418)

**All lanes** : Anti-STK17A antibody (ab8418) at 1 µg/ml

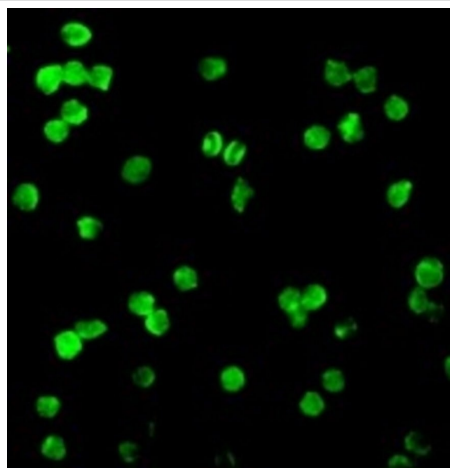
**Lane 1** : MOLT4 whole cell lysate

**Lane 2** : A431 whole cell lysate



ab8418 at 2µg/ml staining STK17A in MOLT4 cells by ICC.

Immunocytochemistry - Anti-STK17A antibody  
(ab8418)



ab8418 at 20µg/ml staining STK17A in MOLT4 cells by ICC/IF.

Immunocytochemistry - Anti-STK17A antibody  
(ab8418)

**Please note:** All products are "FOR RESEARCH USE ONLY. NOT FOR USE IN DIAGNOSTIC PROCEDURES"

### Our Abpromise to you: Quality guaranteed and expert technical support

- Replacement or refund for products not performing as stated on the datasheet
- Valid for 12 months from date of delivery
- Response to your inquiry within 24 hours
- We provide support in Chinese, English, French, German, Japanese and Spanish
- Extensive multi-media technical resources to help you
- We investigate all quality concerns to ensure our products perform to the highest standards

If the product does not perform as described on this datasheet, we will offer a refund or replacement. For full details of the Abpromise, please visit <https://www.abcam.co.jp/abpromise> or contact our technical team.

### Terms and conditions

- Guarantee only valid for products bought direct from Abcam or one of our authorized distributors