

# Anti-STELLAR antibody ab74531

★☆☆☆☆ **1 Abreviews**   **1 References**   画像数 **1**

### 製品の概要

製品名	Anti-STELLAR antibody
製品の詳細	Rabbit polyclonal to STELLAR
由来種	Rabbit
アプリケーション	<b>適用あり:</b> WB
種交差性	<b>交差種:</b> Human
免疫原	Synthetic peptide corresponding to Human STELLAR (C terminal). Database link: <b><u>NP_954980</u></b>
ポジティブ・コントロール	293 cell lysate
特記事項	<p>The Life Science industry has been in the grips of a reproducibility crisis for a number of years. Abcam is leading the way in addressing this with our range of recombinant monoclonal antibodies and knockout edited cell lines for gold-standard validation. Please check that this product meets your needs before purchasing.</p> <p>If you have any questions, special requirements or concerns, please send us an inquiry and/or contact our Support team ahead of purchase. Recommended alternatives for this product can be found below, along with publications, customer reviews and Q&amp;As</p>

### 製品の特性

製品の状態	Liquid
保存方法	Shipped at 4°C. Store at +4°C.
バッファー	pH: 7.2 Preservative: 0.02% Sodium azide Constituent: PBS
精製度	Immunogen affinity purified
ポリ/モノ	ポリクローナル
アイソタイプ	IgG

### アプリケーション

The Abpromise guarantee

**Abpromise保証は、** 次のテスト済みアプリケーションにおけるab74531の使用に適用されます

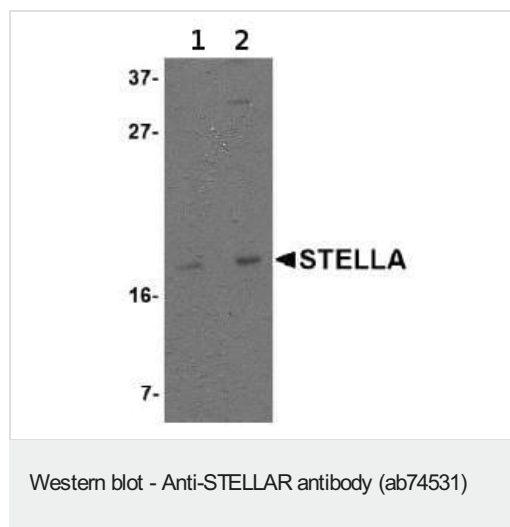
アプリケーションノートには、推奨の開始希釈率がありますが、適切な希釈率につきましてはご確認ください。

アプリケーション	Abreviews	特記事項
WB		Use a concentration of 1 - 2 µg/ml. Detects a band of approximately 18 kDa (predicted molecular weight: 18 kDa).

## ターゲット情報

機能	May play a role in maintaining cell pluripotentiality.
組織特異性	Low expression in testis, ovary and thymus. Expressed in embryonic stem and carcinoma cells. Highly expressed in testicular germ cell tumors.
発生段階	Expressed in fetal ovary.
細胞内局在	Nucleus. Cytoplasm.
製品の状態	Stella is a gene specifically expressed in primordial germ cells, oocytes, preimplantation embryos and pluripotent cells. It encodes a protein with a SAP-like domain and a splicing factor motif-like structure, suggesting possible roles in chromosomal organization or RNA processing. Embryos without Stella are compromised in preimplantation development and rarely reach the blastocyst stage.

## 画像



**Lane 1 :** Anti-STELLAR antibody (ab74531) at 1 µg/ml

**Lane 2 :** Anti-STELLAR antibody (ab74531) at 2 µg/ml

**All lanes :** 293 cell lysate

Lysates/proteins at 15 µg per lane.

**Predicted band size:** 18 kDa

**Observed band size:** 18 kDa

**Please note:** All products are "FOR RESEARCH USE ONLY. NOT FOR USE IN DIAGNOSTIC PROCEDURES"

## Our Abpromise to you: Quality guaranteed and expert technical support

- Replacement or refund for products not performing as stated on the datasheet
- Valid for 12 months from date of delivery
- Response to your inquiry within 24 hours
- We provide support in Chinese, English, French, German, Japanese and Spanish

- Extensive multi-media technical resources to help you
- We investigate all quality concerns to ensure our products perform to the highest standards

If the product does not perform as described on this datasheet, we will offer a refund or replacement. For full details of the Abpromise, please visit <https://www.abcam.co.jp/abpromise> or contact our technical team.

#### **Terms and conditions**

---

- Guarantee only valid for products bought direct from Abcam or one of our authorized distributors