


Anti-STELLAR antibody ab19878

★★★★★ [7 Abreviews](#) [33 References](#) [画像数 3](#)

製品の概要

製品名	Anti-STELLAR antibody
製品の詳細	Rabbit polyclonal to STELLAR
由来種	Rabbit
アプリケーション	適用あり: IHC-Fr, ICC/IF 適用なし: WB
種交差性	交差種: Mouse 交差が予測される動物種: Rat 
免疫原	Synthetic peptide corresponding to Mouse STELLAR aa 100 to the C-terminus (C terminal) conjugated to keyhole limpet haemocyanin. (Peptide available as ab23324)
特記事項	<p>The Life Science industry has been in the grips of a reproducibility crisis for a number of years. Abcam is leading the way in addressing this with our range of recombinant monoclonal antibodies and knockout edited cell lines for gold-standard validation. Please check that this product meets your needs before purchasing.</p> <p>If you have any questions, special requirements or concerns, please send us an inquiry and/or contact our Support team ahead of purchase. Recommended alternatives for this product can be found below, along with publications, customer reviews and Q&As</p>

製品の特性

製品の状態	Liquid
保存方法	Shipped at 4°C. Store at +4°C short term (1-2 weeks). Upon delivery aliquot. Store at -20°C or -80°C. Avoid freeze / thaw cycle.
バッファー	pH: 7.40 Preservative: 0.02% Sodium azide Constituent: PBS
精製度	Batches of this product that have a concentration < 1mg/ml may have BSA added as a stabilising agent. If you would like information about the formulation of a specific lot, please contact our scientific support team who will be happy to help. Immunogen affinity purified

ポリ/モノ

ポリクローナル

アイソタイプ

IgG

アプリケーション

The Abpromise guarantee

Abpromise保証は、次のテスト済みアプリケーションにおけるab19878の使用に適用されます

アプリケーションノートには、推奨の開始希釈率がありますが、適切な希釈率につきましてはご検討ください。

アプリケーション	Abreviews	特記事項
IHC-Fr	★★★★★ (2)	Use a concentration of 4 µg/ml.
ICC/IF	★★★★★ (2)	Use a concentration of 5 µg/ml.

追加情報

Is unsuitable for WB.

ターゲット情報

機能

May play a role in maintaining cell pluripotentiality.

組織特異性

Low expression in testis, ovary and thymus. Expressed in embryonic stem and carcinoma cells.
Highly expressed in testicular germ cell tumors.

発生段階

Expressed in fetal ovary.

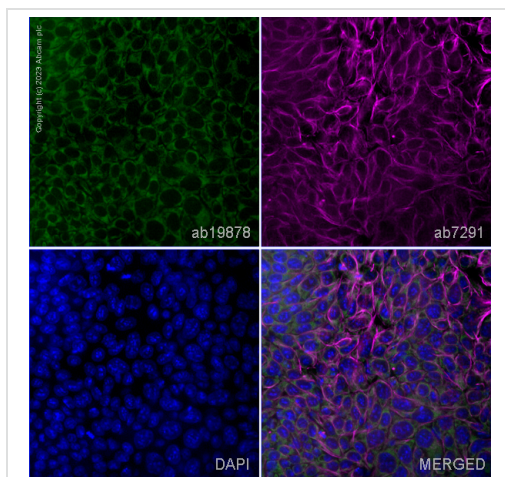
細胞内局在

Nucleus. Cytoplasm.

製品の状態

Stella is a gene specifically expressed in primordial germ cells, oocytes, preimplantation embryos and pluripotent cells. It encodes a protein with a SAP-like domain and a splicing factor motif-like structure, suggesting possible roles in chromosomal organization or RNA processing. Embryos without Stella are compromised in preimplantation development and rarely reach the blastocyst stage.

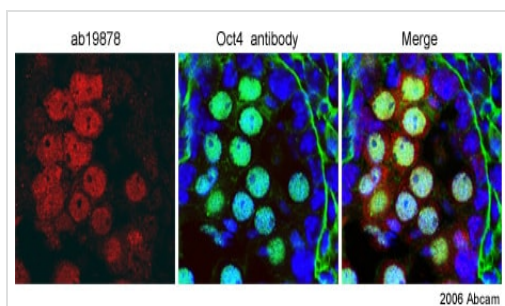
画像



Immunocytochemistry/ Immunofluorescence - Anti-
STELLAR antibody (ab19878)

ab19878 staining STELLAR in mES cells. The cells were fixed with 100% methanol (5 min), permeabilized with 0.1% PBS-Triton X-100 for 5 minutes and then blocked with 1% BSA/10% normal goat serum/0.3M glycine in 0.1%PBS-Tween for 1h. The cells were then incubated overnight at 4°C with ab19878 at 5µg/ml and **ab7291**, Mouse monoclonal [DM1A] to alpha Tubulin - Loading Control. Cells were then incubated with **ab150081**, Goat polyclonal Secondary Antibody to Rabbit IgG - H&L (Alexa Fluor® 488), pre-adsorbed at 1/1000 dilution (shown in green) and **ab150120**, Goat polyclonal Secondary Antibody to Mouse IgG - H&L (Alexa Fluor® 594), pre-adsorbed at 1/1000 dilution (shown in pseudocolour magenta). Nuclear DNA was labelled with DAPI (shown in blue).

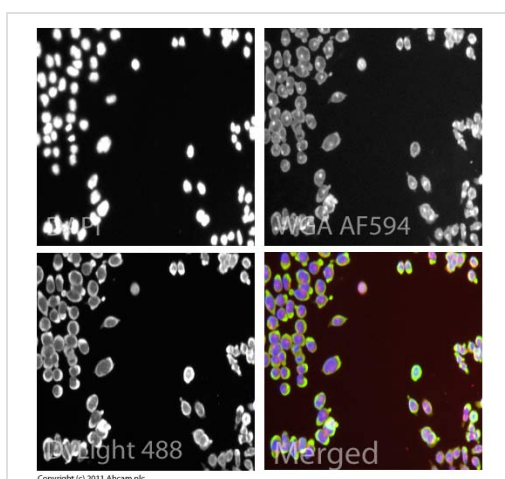
Image was acquired with a high-content analyser (Operetta CLS, Perkin Elmer) and a maximum intensity projection of confocal sections is shown.



Immunohistochemistry (Frozen sections) - Anti-
STELLAR antibody (ab19878)

This image is courtesy of Petra Hajkova, University of Cambridge

The image shows ab19878 staining of a cryosection of mouse embryonic genital ridges (E14.5). The samples were fixed overnight in 4% paraformaldehyde, permeabilised with 0.1% Triton and stained overnight at 4 degrees. 4µg/ml of antibody was used. Staining was in the nucleus and cytoplasm of Oct4-positive cells. The blue fluorescence is DAPI staining of DNA.



Immunocytochemistry/ Immunofluorescence - Anti-
STELLAR antibody (ab19878)

ICC/IF image of ab19878 stained mouse embryonic stem cells. The cells were 4% formaldehyde fixed (10 min) and then incubated in 1%BSA / 10% normal goat serum / 0.3M glycine in 0.1% PBS-Tween for 1h to permeabilise the cells and block non-specific protein-protein interactions. The cells were then incubated with the antibody (ab19878, 5µg/ml) overnight at +4°C. The secondary antibody (green) was **ab96899**, DyLight® 488 goat anti-rabbit IgG (H+L) used at a 1/250 dilution for 1h. Alexa Fluor® 594 WGA was used to label plasma membranes (red) at a 1/200 dilution for 1h. DAPI was used to stain the cell nuclei (blue) at a concentration of 1.43µM.

Our Abpromise to you: Quality guaranteed and expert technical support

- Replacement or refund for products not performing as stated on the datasheet
- Valid for 12 months from date of delivery
- Response to your inquiry within 24 hours

- We provide support in Chinese, English, French, German, Japanese and Spanish
- Extensive multi-media technical resources to help you
- We investigate all quality concerns to ensure our products perform to the highest standards

If the product does not perform as described on this datasheet, we will offer a refund or replacement. For full details of the Abpromise, please visit <https://www.abcam.co.jp/abpromise> or contact our technical team.

Terms and conditions

- Guarantee only valid for products bought direct from Abcam or one of our authorized distributors