


### Anti-Staufen/STAU1 antibody ab73478

★★★★★ [6 Abreviews](#) [21 References](#) [画像数 4](#)

#### 製品の概要

製品名	Anti-Staufen/STAU1 antibody
製品の詳細	Rabbit polyclonal to Staufen/STAU1
由来種	Rabbit
アプリケーション	<b>適用あり:</b> ICC/IF, IP, WB, IHC-P
種交差性	<b>交差種:</b> Human <b>交差が予測される動物種:</b> Mouse, Rat, Horse, Cow, Chimpanzee, Rhesus monkey, Orangutan 
免疫原	Synthetic peptide corresponding to Human Staufen/STAU1 aa 350-450 conjugated to keyhole limpet haemocyanin. Database link: <a href="#">O95793</a>
ポジティブ・コントロール	This antibody gave a positive signal in the following Human Whole Cell Lysates: SK N BE, SW480
特記事項	<p>The Life Science industry has been in the grips of a reproducibility crisis for a number of years. Abcam is leading the way in addressing this with our range of recombinant monoclonal antibodies and knockout edited cell lines for gold-standard validation. Please check that this product meets your needs before purchasing.</p> <p>If you have any questions, special requirements or concerns, please send us an inquiry and/or contact our Support team ahead of purchase. Recommended alternatives for this product can be found below, along with publications, customer reviews and Q&amp;As</p>

#### 製品の特性

製品の状態	Liquid
保存方法	Shipped at 4°C. Store at +4°C short term (1-2 weeks). Upon delivery aliquot. Store at -20°C or -80°C. Avoid freeze / thaw cycle.
バッファー	pH: 7.40 Preservative: 0.02% Sodium azide Constituent: PBS  Batches of this product that have a concentration < 1mg/ml may have BSA added as a stabilising agent. If you would like information about the formulation of a specific lot, please contact our scientific support team who will be happy to help.

精製度	Immunogen affinity purified
ポリ/モノ	ポリクローナル
アイソタイプ	IgG

## アプリケーション

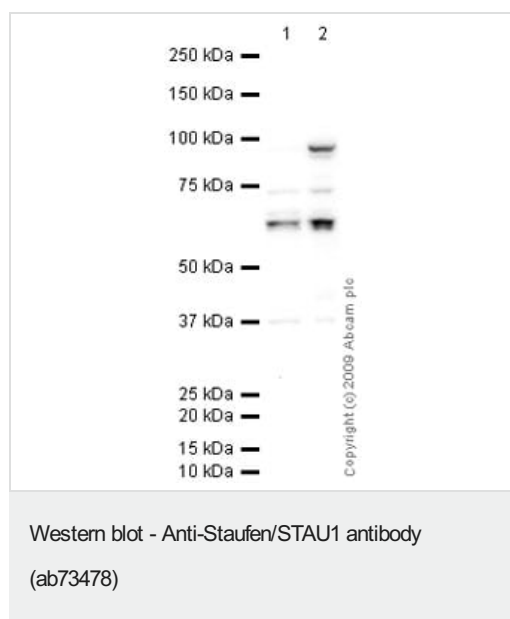
**The Abpromise guarantee** Abpromise保証は、次のテスト済みアプリケーションにおけるab73478の使用に適用されます  
アプリケーションノートには、推奨の開始希釈率がありますが、適切な希釈率につきましてはご検討ください。

アプリケーション	Abreviews	特記事項
ICC/IF	★★★★★ (1)	Use a concentration of 5 µg/ml.
IP	★★★★★ (1)	Use at an assay dependent concentration.
WB	★★★★★ (3)	Use a concentration of 1 µg/ml. Detects a band of approximately 63 kDa (predicted molecular weight: 63 kDa).
IHC-P	★★★★★ (1)	Use a concentration of 5 µg/ml.

## ターゲット情報

機能	Binds double-stranded RNA (regardless of the sequence) and tubulin. May play a role in specific positioning of mRNAs at given sites in the cell by cross-linking cytoskeletal and RNA components, and in stimulating their translation at the site.
組織特異性	Widely expressed. Expressed in brain, pancreas, heart, skeletal muscles, liver, lung, kidney and placenta.
配列類似性	Contains 3 DRBM (double-stranded RNA-binding) domains.
ドメイン	One of the DRDB could be involved in RER binding. The C-terminal contains the tubulin binding domain (TBD).
細胞内局在	Cytoplasm. Rough endoplasmic reticulum. Localizes exclusively with the rough reticulum endoplasmic.

## 画像



**All lanes :** Anti-Staufen/STAU1 antibody (ab73478) at 1 µg/ml

**Lane 1 :** SK N BE (Human neuroblastoma) Whole Cell Lysate

**Lane 2 :** SW480 (Human colon adenocarcinoma cell line) Whole Cell Lysate

Lysates/proteins at 10 µg per lane.

### Secondary

**All lanes :** Goat polyclonal to Rabbit IgG - H&L - Pre-Adsorbed (HRP) at 1/3000 dilution

Developed using the ECL technique.

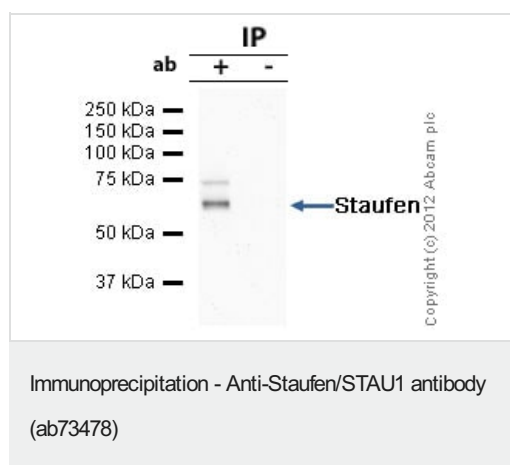
Performed under reducing conditions.

**Predicted band size:** 63 kDa

**Observed band size:** 63 kDa

**Additional bands at:** 95 kDa. We are unsure as to the identity of these extra bands.

**Exposure time:** 3 minutes



Staufen/STAU1 was immunoprecipitated using 0.5mg SW480 whole cell extract, 5µg of Rabbit polyclonal to Staufen/STAU1 and 50µl of protein G magnetic beads (+). No antibody was added to the control (-).

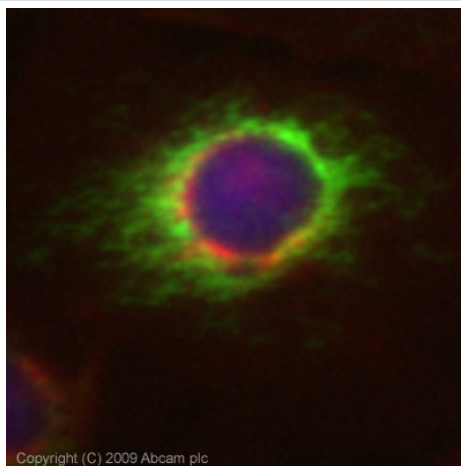
The antibody was incubated under agitation with Protein G beads for 10min, SW480 whole cell extract lysate diluted in RIPA buffer was added to each sample and incubated for a further 10min under agitation.

Proteins were eluted by addition of 40µl SDS loading buffer and incubated for 10min at 70°C; 10µl of each sample was separated on a SDS PAGE gel, transferred to a nitrocellulose membrane,

blocked with 5% BSA and probed with ab73478.

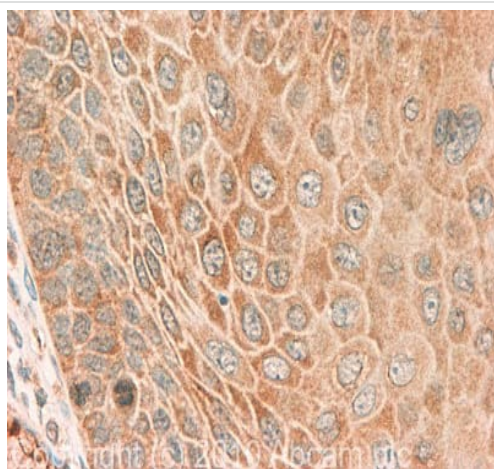
Secondary: Mouse monoclonal [SB62a] Secondary Antibody to Rabbit IgG light chain (HRP) ([ab99697](#)).

Band: 63kDa: Staufen/STAU1; non specific - 75kDa: We are unsure as to the identity of this extra band.



Immunocytochemistry/ Immunofluorescence - Anti-Staufen/STAU1 antibody (ab73478)

ICC/IF image of ab73478 stained HeLa cells. The cells were 100% methanol fixed (5 min) and then incubated in 1%BSA / 10% normal goat serum / 0.3M glycine in 0.1% PBS-Tween for 1h to permeabilise the cells and block non-specific protein-protein interactions. The cells were then incubated with the antibody (ab73478, 5µg/ml) overnight at +4°C. The secondary antibody (green) was Alexa Fluor® 488 goat anti-rabbit IgG (H+L) used at a 1/1000 dilution for 1h. Alexa Fluor® 594 WGA was used to label plasma membranes (red) at a 1/200 dilution for 1h. DAPI was used to stain the cell nuclei (blue) at a concentration of 1.43µM. This antibody also gave a positive result in 100% methanol fixed (5 min) MCF7 cells at 5µg/ml.



Immunohistochemistry (Formalin/PFA-fixed paraffin-embedded sections) - Anti-Staufen/STAU1 antibody (ab73478)

IHC image of Staufen/STAU1 staining in Human Cervical Cancer FFPE section, performed on a Bond™ system using the standard protocol F. The section was pre-treated using heat mediated antigen retrieval with sodium citrate buffer (pH6, epitope retrieval solution 1) for 20 mins. The section was then incubated with ab73478, 5µg/ml, for 15 mins at room temperature and detected using an HRP conjugated compact polymer system. DAB was used as the chromogen. The section was then counterstained with haematoxylin and mounted with DPX

**Please note:** All products are "FOR RESEARCH USE ONLY. NOT FOR USE IN DIAGNOSTIC PROCEDURES"

### Our Abpromise to you: Quality guaranteed and expert technical support

- Replacement or refund for products not performing as stated on the datasheet
- Valid for 12 months from date of delivery
- Response to your inquiry within 24 hours

- We provide support in Chinese, English, French, German, Japanese and Spanish
- Extensive multi-media technical resources to help you
- We investigate all quality concerns to ensure our products perform to the highest standards

If the product does not perform as described on this datasheet, we will offer a refund or replacement. For full details of the Abpromise, please visit <https://www.abcam.co.jp/abpromise> or contact our technical team.

#### **Terms and conditions**

---

- Guarantee only valid for products bought direct from Abcam or one of our authorized distributors