


Anti-STAU2 antibody ab101446

面格新 1

医薬用外劇物

製品の概要

製品名	Anti-STAU2 antibody
製品の詳細	Rabbit polyclonal to STAU2
由来種	Rabbit
アプリケーション	適用あり: WB
種交差性	交差種: Human 交差が予測される動物種: Mouse, Rat, Cow 
免疫原	Recombinant fragment, corresponding to a region within amino acids 263-477 of Human STAU2 isoform 2 (AAH08369).
ポジティブ・コントロール	U87-MG whole cell lysate
特記事項	<p>The Life Science industry has been in the grips of a reproducibility crisis for a number of years. Abcam is leading the way in addressing this with our range of recombinant monoclonal antibodies and knockout edited cell lines for gold-standard validation. Please check that this product meets your needs before purchasing.</p> <p>If you have any questions, special requirements or concerns, please send us an inquiry and/or contact our Support team ahead of purchase. Recommended alternatives for this product can be found below, along with publications, customer reviews and Q&As</p>

製品の特性

製品の状態	Liquid
保存方法	Shipped at 4°C. Upon delivery aliquot and store at -20°C or -80°C. Avoid repeated freeze / thaw cycles.
バッファー	<p>pH: 7.00</p> <p>Preservative: 0.01% Thimerosal (merthiolate)</p> <p>Constituents: 1.21% Tris, 0.75% Glycine, 20% Glycerol (glycerin, glycerine)</p>
精製度	Immunogen affinity purified
ポリ/モノ	ポリクローナル
アイソタイプ	IgG

アプリケーション

The Abpromise guarantee

Abpromise保証は、次のテスト済みアプリケーションにおけるab101446の使用に適用されます

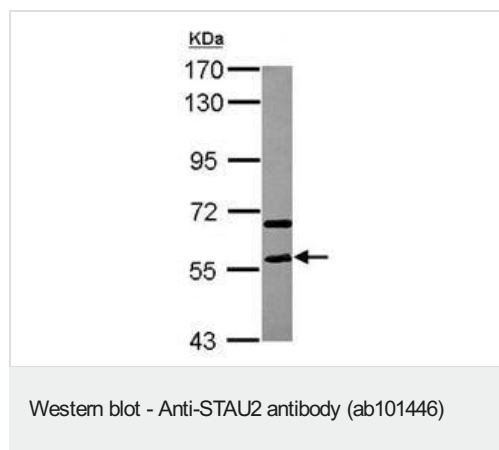
アプリケーションノートには、推奨の開始希釈率がありますが、適切な希釈率につきましてはご確認ください。

アプリケーション	Abreviews	特記事項
WB		1/500 - 1/3000. Predicted molecular weight: 59 kDa.

ターゲット情報

機能	RNA-binding protein required for the microtubule-dependent transport of neuronal RNA from the cell body to the dendrite. As protein synthesis occurs within the dendrite, the localization of specific mRNAs to dendrites may be a prerequisite for neurite outgrowth and plasticity at sites distant from the cell body.
配列類似性	Contains 4 DRBM (double-stranded RNA-binding) domains.
ドメイン	The DRBM 3 domain appears to be the major RNA-binding determinant. This domain also mediates interaction with XPO5 and is required for XPO1/CRM1-independent nuclear export.
細胞内局在	Cytoplasm. Nucleus. Nucleus > nucleolus. Endoplasmic reticulum. Shuttles between the nucleolus, nucleus and the cytoplasm. Nuclear export of isoform 1 is independent of XPO1/CRM1 and requires the exportin XPO5. Nuclear export of isoform 2 and isoform 3 can occur by both XPO1/CRM1-dependent and XPO1/CRM1-independent pathways. Found in large cytoplasmic ribonucleoprotein (RNP) granules which are present in the actin rich regions of myelinating processes and associated with microtubules, polysomes and the endoplasmic reticulum. Also recruited to stress granules (SGs) upon inhibition of translation or oxidative stress. These structures are thought to harbor housekeeping mRNAs when translation is aborted.

画像



Anti-STAU2 antibody (ab101446) at 1/2000 dilution + U87-MG whole cell lysate at 30 µg

Predicted band size: 59 kDa

7.5% SDS PAGE

Please note: All products are "FOR RESEARCH USE ONLY. NOT FOR USE IN DIAGNOSTIC PROCEDURES"

Our Abpromise to you: Quality guaranteed and expert technical support

- Replacement or refund for products not performing as stated on the datasheet

- Valid for 12 months from date of delivery
- Response to your inquiry within 24 hours
- We provide support in Chinese, English, French, German, Japanese and Spanish
- Extensive multi-media technical resources to help you
- We investigate all quality concerns to ensure our products perform to the highest standards

If the product does not perform as described on this datasheet, we will offer a refund or replacement. For full details of the Abpromise, please visit <https://www.abcam.co.jp/abpromise> or contact our technical team.

Terms and conditions

- Guarantee only valid for products bought direct from Abcam or one of our authorized distributors