

Anti-STAT6 (phospho Y641) antibody ab28829

★★★★★ [12 Abreviews](#) [34 References](#) [画像数 5](#)

製品の概要

製品名	Anti-STAT6 (phospho Y641) antibody
製品の詳細	Rabbit polyclonal to STAT6 (phospho Y641)
由来種	Rabbit
アプリケーション	適用あり: IHC-P, WB
種交差性	交差種: Human
免疫原	Synthetic peptide corresponding to Human STAT6 (phospho Y641). Synthesized phosphopeptide derived from human STAT6 around the phosphorylation site of Tyrosine 641. Database link: P42226

特記事項

The Life Science industry has been in the grips of a reproducibility crisis for a number of years. Abcam is leading the way in addressing this with our range of recombinant monoclonal antibodies and knockout edited cell lines for gold-standard validation. Please check that this product meets your needs before purchasing.

If you have any questions, special requirements or concerns, please send us an inquiry and/or contact our Support team ahead of purchase. Recommended alternatives for this product can be found below, along with publications, customer reviews and Q&As

製品の特性

製品の状態	Liquid
保存方法	Shipped at 4°C. Store at +4°C short term (1-2 weeks). Upon delivery aliquot. Store at -20°C long term.
バッファー	pH: 7.40 Preservative: 0.02% Sodium azide Constituents: 50% Glycerol (glycerin, glycerine), 0.87% Sodium chloride
精製度	Immunogen affinity purified
ポリ/モノ	ポリクローナル
アイソタイプ	IgG

アプリケーション

The Abpromise guarantee

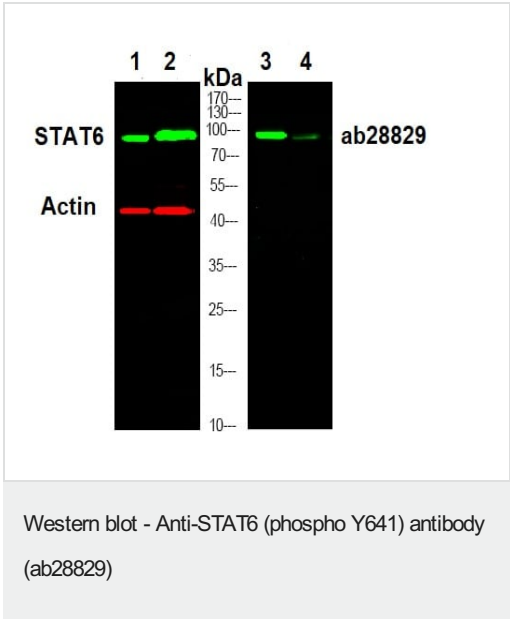
Abpromise保証は、次のテスト済みアプリケーションにおけるab28829の使用に適用されます
アプリケーションノートには、推奨の開始希釈率がありますが、適切な希釈率につきましてはご検討ください。

アプリケーション	Abreviews	特記事項
IHC-P	★★★★★ (6)	1/50 - 1/100.
WB	★★★★★ (1)	1/500 - 1/1000. Predicted molecular weight: 94 kDa.

ターゲット情報

機能	Carries out a dual function: signal transduction and activation of transcription. Involved in interleukin-4 signalling.
配列類似性	Belongs to the transcription factor STAT family. Contains 1 SH2 domain.
翻訳後修飾	Tyrosine phosphorylated following stimulation by IL-4 and IL-3.
細胞内局在	Cytoplasm. Nucleus. Translocated into the nucleus in response to phosphorylation.

画像



Lanes 1-2 : STAT6 antibody
Lanes 3-4 : Anti-STAT6 (phospho Y641) antibody (ab28829) at 1/1000 dilution

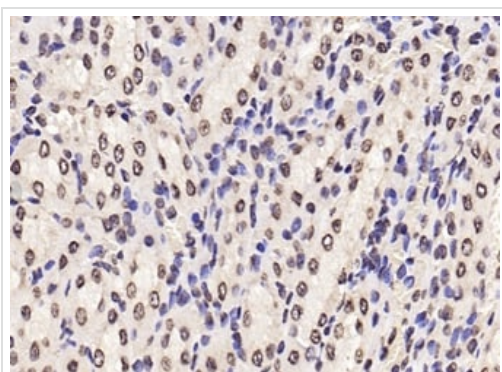
Lanes 1 & 3 : K562 cells treated with 100 ng/mL IL4
Lanes 2 & 4 : K562 untreated cells

Lysates/proteins at 20 µg per lane.

Secondary
All lanes : Dylight 800 secondary antibody at 1/10000 dilution

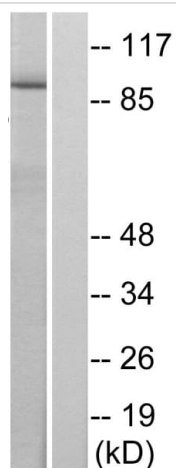
Predicted band size: 94 kDa

Loading control is Actin



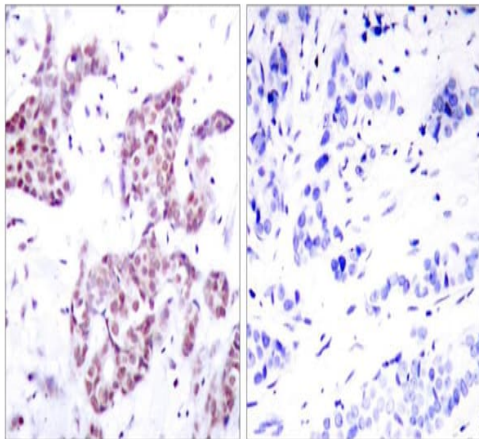
Immunohistochemistry (Formalin/PFA-fixed paraffin-embedded sections) - Anti-STAT6 (phospho Y641) antibody (ab28829)

Immunohistochemical analysis of paraffin-embedded human kidney tissue using anti-STAT6 (phospho Y641) antibody (ab28829) at 1/100 dilution.



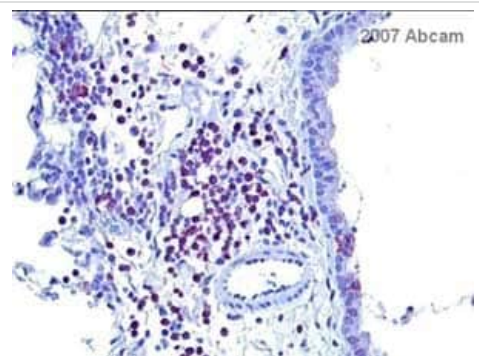
Western blot - Anti-STAT6 (phospho Y641) antibody (ab28829)

Western blot analysis of lysates from HeLa cells treated with IL-4, using STAT6 (Phospho-Tyr641) Antibody. The lane on the right is blocked with the phospho peptide.



Immunohistochemistry (Formalin/PFA-fixed paraffin-embedded sections) analysis of human breast carcinoma tissue labelling STAT6 (phospho Y641) with ab28829. Right pane - blocked with the phospho peptide.

Immunohistochemistry (Formalin/PFA-fixed paraffin-embedded sections) - Anti-STAT6 (phospho Y641) antibody (ab28829)



ab28829 at 1/100 staining mouse lung tissue sections by IHC-P. The tissue was formaldehyde fixed and blocked with serum. A heat mediated antigen retrieval step was performed prior to incubation with the antibody. Ab6720 (Goat polyclonal to Rabbit IgG H&L (biotin)) was used as the secondary antibody.

Immunohistochemistry (Formalin/PFA-fixed paraffin-embedded sections) - Anti-STAT6 (phospho Y641) antibody (ab28829)

This image is courtesy of an anonymous Abreview

Please note: All products are "FOR RESEARCH USE ONLY. NOT FOR USE IN DIAGNOSTIC PROCEDURES"

Our Abpromise to you: Quality guaranteed and expert technical support

- Replacement or refund for products not performing as stated on the datasheet
- Valid for 12 months from date of delivery
- Response to your inquiry within 24 hours
- We provide support in Chinese, English, French, German, Japanese and Spanish
- Extensive multi-media technical resources to help you
- We investigate all quality concerns to ensure our products perform to the highest standards

If the product does not perform as described on this datasheet, we will offer a refund or replacement. For full details of the Abpromise, please visit <https://www.abcam.co.jp/abpromise> or contact our technical team.

Terms and conditions

- Guarantee only valid for products bought direct from Abcam or one of our authorized distributors