

Anti-STAT5 antibody [9F7] ab230670

7 References [画像数 6](#)

製品の概要

製品名	Anti-STAT5 antibody [9F7]
製品の詳細	Mouse monoclonal [9F7] to STAT5
由来種	Mouse
アプリケーション	適用あり: WB, IHC-P, ICC/IF, Flow Cyt (Intra)
種交差性	交差種: Mouse, Rat, Dog, Human, African green monkey
免疫原	Recombinant full length protein corresponding to Human STAT5. Database link: P42229
ポジティブ・コントロール	WB: STAT5-transfected HEK-293T cell lysate; HepG2, HeLa, SVT2, COS-7, Jurkat, MDCK, PC-12 and MCF7 cell extracts. IHC-P: HUman testis tissue. ICC/IF: COS7 cells. Flow Cyt (Intra): HeLa and Jurkat cells.
特記事項	<p>The Life Science industry has been in the grips of a reproducibility crisis for a number of years. Abcam is leading the way in addressing this with our range of recombinant monoclonal antibodies and knockout edited cell lines for gold-standard validation. Please check that this product meets your needs before purchasing.</p> <p>If you have any questions, special requirements or concerns, please send us an inquiry and/or contact our Support team ahead of purchase. Recommended alternatives for this product can be found below, along with publications, customer reviews and Q&As</p>

製品の特性

製品の状態	Liquid
保存方法	Shipped at 4°C. Store at +4°C short term (1-2 weeks). Upon delivery aliquot. Store at -20°C long term. Avoid freeze / thaw cycle.
バッファー	Preservative: 0.02% Sodium azide Constituents: PBS, 1% BSA, 50% Glycerol (glycerin, glycerine)
精製度	Protein G purified
ポリ/モノ	モノクローナル
クローン名	9F7
アイソタイプ	IgG1

アプリケーション

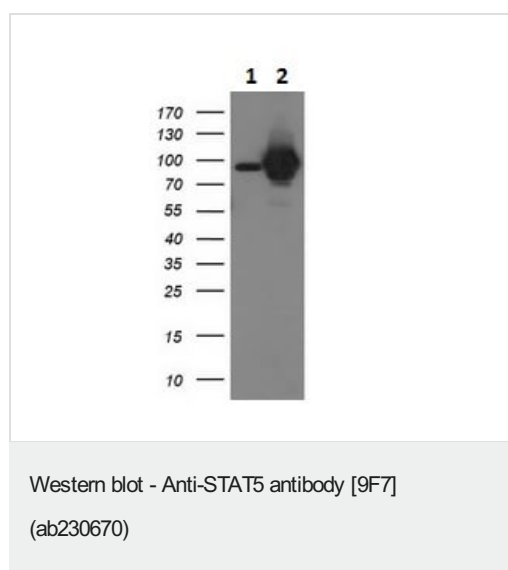
The Abpromise guarantee **Abpromise保証は、** 次のテスト済みアプリケーションにおけるab230670の使用に適用されます
アプリケーションノートには、推奨の開始希釈率がありますが、適切な希釈率につきましてはご確認ください。

アプリケーション	Abreviews	特記事項
WB		1/500 - 1/2000.
IHC-P		Use a concentration of 10 µg/ml. Perform heat mediated antigen retrieval before commencing with IHC staining protocol.
ICC/IF		1/100.
Flow Cyt (Intra)		1/100.

ターゲット情報

機能	Carries out a dual function: signal transduction and activation of transcription. Binds to the GAS element and activates PRL-induced transcription.
配列類似性	Belongs to the transcription factor STAT family. Contains 1 SH2 domain.
翻訳後修飾	Tyrosine phosphorylated in response to IL-2, IL-3, IL-7, IL-15, GM-CSF, growth hormone, prolactin, erythropoietin and thrombopoietin. Tyrosine phosphorylation is required for DNA-binding activity and dimerization. Serine phosphorylation is also required for maximal transcriptional activity.
細胞内局在	Cytoplasm. Nucleus. Translocated into the nucleus in response to phosphorylation.

画像



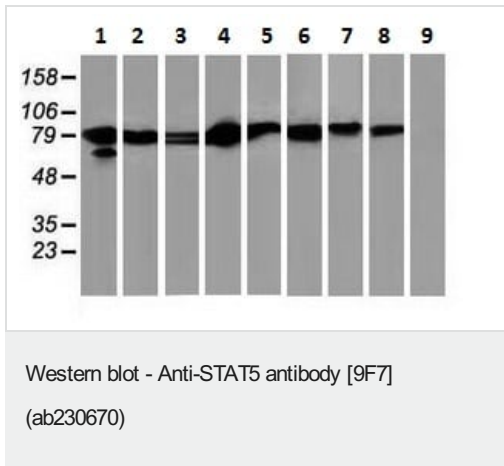
All lanes : Anti-STAT5 antibody [9F7] (ab230670) at 1/500 dilution

Lane 1 : Untransfected HEK-293T (human epithelial cell line from embryonic kidney transformed with large T antigen) cell lysate

Lane 2 : STAT5-transfected HEK-293T cell lysate

Lysates/proteins at 5 µg per lane.

Developed using the ECL technique.



All lanes : Anti-STAT5 antibody [9F7] (ab230670) at 1/500 dilution

Lane 1 : HepG2 (human liver hepatocellular carcinoma cell line) cell extract

Lane 2 : HeLa (human epithelial cell line from cervix adenocarcinoma) cell extract

Lane 3 : SVT2 cell extract

Lane 4 : A549 (human lung carcinoma cell line) cell extract

Lane 5 : COS-7 (African green monkey kidney fibroblast-like cell line) cell extract

Lane 6 : Jurkat (human T cell leukemia cell line from peripheral blood) cell extract

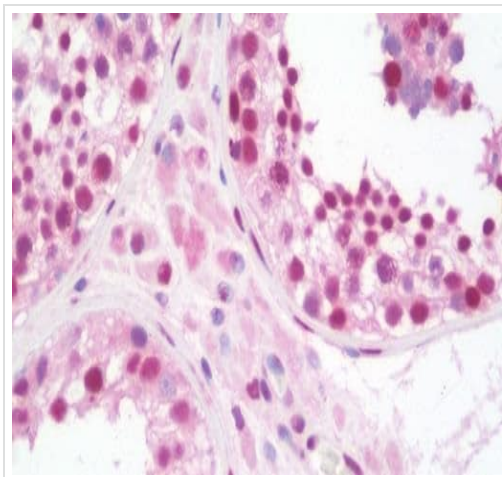
Lane 7 : MDCK (canine kidney cell line) cell extract

Lane 8 : PC-12 (rat adrenal gland pheochromocytoma cell line) cell extract

Lane 9 : MCF7 (human breast adenocarcinoma cell line) cell extract

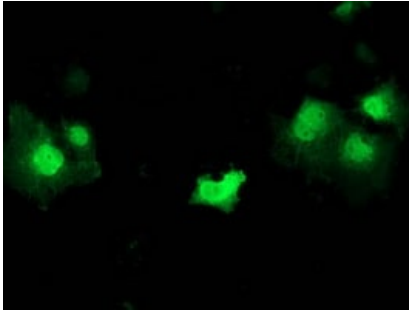
Lysates/proteins at 35 µg per lane.

Developed using the ECL technique.



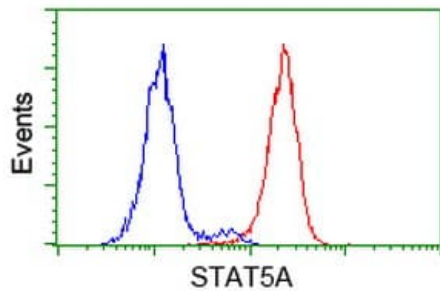
Immunohistochemistry (Formalin/PFA-fixed paraffin-embedded sections) - Anti-STAT5 antibody [9F7]
(ab230670)

Formalin-fixed, paraffin-embedded human testis tissue stained for STAT5 with ab230670 at 10 µg/ml in immunohistochemical analysis.



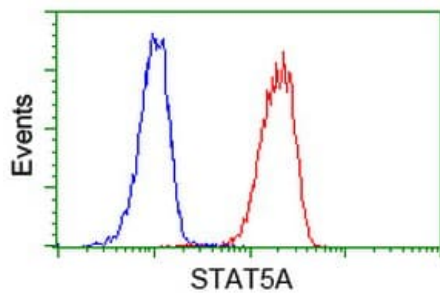
Immunocytochemistry/ Immunofluorescence - Anti-STAT5 antibody [9F7] (ab230670)

COS-7 (African green monkey kidney fibroblast-like cell line) cells transiently transfected with STAT5 and stained for STAT5 (green) using ab230670 at 1/100 dilution.



Flow Cytometry (Intracellular) - Anti-STAT5 antibody [9F7] (ab230670)

Intracellular flow cytometric analysis of HeLa (human epithelial cell line from cervix adenocarcinoma) cells labeling STAT% with ab230670 at 1/100 dilution (red) compared with a negative control (blue).



Flow Cytometry (Intracellular) - Anti-STAT5 antibody [9F7] (ab230670)

Intracellular flow cytometric analysis of Jurkat (human T cell leukemia cell line from peripheral blood) cells labeling STAT% with ab230670 at 1/100 dilution (red) compared with a negative control (blue).

Please note: All products are "FOR RESEARCH USE ONLY. NOT FOR USE IN DIAGNOSTIC PROCEDURES"

Our Abpromise to you: Quality guaranteed and expert technical support

- Replacement or refund for products not performing as stated on the datasheet

- Valid for 12 months from date of delivery
- Response to your inquiry within 24 hours
- We provide support in Chinese, English, French, German, Japanese and Spanish
- Extensive multi-media technical resources to help you
- We investigate all quality concerns to ensure our products perform to the highest standards

If the product does not perform as described on this datasheet, we will offer a refund or replacement. For full details of the Abpromise, please visit <https://www.abcam.co.jp/abpromise> or contact our technical team.

Terms and conditions

- Guarantee only valid for products bought direct from Abcam or one of our authorized distributors