

Anti-STAT4 (phospho Y693) antibody ab28815

★★★★★ [1 Abreviews](#) [10 References](#) [画像数 2](#)

製品の概要

製品名	Anti-STAT4 (phospho Y693) antibody
製品の詳細	Rabbit polyclonal to STAT4 (phospho Y693)
由来種	Rabbit
アプリケーション	適用あり: IP, WB, IHC-P, ELISA
種交差性	交差種: Mouse, Human
免疫原	Synthetic peptide corresponding to Human STAT4 (phospho Y693). Human STAT4 around the phosphorylation site of Tyr693.
特記事項	<p>The Life Science industry has been in the grips of a reproducibility crisis for a number of years. Abcam is leading the way in addressing this with our range of recombinant monoclonal antibodies and knockout edited cell lines for gold-standard validation. Please check that this product meets your needs before purchasing.</p> <p>If you have any questions, special requirements or concerns, please send us an inquiry and/or contact our Support team ahead of purchase. Recommended alternatives for this product can be found below, along with publications, customer reviews and Q&As</p>

製品の特性

製品の状態	Liquid
保存方法	Shipped at 4°C. Store at +4°C short term (1-2 weeks). Upon delivery aliquot. Store at -20°C or -80°C. Avoid freeze / thaw cycle.
バッファー	<p>pH: 7.40</p> <p>Preservative: 0.02% Sodium azide</p> <p>Constituents: PBS, 50% Glycerol, 0.87% Sodium chloride</p>
精製度	Without Mg ²⁺ and Ca ²⁺
特記事項 (精製)	Immunogen affinity purified
	The antibody was affinity-purified from rabbit antiserum by affinity-chromatography using epitope-specific phosphopeptide. The antibody against non-phosphopeptide was removed by chromatography using non-phosphopeptide corresponding to the phosphorylation site.
ポリ/モノ	ポリクローナル
アイソタイプ	IgG

アプリケーション

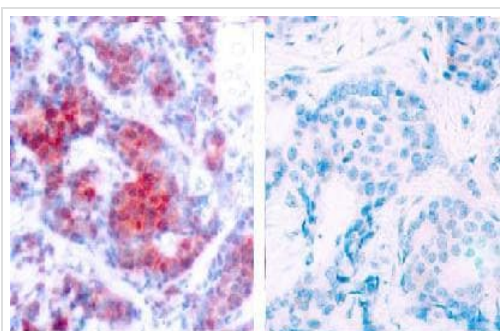
The Abpromise guarantee Abpromise保証は、次のテスト済みアプリケーションにおけるab28815の使用に適用されます
アプリケーションノートには、推奨の開始希釈率がありますが、適切な希釈率につきましてはご検討ください。

アプリケーション	Abreviews	特記事項
IP		Use at an assay dependent concentration.
WB		1/500 - 1/1000. Predicted molecular weight: 85 kDa.
IHC-P	★★★★★ (1)	1/50 - 1/100.
ELISA		Use at an assay dependent concentration.

ターゲット情報

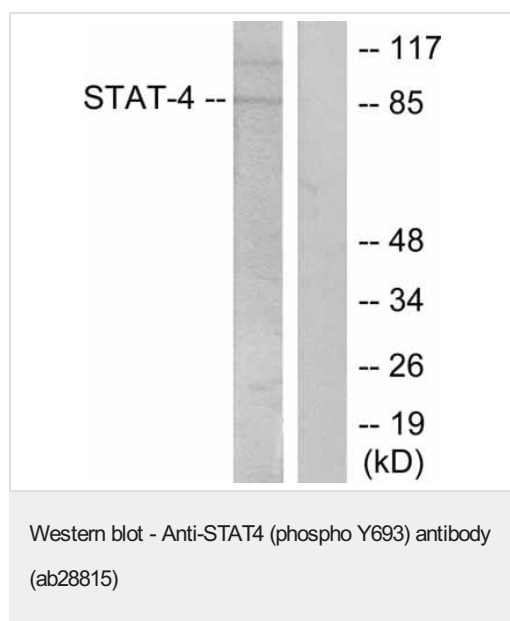
機能	Carries out a dual function: signal transduction and activation of transcription. Involved in IL12 signaling.
関連疾患	Systemic lupus erythematosus 11 Rheumatoid arthritis
配列類似性	Belongs to the transcription factor STAT family. Contains 1 SH2 domain.
翻訳後修飾	Tyrosine phosphorylated. Serine phosphorylation is also required for maximal transcriptional activity.
細胞内局在	Cytoplasm. Nucleus. Translocated into the nucleus in response to phosphorylation.

画像



ab28815, staining human STAT4 in breast carcinoma by immunohistochemistry, paraffin embedded tissue. left: Using STAT4 antibody (ab28815); right: The same antibody preincubated with synthesized phosphopeptide.

Immunohistochemistry (Formalin/PFA-fixed paraffin-embedded sections) - Anti-STAT4 (phospho Y693) antibody (ab28815)



All lanes : Anti-STAT4 (phospho Y693) antibody (ab28815)

Lane 1 : HeLa cell lysate (cells treated with IL4)

Lane 2 : HeLa cell lysate (untreated)

Predicted band size: 85 kDa

Please note: All products are "FOR RESEARCH USE ONLY. NOT FOR USE IN DIAGNOSTIC PROCEDURES"

Our Abpromise to you: Quality guaranteed and expert technical support

- Replacement or refund for products not performing as stated on the datasheet
- Valid for 12 months from date of delivery
- Response to your inquiry within 24 hours
- We provide support in Chinese, English, French, German, Japanese and Spanish
- Extensive multi-media technical resources to help you
- We investigate all quality concerns to ensure our products perform to the highest standards

If the product does not perform as described on this datasheet, we will offer a refund or replacement. For full details of the Abpromise, please visit <https://www.abcam.co.jp/abpromise> or contact our technical team.

Terms and conditions

- Guarantee only valid for products bought direct from Abcam or one of our authorized distributors