


Anti-STAT3 (phospho S727) antibody [E121-31] ab32143

リコンビナント **RabMAb**

★★★★★ **7 Abreviews** **73 References** 画像数 13

製品の概要

製品名	Anti-STAT3 (phospho S727) antibody [E121-31]
製品の詳細	Rabbit monoclonal [E121-31] to STAT3 (phospho S727)
由来種	Rabbit
アプリケーション	適用あり: ChIC/CUT&RUN-seq, ICC/IF, WB, Dot blot, IP, IHC-P
種交差性	交差種: Mouse, Rat, Human 交差が予測される動物種: Horse, Cow, Macaque monkey 
免疫原	Synthetic peptide. This information is proprietary to Abcam and/or its suppliers.
ポジティブ・コントロール	WB: A431 cell lysate, C6 treated with epidermal growth factor. IP: HeLa cells ICC/IF: A431 cells IHC-P: human astrocytoma, rat cerebral cortex, mouse liver, and brain astrocytoma tissues ChIC/CUT&RUN seq: HepG2 cell
特記事項	<p>This product is a recombinant monoclonal antibody, which offers several advantages including:</p> <ul style="list-style-type: none"> - High batch-to-batch consistency and reproducibility - Improved sensitivity and specificity - Long-term security of supply - Animal-free production <p>For more information see here.</p> <p>Our RabMAb[®] technology is a patented hybridoma-based technology for making rabbit monoclonal antibodies. For details on our patents, please refer to RabMAb[®] patents.</p> <p>Mouse: We have preliminary internal testing data to indicate this antibody may not react with this species. Please contact us for more information.</p>

製品の特性

製品の状態	Liquid
保存方法	Shipped at 4°C. Store at +4°C short term (1-2 weeks). Upon delivery aliquot. Store at -20°C. Avoid freeze / thaw cycle.
バッファー	pH: 7.20 Preservative: 0.01% Sodium azide Constituents: 59% PBS, 40% Glycerol, 0.05% BSA

精製度	Protein A purified
ポリ/モノ	モノクローナル
クローン名	E121-31
アイソタイプ	IgG

アプリケーション

The Abpromise guarantee **Abpromise保証は、次のテスト済みアプリケーションにおけるab32143の使用に適用されます**
 アプリケーションノートには、推奨の開始希釈率がありますが、適切な希釈率につきましてはご確認ください。

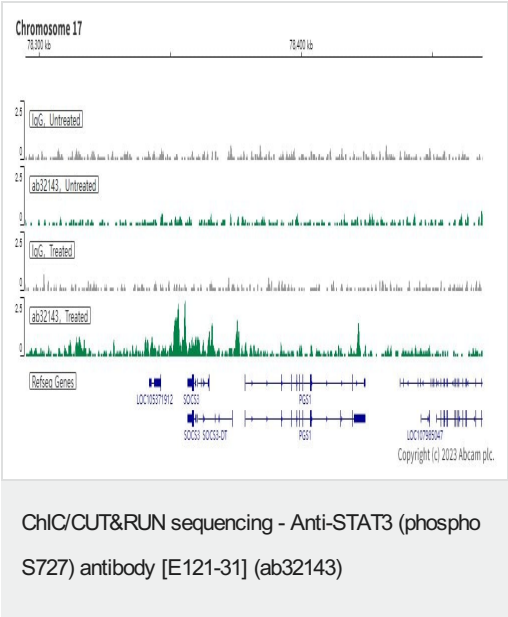
アプリケーション	Abreviews	特記事項
ChIC/CUT&RUN-seq		Use at an assay dependent concentration.
ICC/IF		1/500. For unpurified, use 1/100.
WB	★★★★★ (1)	1/1000 - 1/10000. Detects a band of approximately 98 kDa (predicted molecular weight: 88 kDa). Stimulation may be required to allow detection of the phosphorylated protein. Please see images below for recommended treatment conditions and positive controls.
Dot blot		1/1000.
IP		1/60.
IHC-P	★★★★★ (5)	1/250. Perform heat mediated antigen retrieval before commencing with IHC staining protocol. See <u>IHC antigen retrieval protocols.</u> For unpurified, use 1/50.

ターゲット情報

機能	Signal transducer and transcription activator that mediates cellular responses to interleukins, KITLG/SCF, LEP and other growth factors. Once activated, recruits coactivators, such as NCOA1 or MED1, to the promoter region of the target gene (PubMed:17344214). May mediate cellular responses to activated FGFR1, FGFR2, FGFR3 and FGFR4. Binds to the interleukin-6 (IL-6)-responsive elements identified in the promoters of various acute-phase protein genes. Activated by IL31 through IL31RA. Involved in cell cycle regulation by inducing the expression of key genes for the progression from G1 to S phase, such as CCND1 (PubMed:17344214). Mediates the effects of LEP on melanocortin production, body energy homeostasis and lactation (By similarity). May play an apoptotic role by transactivating BIRC5 expression under LEP activation (PubMed:18242580). Cytoplasmic STAT3 represses macroautophagy by inhibiting EIF2AK2/PKR activity.
組織特異性	Heart, brain, placenta, lung, liver, skeletal muscle, kidney and pancreas.
関連疾患	Hyperimmunoglobulin E recurrent infection syndrome, autosomal dominant Autoimmune disease, multisystem, infantile-onset

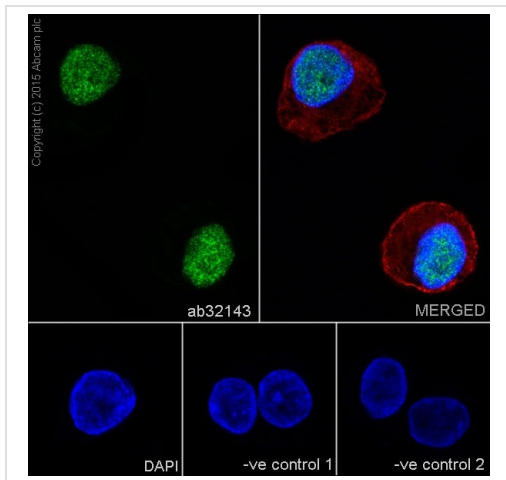
配列類似性	<p>Belongs to the transcription factor STAT family.</p> <p>Contains 1 SH2 domain.</p>
翻訳後修飾	<p>Tyrosine phosphorylated upon stimulation with EGF. Tyrosine phosphorylated in response to constitutively activated FGFR1, FGFR2, FGFR3 and FGFR4 (By similarity). Activated through tyrosine phosphorylation by BMX. Tyrosine phosphorylated in response to IL6, IL11, LIF, CNTF, KITLG/SCF, CSF1, EGF, PDGF, IFN-alpha, LEP and OSM. Activated KIT promotes phosphorylation on tyrosine residues and subsequent translocation to the nucleus.</p> <p>Phosphorylated on serine upon DNA damage, probably by ATM or ATR. Serine phosphorylation is important for the formation of stable DNA-binding STAT3 homodimers and maximal transcriptional activity. ARL2BP may participate in keeping the phosphorylated state of STAT3 within the nucleus. Upon LPS challenge, phosphorylated within the nucleus by IRAK1. Upon erythropoietin treatment, phosphorylated on Ser-727 by RPS6KA5. Phosphorylation at Tyr-705 by PTK6 or FER leads to an increase of its transcriptional activity. Dephosphorylation on tyrosine residues by PTPN2 negatively regulates IL6/interleukin-6 signaling.</p>
細胞内局在	<p>Cytoplasm. Nucleus. Shuttles between the nucleus and the cytoplasm. Translocated into the nucleus upon tyrosine phosphorylation and dimerization, in response to signaling by activated FGFR1, FGFR2, FGFR3 or FGFR4. Constitutive nuclear presence is independent of tyrosine phosphorylation. Predominantly present in the cytoplasm without stimuli. Upon leukemia inhibitory factor (LIF) stimulation, accumulates in the nucleus. The complex composed of BART and ARL2 plays an important role in the nuclear translocation and retention of STAT3. Identified in a complex with LYN and PAG1.</p>

画像



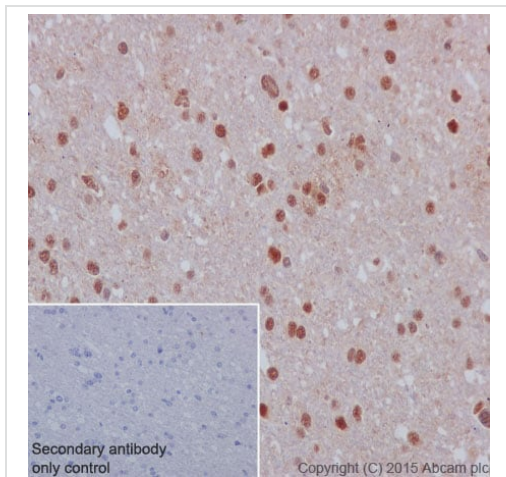
ChIC/CUT&RUN was performed using a pAG-MNase at a final concentration of 700 ng/ μ L, 2.5×10^5 HepG2 cells (starved overnight and treated with 100ng/ml IL-6 for 30min) and 5 μ g of ab32143 [E121-31]. The resulting DNA was sequenced on the Illumina NovaSeq 6000 to a depth of 10 million reads. The negative IgG control **ab172730** is also shown.

Additional screenshots of mapped reads can be downloaded [here](#). The University of Geneva owns patents relevant to ChIC (Chromatin Immuno-Cleavage) methods.



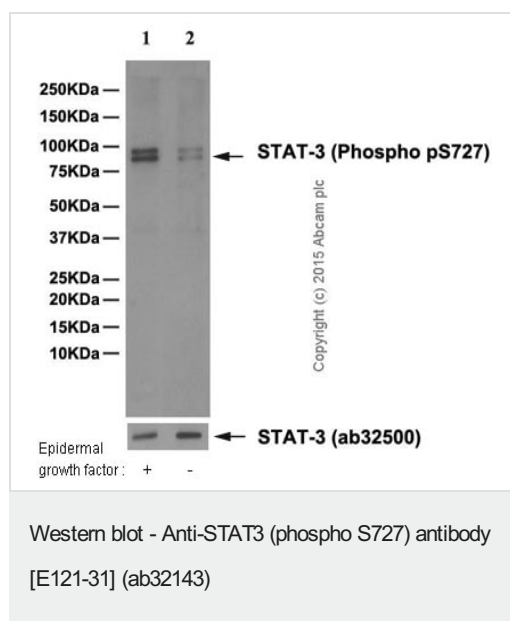
Immunocytochemistry/ Immunofluorescence - Anti-STAT3 (phospho S727) antibody [E121-31] (ab32143)

Purified ab32143 staining STAT3 (phospho S727) in A431 cells by Immunocytochemistry/ Immunofluorescence. 4% PFA-fixed, 0.1% Triton X-100 permeabilized A431 (Human epidermoid carcinoma) cells labelled with ab32143 at 1/500 dilution, followed by Goat anti-rabbit IgG (Alexa Fluor 488) ([ab150077](#)) secondary antibody at 1/400 dilution (green). Confocal image showing nuclear staining on A431 cell line. The red staining is [ab7291](#) anti-Tubulin (mouse mAb), followed by Goat Anti-Mouse IgG H&L (Alexa Fluor® 594) ([ab150120](#)) secondary antibody.



Immunohistochemistry (Formalin/PFA-fixed paraffin-embedded sections) - Anti-STAT3 (phospho S727) antibody [E121-31] (ab32143)

Immunohistochemical staining of paraffin embedded human astrocytoma with purified ab32143 at a working dilution of 1/250. The secondary antibody used is HRP goat anti-rabbit IgG H&L ([ab97051](#)) at 1/500. The sample is counter-stained with hematoxylin. Antigen retrieval was performed using Tris-EDTA buffer, pH 9.0. PBS was used instead of the primary antibody as the negative control, and is shown in the inset.



All lanes : Anti-STAT3 (phospho S727) antibody [E121-31] (ab32143) at 1/5000 dilution (purified)

Lane 1 : C6 treated with epidermal growth factor

Lane 2 : untreated C6 whole cell lysates

Lysates/proteins at 20 µg per lane.

Secondary

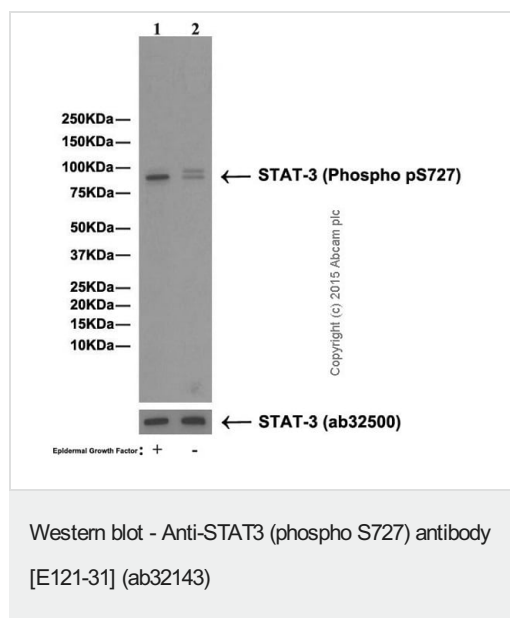
All lanes : HRP goat anti-rabbit IgG (H+L) at 1/50000 dilution

Predicted band size: 88 kDa

Observed band size: 98 kDa

Blocking buffer: 5% NFDM/TBST

Dilution buffer: 5% NFDM/TBST



All lanes : purified

Lane 1 : A431 treated with epidermal growth factor

Lane 2 : untreated A431 cell lysate

Lysates/proteins at 20 µg per lane.

Secondary

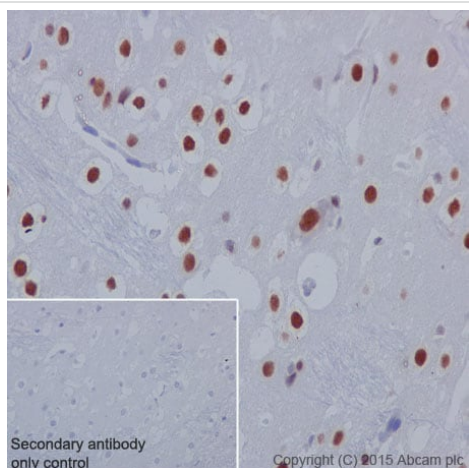
All lanes : HRP goat anti-rabbit IgG (H+L) at 1/50000 dilution

Predicted band size: 88 kDa

Observed band size: 98 kDa

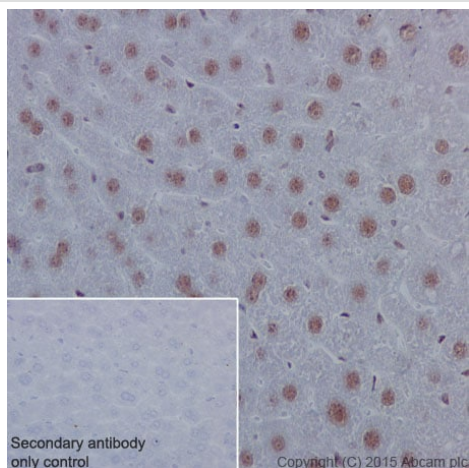
Blocking buffer: 5% NFDM/TBST

Dilution buffer: 5% NFDM/TBST



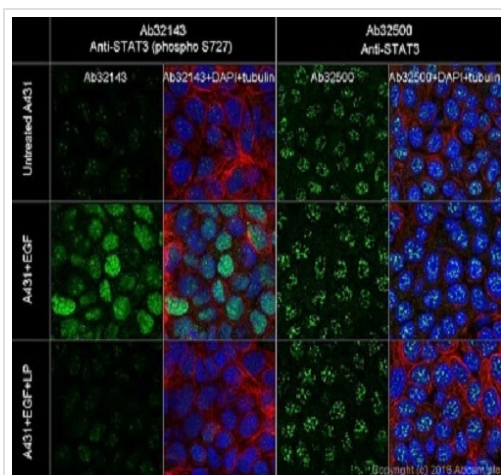
Immunohistochemistry (Formalin/PFA-fixed paraffin-embedded sections) - Anti-STAT3 (phospho S727) antibody [E121-31] (ab32143)

Immunohistochemical staining of paraffin embedded rat cerebral cortex with purified ab32143 at a working dilution of 1/250. The secondary antibody used is HRP goat anti-rabbit IgG H&L ([ab97051](#)) at 1/500. The sample is counter-stained with hematoxylin. Antigen retrieval was performed using Tris-EDTA buffer, pH 9.0. PBS was used instead of the primary antibody as the negative control, and is shown in the inset.



Immunohistochemistry (Formalin/PFA-fixed paraffin-embedded sections) - Anti-STAT3 (phospho S727) antibody [E121-31] (ab32143)

Immunohistochemical staining of paraffin embedded mouse liver with purified ab32143 at a working dilution of 1/250. The secondary antibody used is HRP goat anti-rabbit IgG H&L ([ab97051](#)) at 1/500. The sample is counter-stained with hematoxylin. Antigen retrieval was performed using Tris-EDTA buffer, pH 9.0. PBS was used instead of the primary antibody as the negative control, and is shown in the inset.

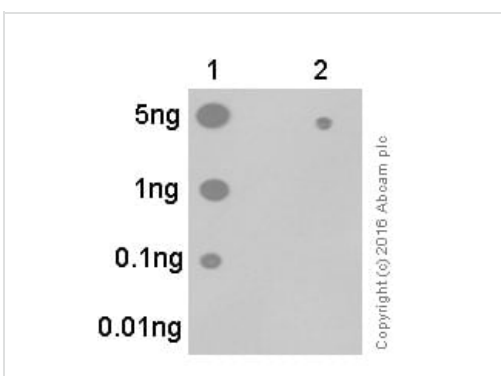


Immunocytochemistry/ Immunofluorescence - Anti-STAT3 (phospho S727) antibody [E121-31] (ab32143)

Immunocytochemical/Immunofluorescence analysis of untreated, EGF treated and EGF + LP treated A431 cells labelling STAT3 (phospho S727) with ab32143 (left) and STAT3 with **ab32500** (right) both at a dilution of 1/500.

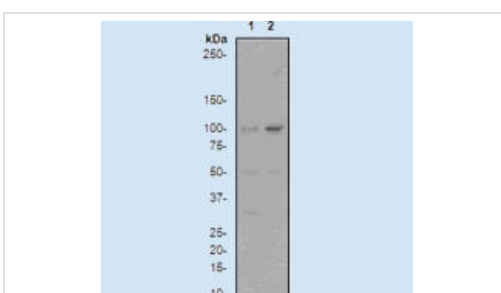
Cells were fixed with 4% paraformaldehyde and permeabilized with 0.1% Triton X-100. Goat Anti-Rabbit IgG H&L (Alexa Fluor® 488) (**ab150077**) (1/1000) was used as the secondary antibody (green). DAPI (blue) was used as the nuclear counterstain. Anti-alpha Tubulin antibody [DM1A] - Microtubule Marker (Alexa Fluor® 594) (**ab195889**) (1/200) was used as a counterstain (red).

The green staining was increased and translocated from the cytoplasm into the nucleus in the EGF (**ab9697** 100ng/ml, 10min) treated A431 cells when compared with A431 cells without treatment. After LP treatment, the green signal was decreased. For the pan antibody, there was no great difference after EGF (100ng/ml, 10min) or EGF (100ng/ml, 10min) + LP treatment.



Dot Blot - Anti-STAT3 (phospho S727) antibody [E121-31] (ab32143)

Dot Blot analysis of Lane 1: STAT3 (pS727) phospho peptide and Lane 2: STAT3 non-phospho peptide labeling STAT3 (phospho S727) with ab32143 at 1/1000 dilution (0.009 µg/ml). 5% NFDM /TBST was used as the diluting and blocking buffer and concentration. **ab97051**, Goat Anti-Rabbit IgG, (H+L), Peroxidase conjugated was used as the secondary antibody at 1/100,000 dilution. Exposure time: 10 seconds.



Western blot - Anti-STAT3 (phospho S727) antibody [E121-31] (ab32143)

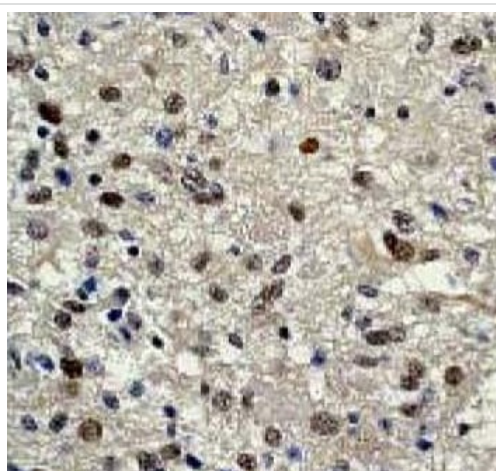
All lanes : Anti-STAT3 (phospho S727) antibody [E121-31] (ab32143) at 1/1000 dilution (unpurified)

Lane 1 : A431 cell lysate

Lane 2 : A431 + EGF cell lysate

Predicted band size: 88 kDa

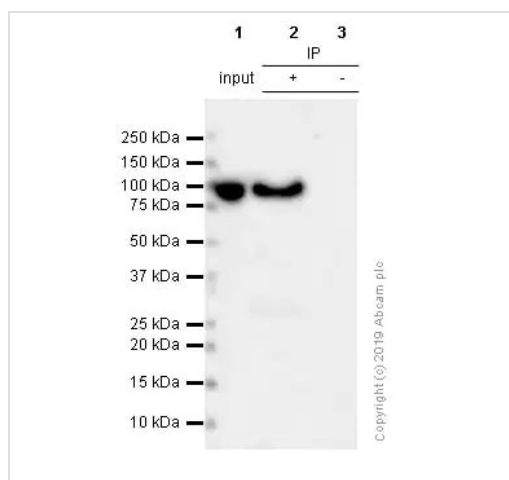
Observed band size: 98 kDa



Immunohistochemistry (Formalin/PFA-fixed paraffin-embedded sections) - Anti-STAT3 (phospho S727) antibody [E121-31] (ab32143)

IHC-P analysis of brain astrocytoma using unpurified ab32143 at 1/50 dilution.

Perform heat mediated antigen retrieval before commencing with IHC staining protocol.



Immunoprecipitation - Anti-STAT3 (phospho S727) antibody [E121-31] (ab32143)

ab32143 (purified) at 1/60 dilution (2.594 µg/ml)
immunoprecipitating STAT3 in HeLa whole cell lysate.

Lane 1 (input): HeLa (human cervix adenocarcinoma epithelial cell) whole cell lysate 10µg

Lane 2 (+): ab32143 & HeLa whole cell lysate

Lane 3 (-): Rabbit monoclonal IgG (**ab172730**) instead of ab32143 in HeLa whole cell lysate

For western blotting, ab32143 at 1/500 and VeriBlot for IP secondary antibody (HRP) (**ab131366**) was used at 1/1000 dilution.

Blocking and diluting buffer: 5% NFDM /TBST.

Why choose a recombinant antibody?



Research with confidence
Consistent and reproducible results



Long-term and scalable supply
Recombinant technology



Success from the first experiment
Confirmed specificity



Ethical standards compliant
Animal-free production

Anti-STAT3 (phospho S727) antibody [E121-31]
(ab32143)

Please note: All products are "FOR RESEARCH USE ONLY. NOT FOR USE IN DIAGNOSTIC PROCEDURES"

Our Abpromise to you: Quality guaranteed and expert technical support

- Replacement or refund for products not performing as stated on the datasheet
- Valid for 12 months from date of delivery
- Response to your inquiry within 24 hours
- We provide support in Chinese, English, French, German, Japanese and Spanish
- Extensive multi-media technical resources to help you
- We investigate all quality concerns to ensure our products perform to the highest standards

If the product does not perform as described on this datasheet, we will offer a refund or replacement. For full details of the Abpromise, please visit <https://www.abcam.co.jp/abpromise> or contact our technical team.

Terms and conditions

- Guarantee only valid for products bought direct from Abcam or one of our authorized distributors