

# Anti-STAT3 (phospho S727) antibody ab30647

★★★★★ [3 Abreviews](#) [66 References](#) [画像数 5](#)

### 製品の概要

---

|          |   |
|----------|---|
| 製品名      | Anti-STAT3 (phospho S727) antibody  |
| 製品の詳細    | Rabbit polyclonal to STAT3 (phospho S727)   |
| 由来種      | Rabbit  |
| アプリケーション | <b>適用あり:</b> IP, ELISA, IHC-P, IHC-FoFr, WB   |
| 種交差性     | <b>交差種:</b> Mouse, Rat, Dog, Human, African green monkey  |
| 免疫原      | Synthetic peptide corresponding to Human STAT3 (phospho S727). The antiserum was produced against synthesized phosphopeptide derived from human STAT3 around the phosphorylation site of serine 727 (P-M-SP-P-R).<br>Database link: <a href="#">P40763</a><br>(Peptide available as <a href="#">ab43618</a> , <a href="#">ab82053</a> ) |

### 特記事項

The Life Science industry has been in the grips of a reproducibility crisis for a number of years. Abcam is leading the way in addressing this with our range of recombinant monoclonal antibodies and knockout edited cell lines for gold-standard validation. Please check that this product meets your needs before purchasing.

If you have any questions, special requirements or concerns, please send us an inquiry and/or contact our Support team ahead of purchase. Recommended alternatives for this product can be found below, along with publications, customer reviews and Q&As

### 製品の特性

---

|           |   |
|-----------|---|
| 製品の状態     | Liquid  |
| 保存方法      | Shipped at 4°C. Store at +4°C short term (1-2 weeks). Upon delivery aliquot. Store at -20°C. Avoid freeze / thaw cycle.   |
| バッファー     | pH: 7.40<br>Preservative: 0.02% Sodium azide<br>Constituents: 49% PBS, 50% Glycerol, 0.87% Sodium chloride<br><br>PBS without Mg <sup>2+</sup> and Ca <sup>2+</sup>   |
| 精製度       | Protein A purified  |
| 特記事項 (精製) | ab30647 was affinity-purified from rabbit antiserum by affinity-chromatography using epitope-specific phosphopeptide. The antibody against non-phosphopeptide was removed by chromatography using non-phosphopeptide corresponding to the phosphorylation site. |

ポリモノ  
アイソタイプ

ポリクローナル  
IgG

## アプリケーション

**The Abpromise guarantee** Abpromise保証は、次のテスト済みアプリケーションにおけるab30647の使用に適用されず  
アプリケーションノートには、推奨の開始希釈率がありますが、適切な希釈率につきましてはご検討ください。

| アプリケーション | Abreviews | 特記事項  |
|----------|-----------|---|
| IP       |           | Use at an assay dependent concentration.  |
| ELISA    |           | Use at an assay dependent concentration.  |
| IHC-P    |           | 1/50 - 1/100. Perform heat mediated antigen retrieval via the pressure cooker method before commencing with IHC staining protocol.                                  |
| IHC-FoFr | ★★★★★ (1) | Use at an assay dependent concentration. PubMed: 20950279   |
| WB       | ★★★★★ (1) | 1/500 - 1/1000. Detects a band of approximately 88 kDa (predicted molecular weight: 88 kDa). Can be blocked with <b>Recombinant Human STAT3 protein (ab43618)</b> . |

## ターゲット情報

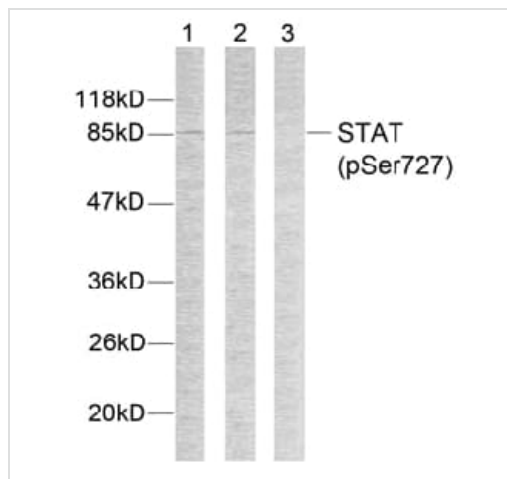
|              |  |
|--------------|--|
| <b>機能</b>    | Signal transducer and transcription activator that mediates cellular responses to interleukins, KITLG/SCF, LEP and other growth factors. Once activated, recruits coactivators, such as NCOA1 or MED1, to the promoter region of the target gene (PubMed:17344214). May mediate cellular responses to activated FGFR1, FGFR2, FGFR3 and FGFR4. Binds to the interleukin-6 (IL-6)-responsive elements identified in the promoters of various acute-phase protein genes. Activated by IL31 through IL31RA. Involved in cell cycle regulation by inducing the expression of key genes for the progression from G1 to S phase, such as CCND1 (PubMed:17344214). Mediates the effects of LEP on melanocortin production, body energy homeostasis and lactation (By similarity). May play an apoptotic role by transactivating BIRC5 expression under LEP activation (PubMed:18242580). Cytoplasmic STAT3 represses macroautophagy by inhibiting EIF2AK2/PKR activity. |
| <b>組織特異性</b> | Heart, brain, placenta, lung, liver, skeletal muscle, kidney and pancreas.   |
| <b>関連疾患</b>  | Hyperimmunoglobulin E recurrent infection syndrome, autosomal dominant Autoimmune disease, multisystem, infantile-onset  |
| <b>配列類似性</b> | Belongs to the transcription factor STAT family.<br>Contains 1 SH2 domain.   |
| <b>翻訳後修飾</b> | Tyrosine phosphorylated upon stimulation with EGF. Tyrosine phosphorylated in response to constitutively activated FGFR1, FGFR2, FGFR3 and FGFR4 (By similarity). Activated through tyrosine phosphorylation by BMX. Tyrosine phosphorylated in response to IL6, IL11, LIF, CNTF, KITLG/SCF, CSF1, EGF, PDGF, IFN-alpha, LEP and OSM. Activated KIT promotes phosphorylation on tyrosine residues and subsequent translocation to the nucleus. Phosphorylated on serine upon DNA damage, probably by ATM or ATR. Serine phosphorylation  |

is important for the formation of stable DNA-binding STAT3 homodimers and maximal transcriptional activity. ARL2BP may participate in keeping the phosphorylated state of STAT3 within the nucleus. Upon LPS challenge, phosphorylated within the nucleus by IRAK1. Upon erythropoietin treatment, phosphorylated on Ser-727 by RPS6KA5. Phosphorylation at Tyr-705 by PTK6 or FER leads to an increase of its transcriptional activity. Dephosphorylation on tyrosine residues by PTPN2 negatively regulates IL6/interleukin-6 signaling.

#### 細胞内局在

Cytoplasm. Nucleus. Shuttles between the nucleus and the cytoplasm. Translocated into the nucleus upon tyrosine phosphorylation and dimerization, in response to signaling by activated FGFR1, FGFR2, FGFR3 or FGFR4. Constitutive nuclear presence is independent of tyrosine phosphorylation. Predominantly present in the cytoplasm without stimuli. Upon leukemia inhibitory factor (LIF) stimulation, accumulates in the nucleus. The complex composed of BART and ARL2 plays an important role in the nuclear translocation and retention of STAT3. Identified in a complex with LYN and PAG1.

#### 画像



Western blot - Anti-STAT3 (phospho S727) antibody (ab30647)

**All lanes :** Anti-STAT3 (phospho S727) antibody (ab30647)

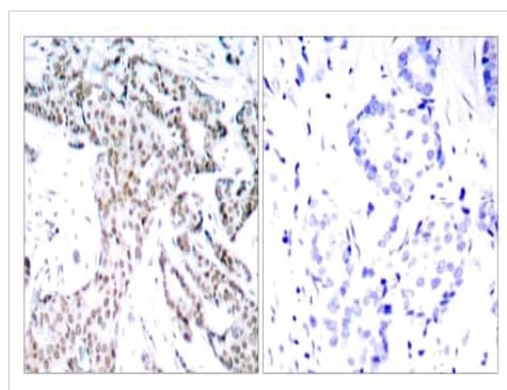
**Lane 1 :** HeLa cells extract

**Lane 2 :** HeLa cells extract with Synthesized non-phosphopeptide

**Lane 3 :** HeLa cells extract with Synthesized phosphopeptide

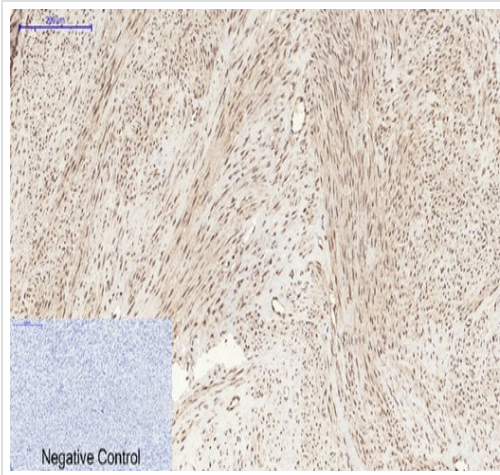
**Predicted band size:** 88 kDa

**Observed band size:** 88 kDa



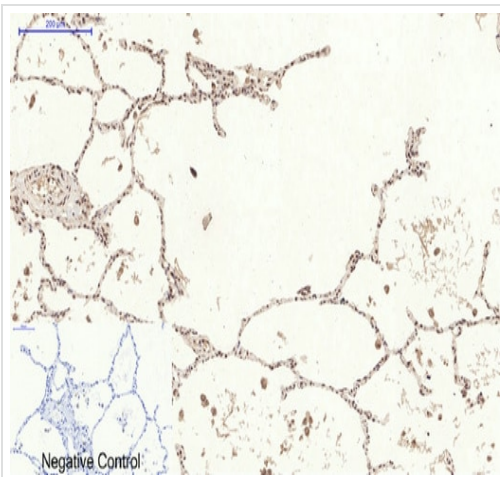
Immunohistochemistry (Formalin/PFA-fixed paraffin-embedded sections) - Anti-STAT3 (phospho S727) antibody (ab30647)

**ab30647** at 1/50 dilution staining STAT3 (phospho S727) in human breast carcinoma tissue by Immunohistochemistry (Formalin/PFA fixed paraffin embedded sections). The left image show staining by **ab30647** without specific peptide while right image show staining after blocking with peptide.



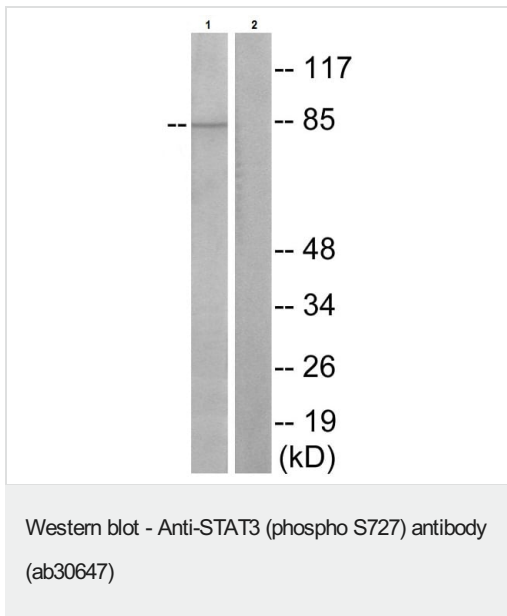
Immunohistochemical analysis of human uterus tissue stained with ab30647 at 1/200 dilution at 4°C overnight. The negative control is stained with secondary antibody only.

Immunohistochemistry (Formalin/PFA-fixed paraffin-embedded sections) - Anti-STAT3 (phospho S727) antibody (ab30647)



Immunohistochemical analysis of human lung tissue stained with ab30647 at 1/200 dilution at 4°C overnight. The negative control is stained with secondary antibody only.

Immunohistochemistry (Formalin/PFA-fixed paraffin-embedded sections) - Anti-STAT3 (phospho S727) antibody (ab30647)



**All lanes :** Anti-STAT3 (phospho S727) antibody (ab30647) at 1/500 dilution

**Lane 1 :** COS7 cell lysate

**Lane 2 :** COS7 cell lysate with phospho peptide

**Predicted band size:** 88 kDa

**Please note:** All products are "FOR RESEARCH USE ONLY. NOT FOR USE IN DIAGNOSTIC PROCEDURES"

### Our Abpromise to you: Quality guaranteed and expert technical support

- Replacement or refund for products not performing as stated on the datasheet
- Valid for 12 months from date of delivery
- Response to your inquiry within 24 hours
- We provide support in Chinese, English, French, German, Japanese and Spanish
- Extensive multi-media technical resources to help you
- We investigate all quality concerns to ensure our products perform to the highest standards

If the product does not perform as described on this datasheet, we will offer a refund or replacement. For full details of the Abpromise, please visit <https://www.abcam.co.jp/abpromise> or contact our technical team.

### Terms and conditions

- Guarantee only valid for products bought direct from Abcam or one of our authorized distributors