

Anti-STAT2 antibody ab124283

2 References [画像数 1](#)

製品の概要

製品名	Anti-STAT2 antibody
製品の詳細	Rabbit polyclonal to STAT2
由来種	Rabbit
アプリケーション	適用あり: IP
種交差性	交差種: Human 交差が予測される動物種: Chimpanzee, Gorilla, Orangutan 
免疫原	Synthetic peptide corresponding to Human STAT2 aa 150-250. Database link: P52630
ポジティブ・コントロール	IP: Jurkat whole cell lysate.
特記事項	<p>The Life Science industry has been in the grips of a reproducibility crisis for a number of years. Abcam is leading the way in addressing this with our range of recombinant monoclonal antibodies and knockout edited cell lines for gold-standard validation. Please check that this product meets your needs before purchasing.</p> <p>If you have any questions, special requirements or concerns, please send us an inquiry and/or contact our Support team ahead of purchase. Recommended alternatives for this product can be found below, along with publications, customer reviews and Q&As</p>

製品の特性

製品の状態	Liquid
保存方法	Shipped at 4°C. Upon delivery aliquot and store at -20°C. Avoid freeze / thaw cycles.
バッファー	pH: 7 Preservative: 0.09% Sodium azide Constituent: 99% Tris citrate/phosphate
精製度	pH 7 to 8 Immunogen affinity purified
特記事項(精製)	ab124283 was affinity purified using an epitope specific to STAT2 immobilized on solid support.
ポリ/モノ	ポリクローナル
アイソタイプ	IgG

アプリケーション

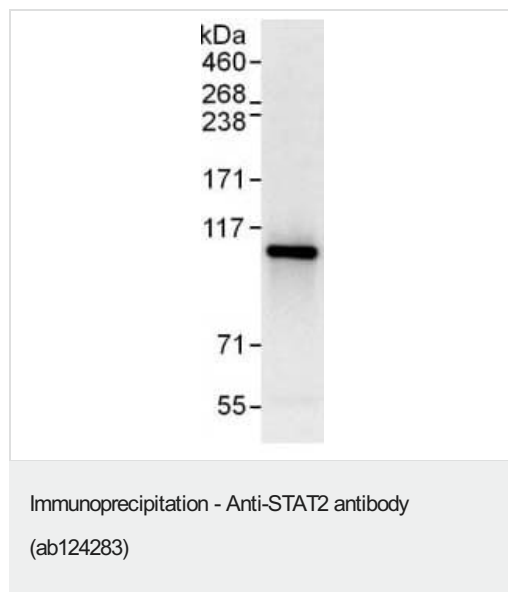
The Abpromise guarantee Abpromise保証は、 次のテスト済みアプリケーションにおけるab124283の使用に適用されます
アプリケーションノートには、推奨の開始希釈率がありますが、適切な希釈率につきましてはご検討ください。

アプリケーション	Abreviews	特記事項
IP		Use at 2-10 µg/mg of lysate.

ターゲット情報

機能	Signal transducer and activator of transcription that mediates signaling by type I IFNs (IFN-alpha and IFN-beta). Following type I IFN binding to cell surface receptors, Jak kinases (TYK2 and JAK1) are activated, leading to tyrosine phosphorylation of STAT1 and STAT2. The phosphorylated STATs dimerize, associate with ISGF3G/IRF-9 to form a complex termed ISGF3 transcription factor, that enters the nucleus. ISGF3 binds to the IFN stimulated response element (ISRE) to activate the transcription of interferon stimulated genes, which drive the cell in an antiviral state.
配列類似性	Belongs to the transcription factor STAT family. Contains 1 SH2 domain.
翻訳後修飾	Tyrosine phosphorylated in response to IFN-alpha.
細胞内局在	Cytoplasm. Nucleus. Translocated into the nucleus upon activation by IFN-alpha/beta.

画像



Detection of STAT2 by Western Blot of Immunoprecipitate.
anti-STAT2 antibody at 1µg/ml staining STAT2 in Jurkat whole cell
lysate immunoprecipitated using **ab123283** at 6µg/mg lysate (1
mg/IP; 20% of IP loaded/lane).
Detection: Chemiluminescence with exposure time of 3 seconds.

Please note: All products are "FOR RESEARCH USE ONLY. NOT FOR USE IN DIAGNOSTIC PROCEDURES"

Our Abpromise to you: Quality guaranteed and expert technical support

- Replacement or refund for products not performing as stated on the datasheet

- Valid for 12 months from date of delivery
- Response to your inquiry within 24 hours
- We provide support in Chinese, English, French, German, Japanese and Spanish
- Extensive multi-media technical resources to help you
- We investigate all quality concerns to ensure our products perform to the highest standards

If the product does not perform as described on this datasheet, we will offer a refund or replacement. For full details of the Abpromise, please visit <https://www.abcam.co.jp/abpromise> or contact our technical team.

Terms and conditions

- Guarantee only valid for products bought direct from Abcam or one of our authorized distributors