

# Anti-Staphylococcus aureus antibody ab20920

★★★★★ [8 Abreviews](#) [42 References](#) [画像数 2](#)

### 製品の概要

製品名	Anti-Staphylococcus aureus antibody
製品の詳細	Rabbit polyclonal to Staphylococcus aureus
由来種	Rabbit
特異性	Soluble and structural antigens of the whole bacterium. Antiserum is not absorbed for related microorganisms.
アプリケーション	<b>適用あり:</b> ICC/IF, IHC-Fr
種交差性	<b>交差種:</b> Staphylococcus aureus
免疫原	Tissue, cells or virus corresponding to Staphylococcus aureus. Staphylococcus aureus strain ATCC 27660 (mixture of intact organisms and lysed cells).
特記事項	<p>The Life Science industry has been in the grips of a reproducibility crisis for a number of years. Abcam is leading the way in addressing this with our range of recombinant monoclonal antibodies and knockout edited cell lines for gold-standard validation. Please check that this product meets your needs before purchasing.</p> <p>If you have any questions, special requirements or concerns, please send us an inquiry and/or contact our Support team ahead of purchase. Recommended alternatives for this product can be found below, along with publications, customer reviews and Q&amp;As</p>

### 製品の特性

製品の状態	Liquid
保存方法	Shipped at 4°C. Store at +4°C short term (1-2 weeks). Upon delivery aliquot. Store at -20°C or -80°C. Avoid freeze / thaw cycle.
バッファー	Preservative: 0.1% Sodium azide Constituent: 0.0268% PBS
精製度	Protein A purified
ポリ/モノ	ポリクローナル
アイソタイプ	IgG

### アプリケーション

## The Abpromise guarantee

**Abpromise保証は、次のテスト済みアプリケーションにおけるab20920の使用に適用されます**

アプリケーションノートには、推奨の開始希釈率がありますが、適切な希釈率につきましてはご検討ください。

アプリケーション	Abreviews	特記事項
ICC/IF	★★★★★ (2)	Use at an assay dependent concentration.
IHC-Fr	★★★★★ (3)	Use at an assay dependent concentration. Use with acetone fixed tissues.

## ターゲット情報

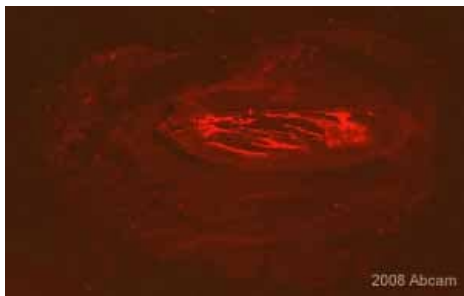
### 関連性

S.aureus binds IgG molecules by their Fc region. In serum, the bacteria will bind IgG molecules in the wrong orientation on their surface, which hinders opsonization and phagocytosis. Mutants of S. aureus lacking protein A are more efficiently phagocytosed in vitro, and mutants in infection models have diminished virulence. Due to its affinity for the Fc region of many mammalian immunoglobulins, protein A is considered a universal reagent in biochemistry and immunology.

### 細胞内局在

Secreted; cell wall.

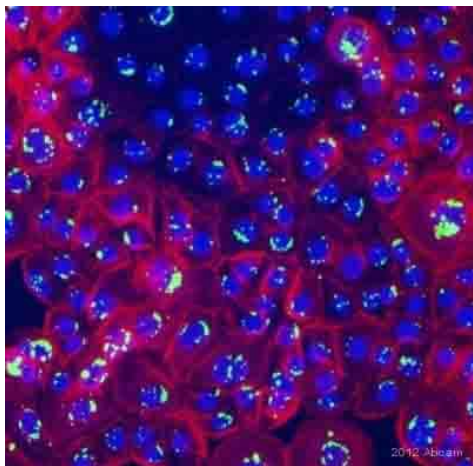
## 画像



Immunohistochemistry (Frozen sections) - Anti-Staphylococcus aureus antibody (ab20920)

This image is courtesy of an Abreview submitted by Dr Dagmar Salber

ab20920 staining an abscess in rat calf tissue prepared as a 20 µm cryoslice. Tissue was fixed in paraformaldehyde, permeabilised with 0,5% Triton X100 in PBS, and blocked with 10% serum plus 1% BSA for 1 hour at room temperature. The primary antibody was diluted 1/500 with PBS plus 3-5% Serum, 0,5% Triton X100 and incubated for 24 hours at 20°C. An Alexa Fluor® 568 goat anti-rabbit was used as the secondary



Immunocytochemistry/ Immunofluorescence - Anti-Staphylococcus aureus antibody (ab20920)  
Image courtesy of an anonymous Abreview.

ab20920 staining Staphylococcus aureus in human keratinocytes by Immunocytochemistry/ Immunofluorescence.

Cells were fixed in methanol, permeabilized using 0.1% saponin/ PBS, blocked with 4% BSA for 30 minutes at 25°C and then incubated with ab20920 at 10µg/ml for 14 hours at 4°C. The secondary used was an Alexa-Fluor 488 conjugated goat anti-rabbit polyclonal used at a 1/100 dilution.

Red: cadherin

Blue: DAPI

Green: anti-Staphylococcus aureus (ab20920)

**Please note:** All products are "FOR RESEARCH USE ONLY. NOT FOR USE IN DIAGNOSTIC PROCEDURES"

### Our Abpromise to you: Quality guaranteed and expert technical support

- Replacement or refund for products not performing as stated on the datasheet
- Valid for 12 months from date of delivery
- Response to your inquiry within 24 hours
- We provide support in Chinese, English, French, German, Japanese and Spanish
- Extensive multi-media technical resources to help you
- We investigate all quality concerns to ensure our products perform to the highest standards

If the product does not perform as described on this datasheet, we will offer a refund or replacement. For full details of the Abpromise, please visit <https://www.abcam.co.jp/abpromise> or contact our technical team.

### Terms and conditions

- Guarantee only valid for products bought direct from Abcam or one of our authorized distributors