


Anti-SSRP1 antibody ab21584

★★★★☆ [2 Abreviews](#) [4 References](#) [画像数 2](#)

製品の概要

製品名	Anti-SSRP1 antibody
製品の詳細	Rabbit polyclonal to SSRP1
由来種	Rabbit
アプリケーション	適用あり: ICC/IF, WB
種交差性	交差種: Human 交差が予測される動物種: Mouse, Rat, Dog 
免疫原	Synthetic peptide conjugated to KLH derived from within residues 600 to the C-terminus of Human SSRP1. Immunogen の所有権に関して (Peptide available as ab22404 .)
ポジティブ・コントロール	This antibody gave a positive signal for Western Blot in U2OS whole cell lysate. This antibody gave a positive signal for Immunofluorescence in HEK293; HeLa; HepG2; MCF7.
特記事項	<p>The Life Science industry has been in the grips of a reproducibility crisis for a number of years. Abcam is leading the way in addressing this with our range of recombinant monoclonal antibodies and knockout edited cell lines for gold-standard validation. Please check that this product meets your needs before purchasing.</p> <p>If you have any questions, special requirements or concerns, please send us an inquiry and/or contact our Support team ahead of purchase. Recommended alternatives for this product can be found below, along with publications, customer reviews and Q&As</p>

製品の特性

製品の状態	Liquid
保存方法	Shipped at 4°C. Store at +4°C short term (1-2 weeks). Upon delivery aliquot. Store at -20°C or -80°C. Avoid freeze / thaw cycle.
バッファー	pH: 7.40 Preservative: 0.02% Sodium azide Constituent: PBS
精製度	Batches of this product that have a concentration < 1mg/ml may have BSA added as a stabilising agent. If you would like information about the formulation of a specific lot, please contact our scientific support team who will be happy to help. Immunogen affinity purified

ポリモノ
アイソタイプ

ポリクローナル
IgG

アプリケーション

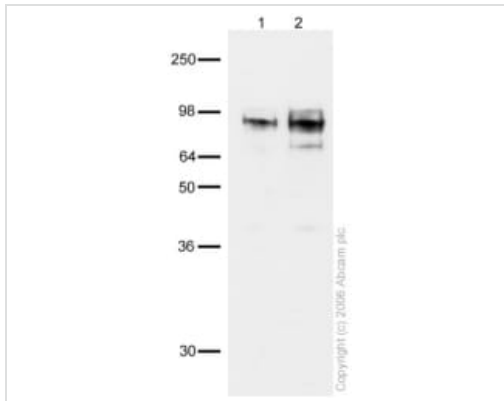
The Abpromise guarantee **Abpromise保証は、次のテスト済みアプリケーションにおけるab21584の使用に適用されます**
アプリケーションノートには、推奨の開始希釈率がありますが、適切な希釈率につきましてはご検討ください。

アプリケーション	Abreviews	特記事項
ICC/IF	★★★★☆ (1)	Use a concentration of 5 µg/ml.
WB	★★★★☆ (1)	1/500 - 1/1000. Detects a band of approximately 90 kDa (predicted molecular weight: 81 kDa).

ターゲット情報

機能	Component of the FACT complex, a general chromatin factor that acts to reorganize nucleosomes. The FACT complex is involved in multiple processes that require DNA as a template such as mRNA elongation, DNA replication and DNA repair. During transcription elongation the FACT complex acts as a histone chaperone that both destabilizes and restores nucleosomal structure. It facilitates the passage of RNA polymerase II and transcription by promoting the dissociation of one histone H2A-H2B dimer from the nucleosome, then subsequently promotes the reestablishment of the nucleosome following the passage of RNA polymerase II. The FACT complex is probably also involved in phosphorylation of 'Ser-392' of p53/TP53 via its association with CK2 (casein kinase II). Binds specifically to double-stranded DNA and at low levels to DNA modified by the antitumor agent cisplatin. May potentiate cisplatin-induced cell death by blocking replication and repair of modified DNA. Also acts as a transcriptional coactivator for p63/TP63.
配列類似性	Belongs to the SSRP1 family. Contains 1 HMG box DNA-binding domain.
ドメイン	The HMG box DNA-binding domain mediates DNA-binding. It has both affinity and specificity for DNA damaged globally with cisplatin.
翻訳後修飾	Phosphorylated by CK2 following UV but not gamma irradiation. Phosphorylation inhibits its DNA-binding activity. Ubiquitinated. Polyubiquitinated following caspase cleavage resulting in degradation of the N-terminal ubiquitinated part of the cleaved protein. Sumoylated.
細胞内局在	Nucleus. Chromosome. Colocalizes with RNA polymerase II on chromatin. Recruited to actively transcribed loci.

画像



Western blot - Anti-SSRP1 antibody (ab21584)

All lanes : Anti-SSRP1 antibody (ab21584) at 1/500 dilution

Lane 1 : U2OS cell lysate

Lane 2 : U2OS cell lysate treated with ionizing radiation

Developed using the ECL technique.

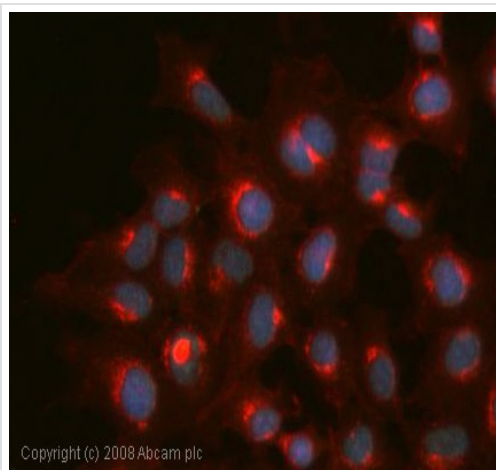
Performed under reducing conditions.

Predicted band size: 81 kDa

Observed band size: 90 kDa

Additional bands at: 70 kDa (possible cleavage fragment), 70 kDa (possible cross reactivity)

From a 60 mm dish, cells were scraped into 75 ul of 2X laemmli buffer and 20ul was loaded onto the SDS-PAGE gel. ab21584 recognizes a protein at approximately 90 kDa which corresponds closely to the size of SSRP1.



Immunocytochemistry/ Immunofluorescence - Anti-SSRP1 antibody (ab21584)

ICC/IF image of ab21584 stained human HEK 293 cells. The cells were methanol fixed (5 min), permeabilised in 0.1% PBS-Tween (20 min) and incubated with the antibody (ab21584, 5µg/ml) for 1h at room temperature. 1%BSA / 10% normal goat serum / 0.3M glycine was used to block non-specific protein-protein interactions. The secondary antibody (green) was Alexa Fluor® 488 goat anti-rabbit IgG (H+L) used at a 1/1000 dilution for 1h. Alexa Fluor® 594 WGA was used to label plasma membranes (red). DAPI was used to stain the cell nuclei (blue). This antibody also gave a positive IF result in HeLa, HepG2 and MCF7 cells.

Please note: All products are "FOR RESEARCH USE ONLY. NOT FOR USE IN DIAGNOSTIC PROCEDURES"

Our Promise to you: Quality guaranteed and expert technical support

- Replacement or refund for products not performing as stated on the datasheet

- Valid for 12 months from date of delivery
- Response to your inquiry within 24 hours

- We provide support in Chinese, English, French, German, Japanese and Spanish
- Extensive multi-media technical resources to help you
- We investigate all quality concerns to ensure our products perform to the highest standards

If the product does not perform as described on this datasheet, we will offer a refund or replacement. For full details of the Abpromise, please visit <https://www.abcam.co.jp/abpromise> or contact our technical team.

Terms and conditions

- Guarantee only valid for products bought direct from Abcam or one of our authorized distributors