


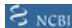


# Anti-SSR3 antibody ab121458

**1 References** [画像数 8](#)

### 製品の概要

|              |   |
|--------------|---|
| 製品名          | Anti-SSR3 antibody  |
| 製品の詳細        | Rabbit polyclonal to SSR3   |
| 由来種          | Rabbit  |
| アプリケーション     | <b>適用あり:</b> WB, IHC-P  |
| 種交差性         | <b>交差種:</b> Mouse, Rat, Human   |
| 免疫原          | antigen sequence, corresponding to amino acids 83-133 (VLKHKVAQKR EDAVSKEVTR KLSEADNRKM SRKEKDERIL WKKNEVADYE A) of Human SSR3.<br> <b>Run BLAST with</b>   <b>Run BLAST with</b>   |
| ポジティブ・コントロール | IHC-P: Human colon and cerebral cortex tissues. Mouse brain and choroid plexus tissues. WB: RPMI-8226, NIH/3T3, and NBT-II cell lysates, Human cerebral cortex and mouse cerebellum tissue lysates.   |
| 特記事項         | <p>The Life Science industry has been in the grips of a reproducibility crisis for a number of years. Abcam is leading the way in addressing this with our range of recombinant monoclonal antibodies and knockout edited cell lines for gold-standard validation. Please check that this product meets your needs before purchasing.</p> <p>If you have any questions, special requirements or concerns, please send us an inquiry and/or contact our Support team ahead of purchase. Recommended alternatives for this product can be found below, along with publications, customer reviews and Q&amp;As</p> |

### 製品の特性

|        |   |
|--------|---|
| 製品の状態  | Liquid  |
| 保存方法   | Shipped at 4°C. Upon delivery aliquot and store at -20°C. Avoid repeated freeze / thaw cycles.            |
| バッファー  | pH: 7.20<br>Preservative: 0.02% Sodium azide<br>Constituents: 59% PBS, 40% Glycerol (glycerin, glycerine) |
| 精製度    | Immunogen affinity purified   |
| ポリ/モノ  | ポリクローナル   |
| アイソタイプ | IgG   |

## アプリケーション

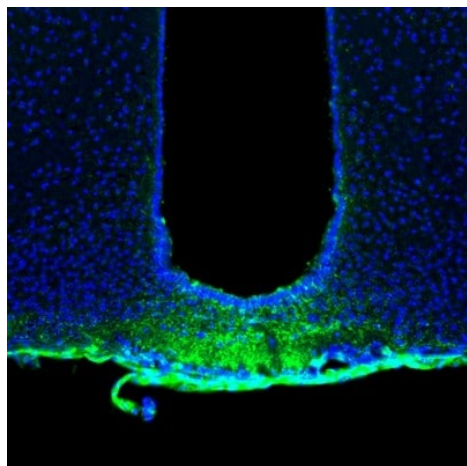
**The Abpromise guarantee** Abpromise保証は、 次のテスト済みアプリケーションにおけるab121458の使用に適用されます  
アプリケーションノートには、推奨の開始希釈率がありますが、適切な希釈率につきましてはご確認ください。

| アプリケーション | Abreviews | 特記事項  |
|----------|-----------|---|
| WB       |           | Use a concentration of 0.04 - 0.4 µg/ml.  |
| IHC-P    |           | 1/200 - 1/500. Perform heat mediated antigen retrieval with citrate buffer pH 6 before commencing with IHC staining protocol. |

## ターゲット情報

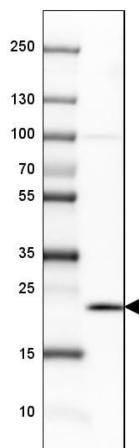
|       |  |
|-------|--|
| 機能    | TRAP proteins are part of a complex whose function is to bind calcium to the ER membrane and thereby regulate the retention of ER resident proteins. |
| 配列類似性 | Belongs to the TRAP-gamma family.  |
| 細胞内局在 | Endoplasmic reticulum membrane.  |

## 画像



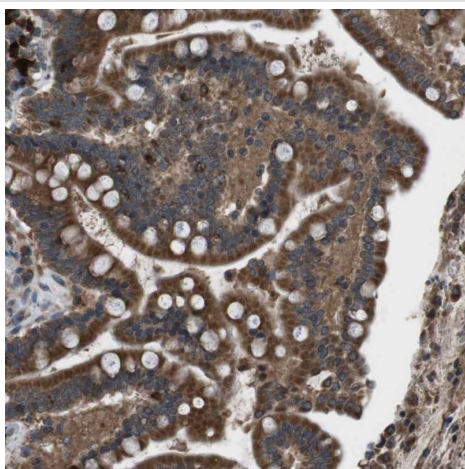
Immunohistochemistry (Formalin/PFA-fixed paraffin-embedded sections) analysis of mouse brain tissue labelling SSR3 with ab121458 at 1/200 dilution. Heat mediated antigen retrieval performed with citrate buffer pH 6 before commencing with IHC staining protocol.

Immunohistochemistry (Formalin/PFA-fixed paraffin-embedded sections) - Anti-SSR3 antibody (ab121458)



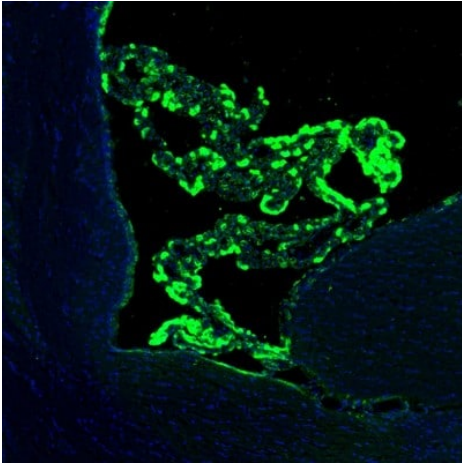
Western blot - Anti-SSR3 antibody (ab121458)

Anti-SSR3 antibody (ab121458) at 0.4 µg/ml + Human cerebral cortex tissue lysate



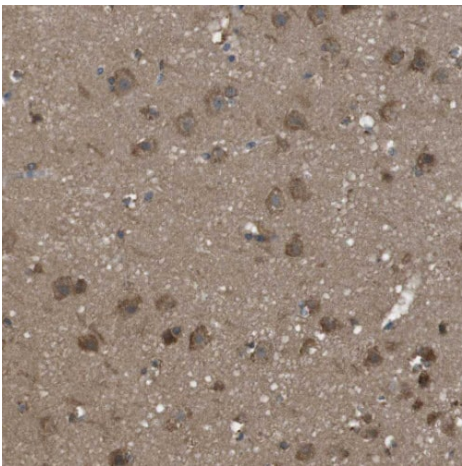
Immunohistochemistry (Formalin/PFA-fixed paraffin-embedded sections) - Anti-SSR3 antibody (ab121458)

Immunohistochemistry (Formalin/PFA-fixed paraffin-embedded sections) analysis of human colon tissue labelling SSR3 with ab121458 at 1/200 dilution. Heat mediated antigen retrieval performed with citrate buffer pH 6 before commencing with IHC staining protocol.



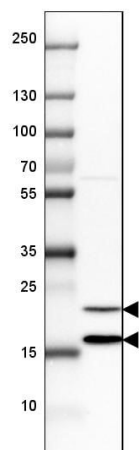
Immunohistochemistry (Formalin/PFA-fixed paraffin-embedded sections) - Anti-SSR3 antibody (ab121458)

Immunohistochemistry (Formalin/PFA-fixed paraffin-embedded sections) analysis of mouse choroid plexus tissue labelling SSR3 with ab121458 at 1/200 dilution. Heat mediated antigen retrieval performed with citrate buffer pH 6 before commencing with IHC staining protocol.



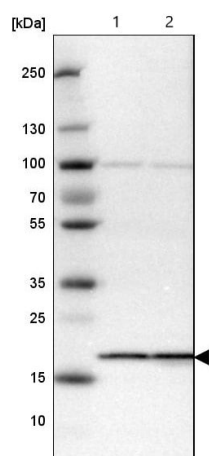
Immunohistochemistry (Formalin/PFA-fixed paraffin-embedded sections) - Anti-SSR3 antibody (ab121458)

Immunohistochemistry (Formalin/PFA-fixed paraffin-embedded sections) analysis of human cerebral cortex tissue labelling SSR3 with ab121458 at 1/200 dilution. Heat mediated antigen retrieval performed with citrate buffer pH 6 before commencing with IHC staining protocol.



Anti-SSR3 antibody (ab121458) at 0.4 µg/ml + Mouse cerebellum tissue lysate

Western blot - Anti-SSR3 antibody (ab121458)

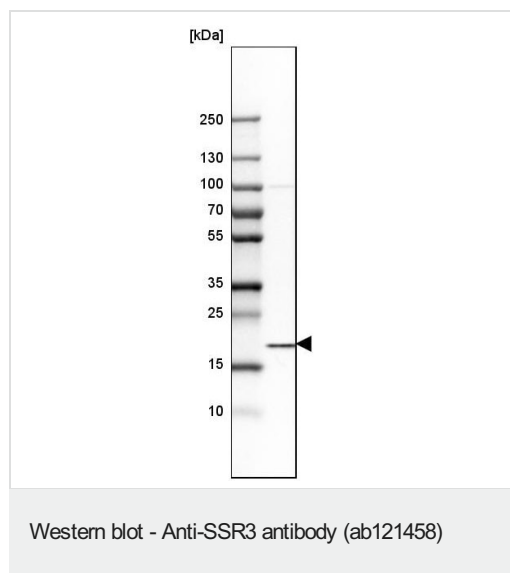


**All lanes :** Anti-SSR3 antibody (ab121458) at 0.4 µg/ml

**Lane 1 :** NIH/3T3 (mouse embryo fibroblast cell line) cell lysate

**Lane 2 :** NBT-II (rat urinary bladder tumor cell line) cell lysate

Western blot - Anti-SSR3 antibody (ab121458)



Anti-SSR3 antibody (ab121458) at 0.4 µg/ml + RPMI-8226 (human lymphoblast cell line) cell lysate

**Please note:** All products are "FOR RESEARCH USE ONLY. NOT FOR USE IN DIAGNOSTIC PROCEDURES"

### Our Abpromise to you: Quality guaranteed and expert technical support

---

- Replacement or refund for products not performing as stated on the datasheet
- Valid for 12 months from date of delivery
- Response to your inquiry within 24 hours
- We provide support in Chinese, English, French, German, Japanese and Spanish
- Extensive multi-media technical resources to help you
- We investigate all quality concerns to ensure our products perform to the highest standards

If the product does not perform as described on this datasheet, we will offer a refund or replacement. For full details of the Abpromise, please visit <https://www.abcam.co.jp/abpromise> or contact our technical team.

### Terms and conditions

---

- Guarantee only valid for products bought direct from Abcam or one of our authorized distributors