


# Anti-SSBP1 antibody ab224053

**1 References** [画像数 6](#)

### 製品の概要

---

製品名	Anti-SSBP1 antibody
製品の詳細	Rabbit polyclonal to SSBP1
由来種	Rabbit
アプリケーション	<b>適用あり:</b> IHC-P, ICC/IF, WB
種交差性	<b>交差種:</b> Mouse, Rat, Human <b>交差が予測される動物種:</b> Rabbit, Orangutan 
免疫原	Recombinant fragment corresponding to Human SSBP1 aa 1 to the C-terminus. Database link: <a href="#">Q04837</a> <a href="#">Run BLAST with</a> <a href="#">Run BLAST with</a>
ポジティブ・コントロール	IHC: Human duodenum, testis, cerebral cortex and pancreas tissue. WB: HEK-293, NIH/3T3 and NBT-II cell lysate. ICC/IF: A431 cell lysate.
特記事項	<p>The Life Science industry has been in the grips of a reproducibility crisis for a number of years. Abcam is leading the way in addressing this with our range of recombinant monoclonal antibodies and knockout edited cell lines for gold-standard validation. Please check that this product meets your needs before purchasing.</p> <p>If you have any questions, special requirements or concerns, please send us an inquiry and/or contact our Support team ahead of purchase. Recommended alternatives for this product can be found below, along with publications, customer reviews and Q&amp;As</p>

### 製品の特性

---

製品の状態	Liquid
保存方法	Shipped at 4°C. Store at +4°C short term (1-2 weeks). Upon delivery aliquot. Store at -20°C long term. Avoid freeze / thaw cycle.
バッファー	pH: 7.20 Preservative: 0.02% Sodium azide Constituents: 40% Glycerol (glycerin, glycerine), PBS
精製度	Immunogen affinity purified
ポリ/モノ	ポリクローナル
アイソタイプ	IgG

## アプリケーション

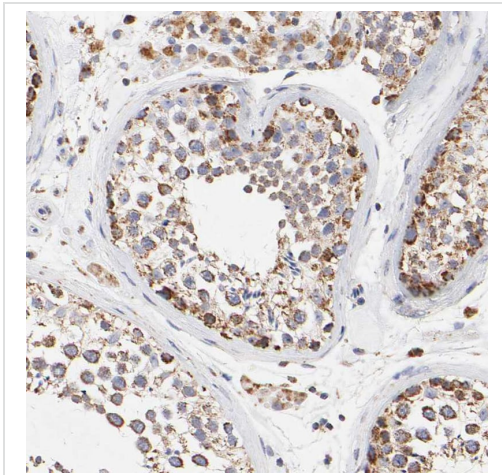
**The Abpromise guarantee**      **Abpromise保証は、** 次のテスト済みアプリケーションにおけるab224053の使用に適用されます  
アプリケーションノートには、推奨の開始希釈率がありますが、適切な希釈率につきましてはご検討ください。

アプリケーション	Abreviews	特記事項
IHC-P		1/200 - 1/500. Perform heat mediated antigen retrieval with citrate buffer pH 6 before commencing with IHC staining protocol.
ICC/IF		Use a concentration of 0.25 - 2 µg/ml. Fixation/Permeabilization: PFA/Triton X-100.
WB		Use a concentration of 0.04 - 0.4 µg/ml. Predicted molecular weight: 17 kDa.

## ターゲット情報

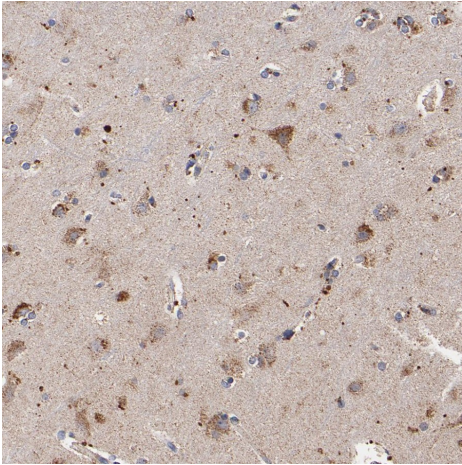
機能	This protein binds preferentially and cooperatively to ss-DNA. Probably involved in mitochondrial DNA replication.
配列類似性	Contains 1 SSB domain.
翻訳後修飾	Phosphorylated upon DNA damage, probably by ATM or ATR.
細胞内局在	Mitochondrion.

## 画像



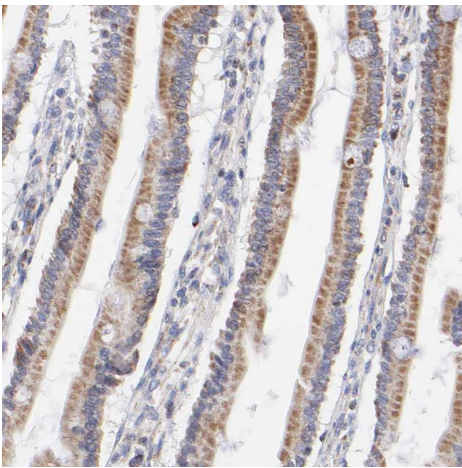
Immunohistochemical analysis of Formalin/PFA-fixed paraffin-embedded human testis sections labeling SSBP1 with ab224053 at 1/200. Antigen retrieval was heat mediated with citrate buffer pH 6 before commencing with IHC staining protocol.

Immunohistochemistry (Formalin/PFA-fixed paraffin-embedded sections) - Anti-SSBP1 antibody (ab224053)



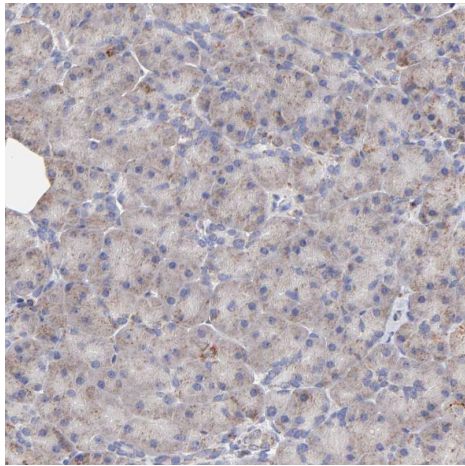
Immunohistochemistry (Formalin/PFA-fixed paraffin-embedded sections) - Anti-SSBP1 antibody (ab224053)

Immunohistochemical analysis of Formalin/PFA-fixed paraffin-embedded human cerebral cortex sections labeling SSBP1 with ab224053 at 1/200. Antigen retrieval was heat mediated with citrate buffer pH 6 before commencing with IHC staining protocol.



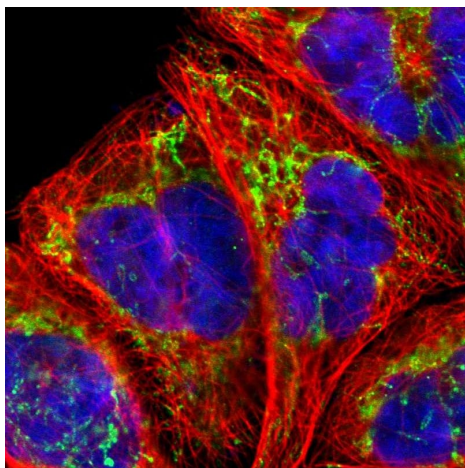
Immunohistochemistry (Formalin/PFA-fixed paraffin-embedded sections) - Anti-SSBP1 antibody (ab224053)

Immunohistochemical analysis of Formalin/PFA-fixed paraffin-embedded human duodenum sections labeling SSBP1 with ab224053 at 1/200. Antigen retrieval was heat mediated with citrate buffer pH 6 before commencing with IHC staining protocol.



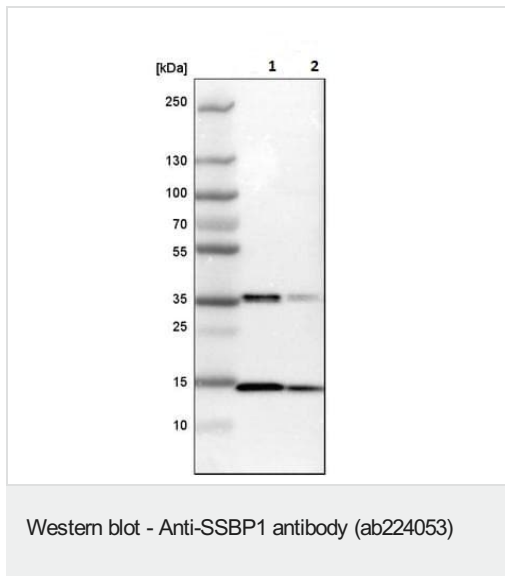
Immunohistochemical analysis of Formalin/PFA-fixed paraffin-embedded human pancreas sections labeling SSBP1 with ab224053 at 1/200. Antigen retrieval was heat mediated with citrate buffer pH 6 before commencing with IHC staining protocol.

Immunohistochemistry (Formalin/PFA-fixed paraffin-embedded sections) - Anti-SSBP1 antibody (ab224053)



PFA-fixed, Triton X-100 permeabilized A431 (human epidermoid carcinoma cell line) cells stained for SSBP1 (green) using ab224053 at 4 µg/ml in ICC/IF.

Immunocytochemistry/ Immunofluorescence - Anti-SSBP1 antibody (ab224053)



**All lanes :** Anti-SSBP1 antibody (ab224053) at 1/100 dilution

**Lane 1 :** NIH/3T3 (mouse embryo fibroblast cell line) cell lysate

**Lane 2 :** NBT-II cell lysate

**Predicted band size:** 17 kDa

**Please note:** All products are "FOR RESEARCH USE ONLY. NOT FOR USE IN DIAGNOSTIC PROCEDURES"

### Our Abpromise to you: Quality guaranteed and expert technical support

---

- Replacement or refund for products not performing as stated on the datasheet
- Valid for 12 months from date of delivery
- Response to your inquiry within 24 hours
- We provide support in Chinese, English, French, German, Japanese and Spanish
- Extensive multi-media technical resources to help you
- We investigate all quality concerns to ensure our products perform to the highest standards

If the product does not perform as described on this datasheet, we will offer a refund or replacement. For full details of the Abpromise, please visit <https://www.abcam.co.jp/abpromise> or contact our technical team.

### Terms and conditions

---

- Guarantee only valid for products bought direct from Abcam or one of our authorized distributors