


Anti-SRXN1 antibody ab92298

★★★★☆ **4 Abreviews** **3 References** 画像数 **1**

製品の概要

製品名	Anti-SRXN1 antibody
製品の詳細	Goat polyclonal to SRXN1
由来種	Goat
アプリケーション	適用あり: WB
種交差性	交差種: Human 交差が予測される動物種: Rat 
免疫原	Synthetic peptide. This information is proprietary to Abcam and/or its suppliers.
ポジティブ・コントロール	Human colon and kidney lysates
特記事項	<p>The Life Science industry has been in the grips of a reproducibility crisis for a number of years. Abcam is leading the way in addressing this with our range of recombinant monoclonal antibodies and knockout edited cell lines for gold-standard validation. Please check that this product meets your needs before purchasing.</p> <p>If you have any questions, special requirements or concerns, please send us an inquiry and/or contact our Support team ahead of purchase. Recommended alternatives for this product can be found below, along with publications, customer reviews and Q&As</p>

製品の特性

製品の状態	Liquid
保存方法	Shipped at 4°C. Upon delivery aliquot and store at -20°C. Avoid repeated freeze / thaw cycles.
バッファー	<p>pH: 7.30</p> <p>Preservative: 0.02% Sodium azide</p> <p>Constituents: Tris buffered saline, 0.5% BSA</p>
精製度	Immunogen affinity purified
特記事項(精製)	ab92298 is purified from goat serum by ammonium sulphate precipitation followed by antigen affinity chromatography using the immunizing peptide.
ポリ/モノ	ポリクローナル
アイソタイプ	IgG

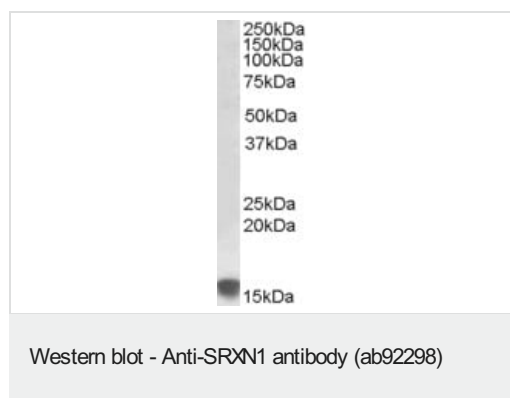
The Abpromise guarantee Abpromise保証は、 次のテスト済みアプリケーションにおけるab92298の使用に適用されます
アプリケーションノートには、推奨の開始希釈率がありますが、適切な希釈率につきましてはご検討ください。

アプリケーション	Abreviews	特記事項
WB	★★★★☆ (4)	Use a concentration of 0.5 - 1.5 µg/ml. Detects a band of approximately 16 kDa (predicted molecular weight: 14 kDa). 1 hour primary incubation is recommended for this product.

ターゲット情報

関連性	SRXN1 contributes to oxidative stress resistance by reducing cysteine-sulfinic acid formed under exposure to oxidants in the peroxiredoxins PRDX1, PRDX2, PRDX3 and PRDX4. It does not act on PRDX5 or PRDX6. SRXN1 may catalyze the reduction in a multi-step process by acting both as a specific phosphotransferase and a thioltransferase.
細胞内局在	Cytoplasmic

画像



Anti-SRXN1 antibody (ab92298) at 0.5 µg/ml + Human Kidney lysate (in RIPA buffer) at 35 µg

Developed using the ECL technique.

Predicted band size: 14 kDa

Observed band size: 16 kDa

Primary incubation was 1 hour.

Please note: All products are "FOR RESEARCH USE ONLY. NOT FOR USE IN DIAGNOSTIC PROCEDURES"

Our Abpromise to you: Quality guaranteed and expert technical support

- Replacement or refund for products not performing as stated on the datasheet
- Valid for 12 months from date of delivery
- Response to your inquiry within 24 hours
- We provide support in Chinese, English, French, German, Japanese and Spanish
- Extensive multi-media technical resources to help you
- We investigate all quality concerns to ensure our products perform to the highest standards

If the product does not perform as described on this datasheet, we will offer a refund or replacement. For full details of the Abpromise, please visit <https://www.abcam.co.jp/abpromise> or contact our technical team.

Terms and conditions

- Guarantee only valid for products bought direct from Abcam or one of our authorized distributors