

Anti-SRSF3 antibody ab73891

★★★★★ [5 Abreviews](#) [9 References](#) [画像数 2](#)

製品の概要

製品名	Anti-SRSF3 antibody
製品の詳細	Rabbit polyclonal to SRSF3
由来種	Rabbit
アプリケーション	適用あり: WB, ICC/IF
種交差性	交差種: Human
免疫原	Synthetic peptide corresponding to Human SRSF3 (internal sequence).
特記事項	<p>The Life Science industry has been in the grips of a reproducibility crisis for a number of years. Abcam is leading the way in addressing this with our range of recombinant monoclonal antibodies and knockout edited cell lines for gold-standard validation. Please check that this product meets your needs before purchasing.</p> <p>If you have any questions, special requirements or concerns, please send us an inquiry and/or contact our Support team ahead of purchase. Recommended alternatives for this product can be found below, along with publications, customer reviews and Q&As</p>

製品の特性

製品の状態	Liquid
保存方法	Shipped at 4°C. Upon delivery aliquot and store at -20°C. Avoid repeated freeze / thaw cycles.
バッファー	pH: 7 Preservative: 0.02% Sodium azide Constituents: 50% Glycerol (glycerin, glycerine), 0.87% Sodium chloride, PBS
精製度	Without Mg ²⁺ and Ca ²⁺ Immunogen affinity purified
ポリ/モノ	ポリクローナル
アイソタイプ	IgG

アプリケーション

The Abpromise guarantee

Abpromise保証は、次のテスト済みアプリケーションにおけるab73891の使用に適用されます

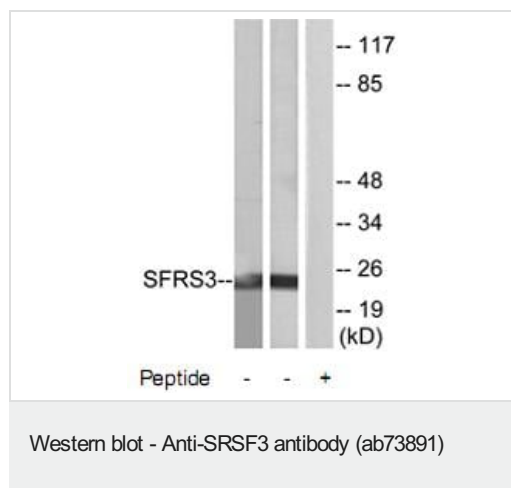
アプリケーションノートには、推奨の開始希釈率がありますが、適切な希釈率につきましてはご確認ください。

アプリケーション	Abreviews	特記事項
WB	★★★★★ (4)	1/500 - 1/1000. Predicted molecular weight: 19 kDa.
ICC/IF		1/500 - 1/1000.

ターゲット情報

機能	May be involved in RNA processing in relation with cellular proliferation and/or maturation.
配列類似性	Belongs to the splicing factor SR family. Contains 1 RRM (RNA recognition motif) domain.
翻訳後修飾	Extensively phosphorylated on serine residues in the RS domain.
細胞内局在	Nucleus.

画像



All lanes : Anti-SRSF3 antibody (ab73891) at 1/500 dilution

Lane 1 : extracts from HeLa cells

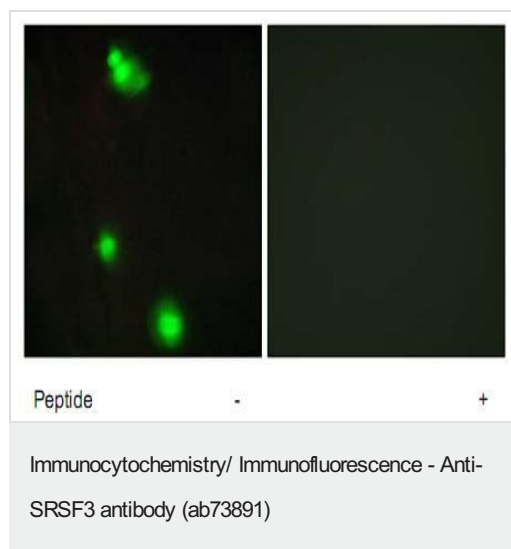
Lane 2 : extracts from Jurkat cells

Lane 3 : extracts from Jurkat cells with immunizing peptide at 10 µg

Lysates/proteins at 30 µg per lane.

Predicted band size: 19 kDa

Observed band size: 19 kDa



Left panel: immunofluorescence analysis of MCF7 cells, using 1/500-1/1000 ab73891; Right panel: same, after pre-incubation with the immunizing peptide.

Please note: All products are "FOR RESEARCH USE ONLY. NOT FOR USE IN DIAGNOSTIC PROCEDURES"

Our Abpromise to you: Quality guaranteed and expert technical support

- Replacement or refund for products not performing as stated on the datasheet
- Valid for 12 months from date of delivery
- Response to your inquiry within 24 hours

- We provide support in Chinese, English, French, German, Japanese and Spanish
- Extensive multi-media technical resources to help you
- We investigate all quality concerns to ensure our products perform to the highest standards

If the product does not perform as described on this datasheet, we will offer a refund or replacement. For full details of the Abpromise, please visit <https://www.abcam.co.jp/abpromise> or contact our technical team.

Terms and conditions

- Guarantee only valid for products bought direct from Abcam or one of our authorized distributors