


Anti-SRPK1 antibody ab90527

★★★★★ **1 Abreviews** **5 References** 画像数 3

製品の概要

製品名	Anti-SRPK1 antibody
製品の詳細	Rabbit polyclonal to SRPK1
由来種	Rabbit
アプリケーション	適用あり: ICC/IF, WB, IP, IHC-P
種交差性	交差種: Mouse, Human 交差が予測される動物種: Rat, Rabbit, Horse, Guinea pig, Dog, Pig, Ferret, Rhesus monkey, Gorilla, Orangutan, Elephant 
免疫原	Synthetic peptide within Human SRPK1 aa 275-325 (internal sequence). The exact sequence is proprietary. (GeneID 6732) Database link: NP_003128.3
特記事項	<p>The Life Science industry has been in the grips of a reproducibility crisis for a number of years. Abcam is leading the way in addressing this with our range of recombinant monoclonal antibodies and knockout edited cell lines for gold-standard validation. Please check that this product meets your needs before purchasing.</p> <p>If you have any questions, special requirements or concerns, please send us an inquiry and/or contact our Support team ahead of purchase. Recommended alternatives for this product can be found below, along with publications, customer reviews and Q&As</p>

製品の特性

製品の状態	Liquid
保存方法	Shipped at 4°C. Upon delivery aliquot and store at -20°C. Avoid freeze / thaw cycles.
バッファー	pH: 6.8 Preservative: 0.09% Sodium azide Constituents: Tris buffered saline, 0.1% BSA
精製度	Immunogen affinity purified
ポリ/モノ	ポリクローナル
アイソタイプ	IgG

アプリケーション

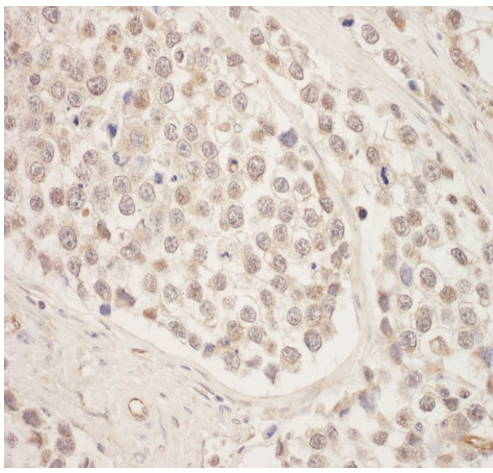
The Abpromise guarantee **Abpromise保証は、次のテスト済みアプリケーションにおけるab90527の使用に適用されます**
 アプリケーションノートには、推奨の開始希釈率がありますが、適切な希釈率につきましてはご検討ください。

アプリケーション	Abreviews	特記事項
ICC/IF		Use at an assay dependent concentration.
WB	★★★★★ (1)	1/2000 - 1/10000. Predicted molecular weight: 92 kDa.
IP		Use at 2-5 µg/mg of lysate.
IHC-P		1/100 - 1/500. Perform heat mediated antigen retrieval with citrate buffer pH 6 before commencing with IHC staining protocol.

ターゲット情報

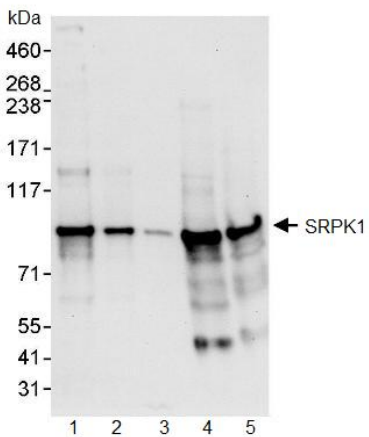
機能	Plays a central role in the regulatory network for splicing, controlling the intranuclear distribution of splicing factors in interphase cells and the reorganization of nuclear speckles during mitosis. Hyperphosphorylates RS domain-containing proteins such as SFRS1, SFRS2 and ZRSR2 on serine residues during metaphase but at lower levels during interphase. Locks onto SFRS1 to form a stable complex and processively phosphorylates the RS domain. Appears to mediate HBV core protein phosphorylation which is a prerequisite for pregenomic RNA encapsidation into viral capsids.
組織特異性	Isoform 2 is predominantly expressed in the testis but is also present at lower levels in heart, ovary, small intestine, liver, kidney, pancreas and skeletal muscle. Isoform 1 is only seen in the testis, at lower levels than isoform 2.
配列類似性	Belongs to the protein kinase superfamily. CMGC Ser/Thr protein kinase family. Contains 1 protein kinase domain.
細胞内局在	Cytoplasm. Nucleus.

画像



Immunohistochemistry (Formalin/PFA-fixed paraffin-embedded sections) - Anti-SRPK1 antibody (ab90527)

Immunohistochemistry (Formalin/PFA-fixed paraffin-embedded sections) analysis of human testicular seminoma tissue labelling SRPK1 with ab90527 at 1/200 (1µg/ml). Detection: DAB.



Western blot - Anti-SRPK1 antibody (ab90527)

All lanes : Anti-SRPK1 antibody (ab90527) at 0.04 µg/ml

Lane 1 : HeLa whole cell lysate at 50 µg

Lane 2 : HeLa whole cell lysate at 15 µg

Lane 3 : HeLa whole cell lysate at 5 µg

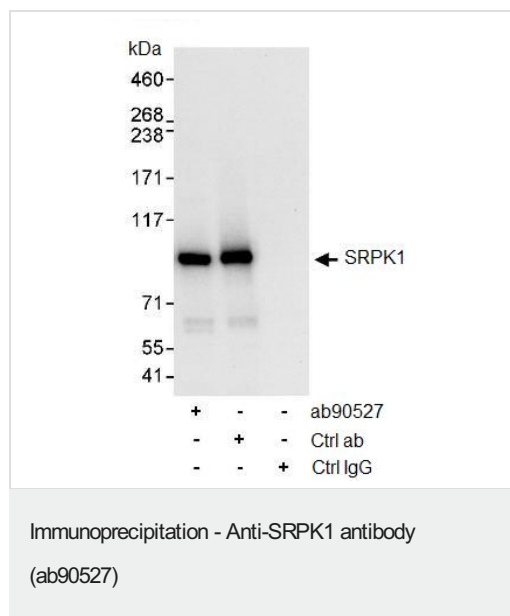
Lane 4 : Whole cell lysate from 293T cells at 50 µg

Lane 5 : Whole cell lysate from NIH 3T3 cells at 50 µg

Developed using the ECL technique.

Predicted band size: 92 kDa

Exposure time: 10 seconds



ab90527 at 1 µg/ml detecting SRPK1 following immunoprecipitation from HeLa cell lysate. Detection by ECL with a 3 second exposure.

Lane 1: HeLa cell lysate IP with ab90527

Lane 2: HeLa cell lysate IP with an antibody to a downstream epitope of SRPK1

Lane 3: HeLa cell lysate IP with control IgG

All antibodies used at at 3 µg/mg lysate for immunoprecipitation. 1 mg of lysate was used for IP and 20% of IP loaded.

Please note: All products are "FOR RESEARCH USE ONLY. NOT FOR USE IN DIAGNOSTIC PROCEDURES"

Our Abpromise to you: Quality guaranteed and expert technical support

- Replacement or refund for products not performing as stated on the datasheet
- Valid for 12 months from date of delivery
- Response to your inquiry within 24 hours
- We provide support in Chinese, English, French, German, Japanese and Spanish
- Extensive multi-media technical resources to help you
- We investigate all quality concerns to ensure our products perform to the highest standards

If the product does not perform as described on this datasheet, we will offer a refund or replacement. For full details of the Abpromise, please visit <https://www.abcam.co.jp/abpromise> or contact our technical team.

Terms and conditions

- Guarantee only valid for products bought direct from Abcam or one of our authorized distributors