

Anti-SRGAP1 antibody ab75281

★★★★☆ **2 Abreviews** [画像数 1](#)

製品の概要

製品名	Anti-SRGAP1 antibody
製品の詳細	Rabbit polyclonal to SRGAP1
由来種	Rabbit
アプリケーション	適用あり: IP
種交差性	交差種: Human 交差が予測される動物種: Cow, Pig, Rhesus monkey, Gorilla, Orangutan 
免疫原	Synthetic peptide corresponding to a region between residue 825 and 875 of human SRGAP1 (NP_065813.1)
ポジティブ・コントロール	HeLa whole cell lysate.
特記事項	<p>The Life Science industry has been in the grips of a reproducibility crisis for a number of years. Abcam is leading the way in addressing this with our range of recombinant monoclonal antibodies and knockout edited cell lines for gold-standard validation. Please check that this product meets your needs before purchasing.</p> <p>If you have any questions, special requirements or concerns, please send us an inquiry and/or contact our Support team ahead of purchase. Recommended alternatives for this product can be found below, along with publications, customer reviews and Q&As</p>

製品の特性

製品の状態	Liquid
保存方法	Shipped at 4°C. Upon delivery aliquot and store at -20°C. Avoid freeze / thaw cycles.
バッファー	pH: 7 Preservative: 0.09% Sodium azide Constituents: 1.815% Tris, 1.764% Sodium citrate, 0.021% PBS
精製度	Immunogen affinity purified
特記事項 (精製)	ab75281 was affinity purified using an epitope specific to SRGAP1 immobilized on solid support.
ポリ/モノ	ポリクローナル
アイソタイプ	IgG

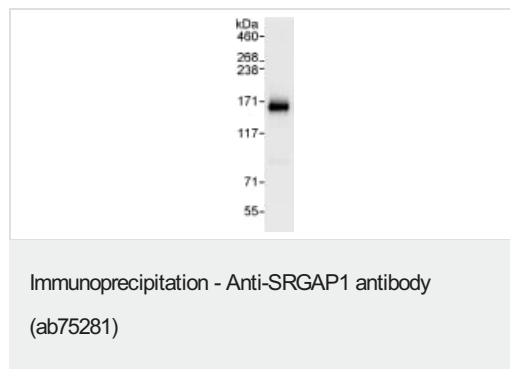
The Abpromise guarantee Abpromise保証は、 次のテスト済みアプリケーションにおけるab75281の使用に適用されます
アプリケーションノートには、推奨の開始希釈率がありますが、適切な希釈率につきましてはご検討ください。

アプリケーション	Abreviews	特記事項
IP		Use at 2-5 µg/mg of lysate.

ターゲット情報

機能	GTPase-activating protein for RhoA and Cdc42 small GTPases. Together with CDC42 seems to be involved in the pathway mediating the repulsive signaling of Robo and Slit proteins in neuronal migration. SLIT2, probably through interaction with ROBO1, increases the interaction of SRGAP1 with ROBO1 and inactivates CDC42.
組織特異性	Expressed in brain, lung, kidney, and testis.
配列類似性	Contains 1 FCH domain. Contains 1 Rho-GAP domain. Contains 1 SH3 domain.
ドメイン	The F-BAR domain mediates oligomerization, binds membranes, and constrains plasma membrane protrusions.

画像



Detection of SRGAP1 by Western Blot of Immunoprecipitate.
anti-SRGAP1 at 1µg/ml staining SRGAP1 in HeLa whole cell lysate immunoprecipitated using ab75281 at 3µg/mg lysate (1 mg/IP; 20% of IP loaded/lane).
Detection: Chemiluminescence with exposure time of 1 second.

Please note: All products are "FOR RESEARCH USE ONLY. NOT FOR USE IN DIAGNOSTIC PROCEDURES"

Our Abpromise to you: Quality guaranteed and expert technical support

- Replacement or refund for products not performing as stated on the datasheet
- Valid for 12 months from date of delivery
- Response to your inquiry within 24 hours
- We provide support in Chinese, English, French, German, Japanese and Spanish
- Extensive multi-media technical resources to help you
- We investigate all quality concerns to ensure our products perform to the highest standards

If the product does not perform as described on this datasheet, we will offer a refund or replacement. For full details of the Abpromise, please visit <https://www.abcam.co.jp/abpromise> or contact our technical team.

Terms and conditions

- Guarantee only valid for products bought direct from Abcam or one of our authorized distributors